



Executive Board of the  
United Nations Development  
Programme and of the  
United Nations Population Fund

Dist.: General  
6 August 2001

Original English

Second regular session 2001  
10 to 14 September 2001, New York  
Item 2 of the provisional agenda  
UNDP

UNDP: FINANCIAL, BUDGETARY AND ADMINISTRATIVE MATTERS

Information on United Nations system regular and extrabudgetary  
technical cooperation expenditure, 2000

Addendum

STATISTICAL ANNEX

CONTENTS

	Page
ABBREVIATIONS .....	3
NOTE ON THE DATA .....	5

List of statistical tables

Table 1.	United Nations system: summary of technical cooperation expenditure by source of funding, 1999-2000 ..	10
Table 2.	United Nations system: summary of technical cooperation expenditure by sector, 1999-2000 ..	12
Table 3.	United Nations system: technical cooperation expenditure by category of expenditure, 2000 ..	13
Table 4.	Executing and specialized agencies: regular budget expenditure by country or area, 2000 ..	16
Table 5.	Executing and specialized agencies: extrabudgetary expenditure financed from non-United Nations system multilateral sources by country or area, 2000 ..	20
Table 6.	Executing and specialized agencies: extrabudgetary expenditure financed from bilateral sources but channelled through the United Nations system by country or area, 2000 ..	23



	<u>Page</u>
Table 7. United Nations system: technical cooperation expenditure originating from multilateral sources by country or area, 2000 .....	26
Table 8. United Nations system: a detailed view of total technical cooperation assistance delivered, 2000 .....	29
Table 9. Extrabudgetary contributions to agencies: bilateral and multilateral, excluding self-supporting, sources, 2000 .....	34
Table 10. Extrabudgetary contributions to agencies: unilateral self-supporting sources, 2000 .....	40
Table 11. WFP, UNICEF and UNFPA: contributions, 1996-2000 .....	42
Table 12. UNDP: geographical distribution of expenditure, 1996-2000 .....	50
Table 13. UNFPA: geographical distribution of expenditure, 1996-2000 .....	51
Table 14. UNICEF: geographical distribution of expenditure, 1996-2000 .....	52
Table 15. WFP: geographical distribution of expenditure, 1996-2000 .....	53
Table 16. United Nations system: nominal technical cooperation expenditure, 1980-2000 .....	54
Table 17. United Nations system: growth of nominal technical cooperation expenditure, 1981-2000 .....	55
Table 18. Executing and specialized agencies: technical cooperation expenditure funded from regular budgets, 1986-2000 .....	56
Table 19. Executing and specialized agencies: technical cooperation expenditure funded from extrabudgetary sources, 1986-2000 .....	57
Table 20. Executing and specialized agencies: extrabudgetary contributions for technical cooperation activities, 1980-2000 .....	58
Table 21. Executing and specialized agencies: growth of extrabudgetary contributions for technical cooperation activities, 1981-2000 .....	59
Table 22. Voluntary contributions received by UNDP, UNFPA, UNICEF and WFP, 1983-2000 .....	60

## A B B R E V I A T I O N S

ACC	Administrative Committee on Coordination
AfDB	African Development Bank
AFESD	Arab Fund for Economic and Social Development
AGFUND	Arab Gulf Fund for United Nations Development Organizations
AsDB	Asian Development Bank
DESA	Department of Economic and Social Affairs
DESIPA	Department for Economic and Social Information and Policy Analysis
DHA	Department of Humanitarian Affairs of the United Nations Secretariat
EBE	Extrabudgetary expenditures
ECA	Economic Commission for Africa
ECE	Economic Commission for Europe
ECLAC	Economic Commission for Latin America and the Caribbean
ESCAP	Economic and Social Commission for Asia and the Pacific
ESCWA	Economic and Social Commission for Western Africa
FAO	Food and Agriculture Organization of the United Nations
GCCC	Government cash counterpart contribution
GEF	Global Environment Facility
IAEA	International Atomic Energy Agency
IBRD	International Bank for Reconstruction and Development
ICAO	International Civil Aviation Organization
IDA	International Development Association
IFAD	International Fund for Agricultural Development
IFC	International Finance Corporation
ILO	International Labour Organization
IMF	International Monetary Fund
IMO	International Maritime Organization
IOM	International Organization for Migration
IPF	Indicative planning figure
ITC	International Trade Centre
ITU	International Telecommunication Union
MSA	Management service agreement
NFTCE	Non-UNDP-financed technical cooperation expenditures
NGO	Non-governmental organization
OCHA	Office for the Coordination of Humanitarian Affairs
ODA	Official Development Assistance
RBE	Regular budgetary expenditure
SIS	Special Industrial Services
SMF/LDC	Special Measures Fund for the Least Developed Countries
SPR	Special Programme Resources

## A B B R E V I A T I O N S (continued)

UNCDF	United Nations Capital Development Fund
UNCED	United Nations Conference on Environment and Development
UNCHS	United Nations Centre for Human Settlements (HABITAT)
UNCTAD	United Nations Conference on Trade and Development
UNDCP	United Nations International Drug Control Programme
UNDP	United Nations Development Programme
UNEP	United Nations Environment Programme
UNESCO	United Nations Educational, Scientific and Cultural Organization
UNFIP	United Nations Fund for International Partnerships
UNFPA	United Nations Population Fund
UNHCR	Office of the United Nations Commissioner for Refugees
UNICEF	United Nations Children's Fund
UNIDO	United Nations Industrial Development Organization
UNIFEM	United Nations Development Fund for Women
UNITAR	United Nations Institute for Training and Research
UNOG	United Nations Office at Geneva
UNRFNRE	United Nations Revolving Fund for Natural Resources Exploration
UNRWA	United Nations Relief Works Agency for Palestine Refugees in the Near East
UNSO	Office to Combat Desertification and Drought
UNTFAD	United Nations Trust Funds for African Development
UNU	United Nations University
UNV	United Nations Volunteers
UPU	United Nations Postal Union
WFP	World Food Programme
WHO	World Health Organization
WIPO	World Intellectual Property Organization
WMO	World Meteorological Organization
WTO	World Tourism Organization
WMU	World Maritime University

## NOTE ON THE DATA

### A. Mandate

1. By its decision 81/34 of 27 June 1981, the Governing Council requested the Administrator to continue to provide data on the magnitude and composition of technical cooperation activities (not all activities) funded by organizations of the United Nations system.

### B. Presentation of the data

2. The raw data submitted by agencies/organizations for 2000 have been checked for consistency and accuracy prior to processing and presentation in tables 1 to 11, which contain both summary and detailed data. Tables 1 through 8 present data on technical cooperation expenditures while tables 9, 10 and 11 record contributions. Tables 12 through 22 contain historical data on both contributions and expenditures since 1980.

3. In more detail, table 1 presents a summary of grant technical cooperation expenditures by agencies of the entire United Nations system while table 2 shows the same data but distributed according to sectors. These tables should be consulted if interest centres only on broad aggregate information. Table 3, an extremely aggregative table, brings together total United Nations system technical cooperation expenditures according to agency, sector and category of expenditure. Two features of this table are worth observing. First, for each agency/entity, expenditures are broken down according to type of expenditure: regular budget (A); United Nations system extrabudgetary sources other than UNDP (B1); non-United Nations system multilateral sources (B2); bilateral sources channelled through the United Nations system (C1); and unilateral "self-supporting" sources (C2). Second, all expenditures by UNDP, UNICEF and WFP are classified as B1 expenditures, distributed according to sector, which basically implies that these entities were directly responsible for the implementation of their entire programme. In fact, this is not necessarily so, but the aim here is to preserve tractability and to minimize double counting. In the case of UNFPA, because of its size and the ready availability of the requisite data, only a portion of its expenditure is classified as B1 - \$49.7 million out of a total of \$134.1 million in 2000. The message here is that reported B1 expenditures of executing and specialized agencies are augmented by the amount of UNFPA expenditures for which these agencies have been responsible (\$84.5 million). For these reasons, table 3 gives a more detailed picture of the resource linkages among entities of the United Nations system.

4. Tables 4 through 8 amplify on the sources, or expenditure categories, of table 3. More specifically, table 4 breaks down regular budget expenditures (A) by country and agency, which makes it possible to ascertain the amount of regular budgetary expenditure incurred by a given agency in a given country. As a consistency check, it will be noted that the grand total of this table is the same as that shown at the end of table 3, the extreme right column of row A. Table 5 contains the distribution of all non-United Nations system multilateral sources (B2) expenditure by country and agencies; the total in this table agrees with that of line B2 at the end of table 3, the extreme right column of row B2. The detailed country-agency breakdown of bilateral resources channelled to the United Nations executing and specialized agencies (C1) is given in table 6; the total of this table is the same as that of line C1 at the end of table 3, the extreme right column of row C1. Table 7 contains detailed expenditure data from United Nations system multilateral sources (B1), also classified by country and agency; the total in this table equals that shown by line B1 at the end of table 3, the right column of row B1. Finally, the country-agency distribution of unilateral expenditure (C2) routed to executing and specialized agencies and back to the contributing countries is shown by the "self-supporting expenditures" column of table 8; the total of this column agrees with that in line C2 of table 3, the extreme right column of row C2.

5. Table 9 contains data on extrabudgetary contributions to the executing and specialized agencies, organized under the following headings: unilateral and bilateral sources (country or territory and NGOs) and multilateral sources (United Nations system and non-United Nations system). Contributions received by executing and specialized agencies to fund "self-supporting" technical cooperation expenditures are presented in table 10.

6. The remaining tables contain historical data with varying time periods between 1980-2000. Contributions to and expenditure by UNDP, UNFPA, UNICEF, and WFP during 1995-2000 according to various criteria are given in tables 11 to 15. Technical cooperation expenditure, nominal amounts and rates of growth by the entire United Nations system for 1980-2000 can be found in tables 16 and 17. Two new tables have been added: tables 18 and 19, which show historical data on regular and extrabudgetary expenditure by the executing and specialized agencies. Tables 20 and 21 contain historical data and rates of growth of extrabudgetary contributions to the executing and specialized agencies. Finally, table 22 reports historical summary data on voluntary contributions received by UNDP, UNFPA, UNICEF and WFP.

### **C. Caveats**

7. Use of the data in the present document should be guided by the following caveats:

(a) Scope: The data on expenditure/contributions refer only to technical cooperation expenditure/contributions. The report defines technical cooperation activities to include the work of UNDP, the executing and specialized agencies, UNFPA, UNICEF and WFP. A complete account of expenditure incurred on (and contributions to) development activities by the United Nations system can be found in the annual report of the Secretary-General on this topic;

(b) Expenditure coverage: All expenditure data refers to the field programme activities of the entities concerned. All expenditure data is also net of administrative, support and other costs. Expenditure data thus refer to the actual amount of resources directly invested in developmental activities and is referred to in this document and DP/2001/30 as field programme expenditure. The only exception is WHO: its expenditure is inclusive of these other costs;

(c) World Bank/IDA: As a result of the shift in orientation and focus, the World Bank and IDA no longer specifically attempt to capture the technical cooperation components of their projects and are thus not in a position to provide this kind of data. In these changed circumstances, a new lending instrument, the learning and innovations loans (LILs), is now being used increasingly in place of technical assistance loans (TALs). LILs provide structured support for small, time-sensitive projects to pilot promising development initiatives based on a sound development hypothesis, or to experiment in order to develop locally based models prior to a larger-scale intervention. LILs thus focus on experimentation, learning and piloting in search of possible developmental solutions prior to larger-scale interventions. LILs incorporate opportunities for intensive monitoring and evaluation and include an assessment of borrower capacity and stakeholder response as part of the learning exercise when these are unknown. Loan proceeds of up to \$5 million are used for the services of consultants, small works, goods and equipment over a period of 2 to 4 years. Owing to their very diverse nature, LILs are not specifically geared to capacity-building and cannot be equated with technical cooperation;

(e) Contributions – Agency: Data on agency contributions refer to extrabudgetary contributions only; regular budgetary contributions are not included in the report. Because of this, agency contribution data in the present report must not be equated with income;

(f) Contributions – UNDP and UNFPA: Data on contributions to UNDP and UNFPA refer to voluntary contributions only. In the case of UNDP, cost-sharing, contributions to local office costs, government cash counterpart contributions, funds and trust funds and management services agreements and miscellaneous have been excluded from total contributions. For both entities, voluntary contributions are not the same as total contributions or total income;

(g) Contributions – UNICEF: Contribution data refer to voluntary contributions from Governments, the private sector and inter-organizational sources; contributions are not the same as total income.

## D. Terminology

8. Usage of the data contained in this addendum can be enhanced considerably from an understanding of the terminology employed, some of which may be unfamiliar. The most important definitions and concepts are given below.

9. Technical cooperation activities. These are activities that aim to promote increasing self-reliance and thus strengthen the conditions necessary for sustainable human development. They include human resources development (education, health, social development), and managerial, technical, administrative and research capabilities required to formulate and implement development plans and policies, including the management and development of appropriate institutions and enterprises, and policy advice. All United Nations entities reviewed in the present report, with the exception of the World Bank/IDA, are considered to engage in technical cooperation activities.

10. Regular budget expenditures (RBE). These refer to technical cooperation expenditures of executing and specialized agencies financed out of their assessed budgets (that is, contributions). They are therefore linked to voting power within agencies. Table 4 in the statistical annex contains detailed data on agency RBE. UNDP, UNICEF, UNFPA and WFP do not have RBE since contributions are entirely voluntary.

11. Extrabudgetary expenditures (EBE). As distinct from regular budget contributions, these refer to agency expenditures financed from voluntary contributions originating from multilateral and bilateral sources.

12. EBE – Multilateral. Multilateral sources are divided into (a) United Nations system (B1) and (b) multilateral sources outside of the United Nations system (B2). Total B1 (see table 3) expenditure comprises agency B1 and the rest of the system B1, excluding World Bank/IDA. Agency B1 expenditure funds technical cooperation activities from resources available within the United Nations system: they are, in other words, essentially payments to agencies by other entities of the United Nations system for services rendered. Considerable efforts have been made to avoid the problem of double-counting – of counting a payment and a receipt twice. The rest of the system B1 comprises expenditures from UNDP, UNICEF, UNFPA and WFP. Line B1 at the end of table 3 shows in summary form total B1 expenditures while a detailed breakdown is given in table 7. Multilateral sources of EBE outside the United Nations system are referred to in the present document as B2 expenditures; they are provided by outside entities such as regional development banks, the Commission of the European Communities, and the various Arab development funds. The crucial aspect of B2 expenditures is that they are passed on from outside multilateral entities to agencies of the United Nations system for the purpose of financing technical cooperation activities in developing countries. Line B2 at the end of table 3 gives a summary account of this category of EBE while the details are contained in table 5.

13. EBE – Bilateral. Bilateral EBE is also grouped into two categories (a) non-United Nations system sources (C1) and (b) unilateral self-supporting sources. The former comprises expenditures incurred against resources provided directly to the agency by a Member State or a non-governmental organization (NGO) to fund technical cooperation activities in developing countries; it is resources made available to the United Nations system from bilateral donors. It also includes expenditures against multi-bilateral contributions (i.e., contributions by one country for a specific project(s) in another country) as well as expenditures by the agency against special purpose funds managed by the agency itself. The term 'unilateral' is used to emphasize the fact that such expenditures finance technical cooperation activities within the country that made the contribution to the United Nations system. Unilateral expenditures are thus passed from the given country to the United Nations system and back to the same country; the only difference is that they have acquired a dual character: unilateral since they return to the contributing country; bilateral since they were routed from a country to the United Nations system.

14. Agency extrabudgetary contributions. These are used to fund EBE: one is the income side of the equation while the other is the expenditure side. Extrabudgetary contributions are voluntary contributions, which may be tied to a specific purpose or geographic location, and which are divided in two broad groups: bilateral and multilateral. Bilateral contributions are broken down into: (a) contributions from countries/territories - representing funds donated to the United Nations system to support activities in developing countries; (b) contributions from NGOs to the United Nations system; and (c) unilateral self-supporting contributions - contributions made by a country to finance technical cooperation activities in that country. Multilateral contributions are subdivided into: (a) contributions from the United Nations system (in essence, such contributions represent an internal transfer (that is, payment) of resources within the United Nations system from (mainly) funding agencies to executing agencies for services rendered) and (b) contributions originating outside of the United Nations system - contributions by multilateral organizations that are not part of the United Nations system. Examples of such organizations are the African Development Bank and the Arab Gulf Fund for United Nations Development Organizations.



# STATISTICAL ANNEX

**Table 1. The United Nations system: summary of technical cooperation expenditure by source of funding, 1999-2000**  
(In thousands of United States dollars)

Agency	Total agency technical cooperation expenditures		Funded by regular budgets		Funded by extrabudgetary sources other than UNDP, UNDP-administered funds, UNFPA, UNICEF and WFP <sup>a/</sup>		Technical cooperation expenditures by UNFPA		Technical cooperation expenditures by UNICEF and WFP <sup>b/</sup>		Technical cooperation expenditures by UNDP central resources <sup>c/</sup>		Technical cooperation expenditures by UNDP-administered funds		Total UNDP	
	1999	2000	1999	2000	1999	2000	1999	2000	1999	2000	1999	2000	1999	2000	1999	2000
UNITED NATIONS	27 369.5	28 618.5	5 746.0	4 177.2	21 623.5	24 441.3	3 683.5	2 029.6	-	-	(20 447.0)	12 019.0	58 797.0	25 493.0	38 350.0	37 512.0
UNCHS	46 783.2	81 422.6	865.2	422.7	45 917.9	80 999.9	-	-	-	-	17 313.0	14 541.0	2 334.0	2 144.0	19 647.0	16 685.0
UNCTAD	16 280.0	15 644.0	1 072.0	1 139.0	15 208.0	14 505.0	-	-	-	-	4 089.0	3 834.8	166.0	74.0	4 255.0	3 608.0
UNDP	-	-	-	-	-	-	673.5	249.5	-	-	22 674.0	20 862.8	71 276.0	193 379.0	93 950.0	214 361.0
UNV	14 110.8	16 916.2	-	-	14 110.8	16 916.2	-	-	-	-	5 528.0	2 608.0	14 110.0	19 576.0	19 638.0	22 184.0
UNESCO	124 674.0	183 733.6	13 665.0	17 715.6	110 989.0	146 018.0	3 242.0	636.9	-	-	9 245.0	7 653.0	-	11.0	9 245.0	7 674.0
UNFPA	-	-	-	-	-	-	73 296.4	49 653.2	-	-	-	-	-	-	-	-
UNICEF	-	-	-	-	-	-	-	-	817 890.0	884 984.0	-	-	-	-	-	-
UNIDO	68 867.0	58 951.0	5 857.0	1 385.0	63 010.0	57 566.0	-	-	-	-	6 673.0	4 802.0	780.0	28.0	7 453.0	4 830.0
UNITAR	-	-	-	-	-	-	-	-	-	-	53.0	9.0	4.0	-	57.0	9.0
UNRWA <sup>b/</sup>	285 608.1	290 781.0	11 841.1	11 296.7	273 767.0	267 482.3	-	-	-	-	-	-	-	-	-	-
UNOPS	-	-	-	-	-	-	338.4	331.7	-	-	213 293.0	154 640.0	129 893.0	92 373.0	343 186.0	247 013.0
ECA	7 945.0	6 085.0	4 995.0	3 736.0	2 950.0	2 346.0	144.3	(40.6)	-	-	468.0	682.0	-	-	468.0	682.0
ECE	6 276.5	5 648.7	1 407.4	1 227.9	4 869.1	4 420.8	530.0	209.8	-	-	88.0	23.0	-	-	88.0	23.0
ECLAC	8 239.1	10 721.8	2 300.8	2 255.6	5 938.3	8 466.2	395.2	278.0	-	-	533.0	639.0	-	-	533.0	639.0
ESCAP	9 619.2	10 022.8	-	-	9 619.2	10 022.8	1 186.0	220.5	-	-	239.0	618.0	29.0	42.0	268.0	660.0
ESCWA	1 913.5	2 041.2	1 805.9	1 928.0	107.6	115.2	55.3	24.8	-	-	691.0	723.0	-	-	691.0	723.0
FAO	258 983.5	290 813.2	44 254.2	29 590.9	214 709.3	261 222.3	1 575.1	1 324.1	-	-	18 047.0	10 006.0	817.0	2 639.0	18 864.0	12 644.0
IAEA	63 509.7	68 660.6	57 843.8	53 982.7	5 665.9	4 667.9	-	-	-	-	485.0	476.0	-	-	465.0	426.0
ICAO	30 430.0	35 256.0	-	-	30 430.0	35 256.0	-	-	-	-	23 634.0	21 318.0	-	180.0	23 634.0	21 498.0
IFC	-	-	-	-	-	-	-	-	-	-	231.0	84.0	805.0	-	1 036.0	84.0
ILO	73 828.0	73 033.0	18 971.0	8 459.0	54 857.0	64 574.0	1 317.0	622.3	-	-	11 268.0	11 306.0	234.0	1 378.0	11 502.0	12 684.0
IMF	-	-	-	-	-	-	-	-	-	-	2 163.0	1 660.0	124.0	20.0	2 287.0	1 710.0
IMO	12 437.0	10 263.0	2 184.0	2 504.0	10 253.0	7 779.0	-	-	-	-	-	81.0	178.0	178.0	81.0	
ITC	10 335.7	9 682.3	-	-	10 335.7	9 682.3	-	-	-	-	1 501.0	910.0	-	-	1 501.0	910.0
ITU	37 285.5	33 683.6	8 322.0	10 390.0	28 963.5	23 293.6	-	-	-	-	1 222.0	1 006.0	-	-	1 222.0	1 006.0
IUPU	3 517.0	2 368.0	1 840.0	1 374.0	1 877.0	1 014.0	-	-	-	-	1.0	42.0	-	-	1.0	42.0
WFP	-	-	-	-	-	-	-	-	1 429 569.9	1 491 034.6	-	-	-	-	-	-
WHO <sup>b/</sup>	396 618.5	798 149.0	247 892.5	290 272.0	148 726.0	505 677.0	6 680.6	3 646.4	-	-	11 315.0	2 125.0	-	56.0	11 315.0	2 181.0
WIPO	20 465.7	31 897.9	13 323.7	27 715.7	7 142.0	4 182.2	-	-	-	-	142.0	70.0	-	-	142.0	70.0
WMO	-	-	-	-	-	-	-	-	-	-	1 773.0	3 606.0	526.0	(78.0)	2 299.0	3 527.0
WTO	269.4	359.2	-	-	269.4	359.2	-	-	-	-	848.0	761.0	-	-	848.0	761.0
WORLD BANK	-	-	-	-	-	-	-	-	-	-	995.0	1 098.0	1 328.0	481.0	2 323.0	1 557.0
ASDB	-	-	-	-	-	-	-	-	-	-	116.0	-	452.0	84.0	568.0	84.0
NGOs	-	-	-	-	-	-	34 787.1	22 644.6	-	-	5 090.0	11 048.0	8 345.0	10 373.0	13 435.0	22 021.0
NEX	-	-	-	-	-	-	59 242.6	51 996.8	-	-	1 292 562.0	1 183 607.0	122 037.0	111 521.0	1 414 599.0	1 275 128.0
OTHERS	-	-	-	-	-	-	-	-	-	-	-	4 489.0	-	34.0	-	4 603.0
<b>TOTAL (Agencies)</b>	<b>1 525 345.9</b>	<b>2 022 864.2</b>	<b>444 006.8</b>	<b>469 676.0</b>	<b>1 081 339.3</b>	<b>1 563 319.1</b>	<b>187 149.3</b>	<b>134 132.3</b>	<b>2 247 459.9</b>	<b>2 376 018.7</b>	<b>1 631 813.0</b>	<b>1 457 911.0</b>	<b>412 303.0</b>	<b>459 786.0</b>	<b>2 044 116.0</b>	<b>1 917 699.0</b>

(Footnotes on the following page)

**Table 1 (continued)**

- a/ The sum total of this column is equal to B1 minus [UNFPA+UNICEF+WFP+UNDP(central resources and administered funds)]+B2+C1+C2 in table 3 or, alternatively, the sums of table 5 through table 7 minus [UNFPA+UNICEF+WFP+UNDP(central resources and administered funds) + "Self-supporting expenditures" of table 8. In different ways, table 3 through 8 amplify the summary data contained in table 1.
- b/ This column represents UNICEF and WFP expenditures for which the agency breakdown was not available.
- c/ Based on expenditures from regular resources, cost-sharing, SPR, SMF/LDC and SIS.
- d/ Includes DESA (formerly DDSMS) and DESIPA.
- e/ Includes UNDESA only.
- f/ Includes programme expenditures of \$8,138,017 in 1999 and \$8,630,109 in 2000 reported by UNDP country offices for which the detailed distribution will be in effect in the following year.
- g/ UNFPA-funded expenditure of \$0.268 million to UNDP-administered fund of UNIFEM. This amount also comprises expenditures of \$42.871 million (UNCDF), \$16.891 million (UNIFEM), \$0.249 million (UNRFNRE), \$0.282 million (UNSO), \$133.088 million (DEX).
- h/ In 1999, UNRWA reported amended figures for regular budgets and extrabudgetary sources.
- i/ Provisional. See "Note on the data" at the beginning of the report for an explanation of WHO expenditure as regards their two-year biennium.
- j/ UNDP reported this expenditure for government cash counterpart contribution.  
The amount of \$34,000 under UNDP-administered trust funds for 2000 represent the expenditure for the International Organization for Migration (IOM).

Note:  
The World Bank/IDA no longer specifically allocates expenditures to technical cooperation activities. See "Note on data" for a clarification of this issue. UNITAR and WMO reported no UNDP-financed technical cooperation expenditures during 1999 and 2000.

**Table 2. United Nations system: summary of technical cooperation expenditure by sector, 1999 - 2000**  
(In thousands of United States dollars)

ACC Programme Classification Categories	Total agency technical cooperation expenditures		Funded by regular budgets		Funded by extrabudgetary sources other than UNDP, UNDP-administered funds, UNFPA, UNICEF and WFP <sup>a/</sup>		Technical cooperation expenditures by UNFPA		Technical cooperation expenditures by UNICEF		Technical cooperation expenditures by WFP		Technical cooperation expenditures by UNDP					
	1999	2000	1999	2000	1999	2000	1999	2000	1999	2000	1999 <sup>c/</sup>	2000	Central resources <sup>b/</sup>		Administered funds		Total	
													1999	2000	1999	2000	1999	2000
01 Political Affairs	1 656.0	2 900.9	-	-	1 656.0	2 900.9	-	-	-	-	-	-	15 291.0	14 720.0	18 877.0	27 296.0	34 168.0	42 016.0
02 General Development Issues	38 832.2	63 942.5	8 968.9	10 851.5	29 863.3	53 091.0	-	-	134 955.0	144 185.9	-	-	653 182.0	320 284.0	50 383.0	58 122.0	703 565.0	378 408.0
03 General Statistics	11 066.4	11 977.3	2 355.2	1 414.3	8 741.2	10 563.0	-	-	8 544.0	11 612.9	-	-	8 374.0	13 974.0	5 876.0	4 618.0	14 050.0	18 582.0
04 Natural Resources	22 022.0	14 124.9	5 578.6	3 670.2	16 443.5	10 254.7	-	-	-	-	85 155.7	58 904.8	70 302.0	82 970.0	27 991.0	27 496.0	97 963.0	120 486.0
05 Energy	9 318.8	12 980.5	6 897.2	6 446.1	2 421.6	6 534.4	-	-	-	-	-	-	42 931.0	40 105.0	63 866.0	60 578.0	126 629.0	130 880.0
06 Agriculture, Forestry and Fisheries	274 931.1	310 141.2	53 283.9	58 360.1	221 647.2	271 781.1	-	-	-	-	41 498.4	50 076.8	109 598.0	250 198.0	18 381.0	20 758.0	125 958.0	270 834.0
07 Industry	7 480.5	13 620.3	4 275.5	3 707.1	3 185.0	9 913.2	-	-	-	-	-	-	51 733.0	121 020.0	3 080.0	5 063.0	54 793.0	128 113.0
08 Transport	89 197.7	40 410.1	6 987.8	348.8	82 210.1	40 081.5	-	-	-	-	1 642.8	1 137.4	50 468.0	111 676.0	4 489.0	6 862.0	54 958.0	118 537.0
09 Communications and Information	53 073.2	58 047.4	12 839.3	16 572.9	40 233.9	41 474.5	-	-	9 620.0	16 151.7	-	-	39 788.0	66 676.0	545.0	360.0	40 315.0	69 036.0
10 Trade and Development	27 089.4	26 210.6	957.2	1 282.4	26 132.2	25 228.2	-	-	-	-	-	-	16 096.0	38 854.0	5 430.0	3 623.0	21 498.0	42 487.0
11 Population	873.3	1 517.3	205.6	150.3	667.7	1 367.0	187 149.3	134 132.3	6 993.0	8 111.6	-	-	1 359.0	2 658.0	15.0	351.0	1 374.0	2 907.0
12 Human Settlements	57 863.8	84 049.0	865.2	422.7	56 998.5	83 626.3	-	-	7 977.0	8 805.4	6 725.0	3 846.5	32 484.0	31 825.0	15 857.0	9 940.0	48 341.0	40 545.0
13 Health	418 840.9	818 696.4	267 593.3	308 627.7	151 047.6	510 031.7	-	-	382 261.0	419 188.3	43 379.3	38 463.2	147 218.0	84 156.0	7 128.0	6 215.0	154 344.0	60 373.0
14 Education	48 862.0	59 752.1	9 361.7	7 862.2	39 520.3	51 898.9	-	-	126 450.0	127 509.2	66 570.1	62 854.5	132 137.0	59 670.0	5 420.0	5 306.0	137 557.0	64 976.0
15 Employment	35 333.8	27 295.0	11 036.0	4 608.0	24 297.6	22 387.0	-	-	-	-	-	-	41 248.0	65 615.0	7 183.0	7 870.0	48 431.0	73 685.0
16 Humanitarian Assistance	290 482.4	303 441.3	13 211.3	11 648.0	277 251.0	291 795.2	-	-	28 406.0	45 188.8	1 180 385.9	1 267 639.2	45 745.0	40 862.0	22 598.0	26 444.0	66 341.0	67 328.0
17 Social Development	56 735.8	69 385.2	5 478.3	4 431.3	51 256.5	64 953.9	-	-	99 620.0	102 364.4	-	-	90 563.0	25 994.0	23 971.0	31 818.0	114 534.0	57 802.0
18 Culture	22 377.3	28 312.4	7 466.5	12 224.6	14 810.8	14 067.9	-	-	-	-	-	-	1 061.0	5 585.0	679.0	348.0	1 740.0	5 913.0
19 Science and Technology	35 461.3	42 635.5	21 003.9	32 440.5	14 457.4	10 186.0	-	-	-	-	-	-	9 282.0	50 602.0	1 214.0	8 828.0	10 498.0	59 431.0
20 Environment	10 434.2	32 545.5	4 133.3	5 006.2	6 300.9	27 540.3	-	-	1 084.0	1 977.8	-	-	65 756.0	16 381.0	108 786.0	105 380.0	174 521.0	121 751.0
21 Unspecified	13 231.9	6 538.3	1 510.1	703.3	11 721.7	4 838.0	-	-	-	-	4 233.0	8 312.5	7 449.0	2 329.0	3 284.0	13 425.0	10 513.0	16 754.0
Others	372.0	127.5	-	-	372.0	127.5	-	-	-	-	-	-	-	-	-	-	-	-
<b>TOTAL (All Sectors)</b>	<b>1 525 345.9</b>	<b>2 022 894.2</b>	<b>444 006.6</b>	<b>489 575.0</b>	<b>1 081 339.3</b>	<b>1 553 319.1</b>	<b>187 149.3</b>	<b>134 132.3</b>	<b>817 890.0</b>	<b>684 964.0</b>	<b>1 429 569.9</b>	<b>1 491 034.6</b>	<b>1 631 813.0</b>	<b>1 457 911.0</b>	<b>412 303.0</b>	<b>459 788.0</b>	<b>2 044 118.0</b>	<b>1 917 699.0</b>

<sup>a/</sup> The sum total of this column is equal to B1 minus [UNFPA+UNICEF+WFP+UNDP(central resources and administered funds)]+B2+C1+C2 in table 3 or, alternatively, the sums of table 7 minus [UNFPA+UNICEF+WFP+UNDP(central resources and administered funds)] + table 5 + table 6 + "Self-supporting expenditures" of table 8.

<sup>b/</sup> Based on expenditure from regular resources, cost-sharing, SPR, SMF/LDC and SIS. As of 1997, UNV expenditure is being reported separately.

<sup>c/</sup> WFP submitted revised expenditure figures for 1999.

**Note:**

The World Bank/IDA no longer specifically allocate expenditures to technical cooperation activities. See "Note on data" for a clarification of this issue.





Table 3 (continued)

Executing agency	Category of expenditure	Sector g/																					Others c/	TOTAL
		1	2	3	4	5	6	7	8	9	10	11	12	13	14	15	16	17	18	19	20	21		
WIPO	A	-	-	-	-	-	-	-	-	-	-	-	-	-	-	-	-	-	8 154.8	19 561.2	-	-	-	27 716.0
	B2	-	-	-	-	-	-	-	-	-	-	-	-	-	-	-	-	-	-	360.2	-	-	-	360.2
	C1	-	-	-	-	-	-	-	-	-	-	-	-	-	-	-	-	-	-	667.8	3 234.2	-	-	3 902.0
	Sub-total	-	-	-	-	-	-	-	-	-	-	-	-	-	-	-	-	-	-	8 722.3	23 155.6	-	-	31 877.9
WTO	C2	-	-	-	-	-	-	-	-	-	-	359.2	-	-	-	-	-	-	-	-	-	-	-	359.2
NGOs	B1	-	-	-	-	-	-	-	-	-	-	22 644.8	-	-	-	-	-	-	-	-	-	-	-	22 644.8
NATIONAL EXECUTION	B1	-	-	-	-	-	-	-	-	-	-	51 895.9	-	-	-	-	-	-	-	-	-	-	-	51 895.9
TOTAL	A	-	10 851.5	1 414.3	3 870.2	6 446.1	36 380.1	3 707.1	348.6	16 572.9	1 282.4	150.3	422.7	306 827.7	7 852.2	4 908.0	11 646.1	4 431.3	12 224.6	32 440.5	5 005.2	703.3	-	496 673.0
	B1	42 016.0	529 002.5	34 314.9	179 522.6	132 562.8	454 319.9	129 976.6	119 941.4	89 154.7	43 021.5	145 280.9	107 156.5	555 526.6	270 314.7	73 773.0	1 381 262.8	181 316.6	6 744.0	80 912.2	133 528.4	24 096.5	-	4 670 650.0
	B2	552.7	10 021.5	18.0	(74.5)	.8	11 320.3	493.0	1012.6	799.6	645.1	9.1	2 055.1	497.0	1 413.2	946.6	287 782.0	419.4	311.1	418.9	117.1	4 612.0	-	323 280.6
	C1	2 348.2	30 322.2	6 006.5	4 314.2	4 384.4	106 972.2	4 951.3	4 302.9	14 136.0	21 636.3	1 006.3	26 421.4	72 929.9	20 784.7	21 043.4	1 846.3	18 761.4	11 755.6	8 090.4	15 313.6	223.0	127.5	398 067.9
	C2	-	6 319.7	626.6	5 863.0	288.4	20 139.4	635.3	34 479.0	25 571.9	1 062.3	242.6	789.2	429 100.8	14 498.0	339.0	1 056.0	44 631.0	1 190.0	185.5	2 010.0	-	-	589 021.6
GRAND TOTAL		44 916.9	596 514.4	42 382.2	193 495.5	143 690.5	831 152.0	139 733.3	190 084.5	143 235.1	67 867.8	146 698.2	137 245.9	1 384 982.0	314 870.6	100 980.0	1 683 805.2	229 551.6	32 225.4	102 085.5	155 974.3	29 804.8	127.5	6 450 744.1

- a/ For the sector represented by these numbers, see the left-hand column of table 2.
- b/ A - Regular budget
  - B1 - Funded by United Nations system multilateral sources plus UNFPA, UNICEF, WFP and UNDP (central resources and administered funds)
  - B2 - Non-United Nations system multilateral sources
  - C1 - Bilateral resources channelled through the United Nations system.
  - C2 - Unilaterally financed "self-supporting" expenditures.
- c/ Sectoral breakdowns were not available for amounts under "Others".
- d/ Includes DESA and DESIPA.
- e/ UNFPA-funded expenditures of \$249,500 in the population sector (11) to UNDP-administered fund for UNIFEM.
- f/ The data provided by UNESCO under "Regular budget (category "A")" represent expenditures incurred under that organization's participation programme.
- g/ Includes support costs.

Notes:

This table is an overall summary of technical cooperation expenditures of the United Nations system. The first two columns on the left show the executing agency and the category of expenditures; the other columns show the sectoral distribution of expenditures. The purpose of the table is to identify the executing agency and the amount, by sector, of technical cooperation expenditure for which each agency was directly responsible or which it implemented. For example, UNFPA directly implemented \$49.7 million of its \$134.1 million technical cooperation expenditure in 2000.

Source of funds category "A" corresponds to the "Funded by regular budgets" column of tables 1 and 2, while B1+B2+C1+C2 correspond to the "Funded by extrabudgetary sources other than UNDP and UNDP-administered funds, UNFPA, UNICEF and WFP" column of tables 1 and 2 plus the columns of "UNFPA", "UNICEF and WFP" and "UNDP central resources" and "UNDP-administered funds". For a more detailed breakdown of each budget source, see tables 4 through 7, and the "Self-supporting expenditures" column of table 8. See notes at the end of these tables for further explanation.

Since total B1 of this table comprises agency expenditures funded from other multilateral sources plus those of UNFPA, UNICEF, WFP and UNDP (central resources and administered funds), then agency B1 expenditure is equal to total B1 - [UNFPA+UNICEF+WFP+UNDP(central resources and administered funds)]. Total agency multilateral expenditure is then equal to total B1 - [UNFPA+UNICEF+WFP+UNDP(central resources and administered funds)] + B2. Total multilateral expenditure from United Nations system sources, including agency multilateral expenditures, is equal to total B1+B2 of table 3.

To assist in the interpretation of table 3, it will be helpful to work with a picture of the flow of resources through the United Nations system; that is, how resources are channelled from one entity to the other. Executing and specialized agencies use their own resources (from RBE and EBE) to fund activities which they execute themselves. Since these agencies also execute programmes/projects funded by other entities within the system, such as UNDP and UNFPA, they receive payment for such services. These transactions thus have two sides: expenditure for entities making the payment, and income for entities receiving the payment. Some 'funding' agencies also execute a share of their programme. For example, the value of activities funded and executed by UNDP (central resources) was \$21.0 million; for UNFPA, it was \$49.7 million in 2000. Other entities, such as UNICEF and WFP, did not channel any of their expenditure to the rest of the United Nations system in 2000. There are also activities jointly funded and executed by more than one entity. Clearly, the resource linkages among the entities of the United Nations system is a complex one, which also raises the issue of double-counting, but considerable efforts have been taken to minimize this source of error.

Table 4. Executing and specialized agencies: regular budget expenditure by country or area, 2000 a/  
(in thousands of United States dollars)

Country or area	United Nations	UNCHS	UNCTAD	UNESCO	UNIDO	UNRWA	ECA	ECE	ECCLAC	ESOWA	FAO	IAEA	ILO	IMO	ITU	UPU	WHO	WIPO	TOTAL
Albanian																			
Albania				108.0							144.4						3,217.0		3,361.4
Algeria				92.0							141.7	135.6	7.0			3.0	122.0		445.2
Andorra				87.5							206.4	603.7	30.0				1,232.0		2,167.2
Angola				71.0							321.7	22.8	0.0				1,554.0		1,978.5
Angola and Benin																			
Antigua and Barbuda				110.0							32.6						20.0		171.6
Argentina				106.0	8.0						1,224.0	488.8	92.0				1,224.0		2,128.8
Aruba				66.0							212.0	256.5					95.0		468.7
Australia				66.0									4.0						68.0
Austria				70.0															68.0
Azerbaijan				113.0							81.3								70.0
Bahamas				108.0							18.5					31.0	166.0		370.3
Bahrain				52.5													72.0		328.5
Bangladesh				107.0							201.0	690.1	28.0				4,459.0		5,128.5
Barbados				101.0							82.8		16.0				156.0		331.8
Belarus				110.8	8.0							669.8	11.0				38.0		835.4
Belgium				124.6							125.7								68.0
Belize				91.0							25.1								68.0
Benin				92.0									110.0				1,419.0		1,673.2
Bhutan				76.0	18.0												1,682.0		1,774.7
Bolivia				56.0							334.7	191.0	11.0				1,043.0		1,673.7
Bonaire and Herzogovine				122.0							2.0	150.1	11.0				1,043.0		1,225.0
Bolivia				101.0	18.0						406.1	810.4	66.0				1,730.0		3,145.0
Brazil				96.0															1,511.5
British Virgin Islands				96.0															94.0
Bonaire, Dutch Caribbean				93.1															14.0
Bulgaria				121.0	30.0						70.4	549.7				20.0	15.0		743.1
Burkina Faso				93.0							704.2	34.0	71.0			51.0	1,841.0		2,824.3
Burundi				96.0							100.2		12.0				2,094.0		2,867.2
Cambodia				96.0							317.2								2,628.2
Cameroon				115.5							96.0	236.8	66.0			2.0	2,208.0		2,628.2
Canada				70.0							329.5		31.0			4.0	1,328.0		1,702.5
Cape Verde				90.0													1,852.0		1,942.0
Caribbean Islands				88.0							148.8		21.0			21.0	1,974.0		2,127.0
Cayman Islands				105.0															1,950.0
Central and Eastern European countries				86.0															1,950.0
Chad				86.0	10.0						141.5		8.0				973.0		1,073.0
China				115.0							353.2	548.5	73.0				1,860.0		2,214.5
Colombia				96.0							370.3	1,115.4	190.0				368.0		1,437.7
Comoros				37.0	12.0						83.0								5,460.7
Congo				100.0							84.0	463.8	14.0			3.0	1,908.0		2,646.8
Cook Islands				69.2							564.3		25.0				1,314.0		1,468.8
Costa Rica				84.2							86.5						1,621.0		2,510.3
Cuba				115.0							210.4	131.0	49.0			7.0	1,246.0		1,599.7
Cuba and Haiti				115.0							253.1	186.5	9.0			7.0	1,153.0		1,500.0
Cyprus				27.0	165.0						2.4	245.2	51.0				233.0		1,822.0
Czech Republic				67.7							384.7	714.8	26.0				108.0		1,688.0
Democratic People's Republic of Korea				66.0							7.0	355.4	9.0				13.0		476.8
Democratic Republic of the Congo				122.6							41.3								1,714.0
Denmark				85.0							524.4	160.2	69.0				2,305.0		3,171.1
Djibouti				90.0							72.2		17.0			4.0	1,129.0		1,221.1
Dominican Republic				95.0							15.3	283.9	3.0				1,153.0		1,277.2
Ecuador				50.0							285.7	168.0	9.0				1,539.0		2,051.2
Egypt				112.0							151.5	738.8	26.0			29.0	1,026.0		2,011.1
Equatorial Guinea				76.0							140.8	105.8	6.0				1,137.0		1,313.8
Ethiopia				90.0									1.0				1,142.0		1,313.6



Table 4 (continued)

Country or area	United Nations	UNCTAD	UNESCO	UNIDO	UNRWA	ECA	ECE	ECLAC	ESOWA	FAO	IAEA	ILO	IMO	ITU	UPU	WHO	WIPO	TOTAL
Eritrea	-	-	120.0	7.0	-	-	-	-	-	210.1	-	9.0	-	-	8.0	1,963.0	-	2,317.1
Estonia	-	-	75.0	-	-	-	-	-	-	14.5	14.5	15.0	-	-	22.0	126.5	-	126.5
Ethiopia	-	-	66.0	-	-	-	-	-	-	1,092.3	686.3	127.0	-	-	28.0	2,473.0	-	4,442.6
Fi	-	-	-	-	-	-	-	-	-	137.1	-	20.0	-	-	4.0	1,482.0	-	1,653.1
Finland	-	-	70.0	-	-	-	-	-	-	-	-	-	-	-	-	-	-	70.0
France	-	-	70.0	-	-	-	-	-	-	-	-	-	-	-	-	-	-	70.0
French Guiana	-	-	-	-	-	-	-	-	-	-	-	-	-	-	-	19.0	-	19.0
Gabon	-	-	115.0	-	-	-	-	-	-	19.0	52.8	8.0	-	-	-	1,246.0	-	1,433.9
Gambia	-	-	68.0	-	-	-	-	-	-	310.0	14.0	-	-	-	19.0	1,246.0	-	2,064.1
Ghana	-	-	80.0	-	-	-	-	-	-	455.5	159.7	28.0	-	-	-	68.0	-	680.0
Guatemala	-	-	85.0	-	-	-	-	-	-	-	-	-	-	-	-	-	-	85.0
Guinea	-	-	113.0	-	-	-	-	-	-	523.7	401.3	105.0	-	-	17.0	1,413.0	-	2,573.0
Greece	-	-	75.0	-	-	-	-	-	-	145.8	-	-	-	-	-	220.8	-	220.8
Greenland	-	-	78.1	-	-	-	-	-	-	33.7	-	-	-	-	-	52.0	-	183.8
Guam	-	-	-	-	-	-	-	-	-	-	-	-	-	-	-	5.0	-	5.0
Guatemala	-	-	110.0	42.0	-	-	-	-	-	14.2	110.9	2.0	-	-	-	681.0	-	1,190.1
Guinea	-	-	95.0	101.0	-	-	-	-	-	108.7	-	44.0	-	-	20.0	1,740.0	-	2,196.7
Guinea-Bissau	-	-	48.0	-	-	-	-	-	-	200.1	-	11.0	-	-	28.0	1,410.0	-	1,697.1
Guyana	-	-	84.0	-	-	-	-	-	-	144.3	-	12.0	-	-	492.0	13.0	-	726.0
Haiti	-	-	112.0	-	-	-	-	-	-	144.3	-	12.0	-	-	492.0	13.0	-	726.0
Hong Kong, China	-	-	90.0	12.0	-	-	-	-	-	84.7	-	9.0	-	-	-	585.0	-	700.7
Hungary	-	-	85.0	-	-	-	-	-	-	83.5	156.0	26.0	-	-	-	96.0	-	106.0
Iceland	-	-	51.0	-	-	-	-	-	-	-	-	-	-	-	-	48.0	-	378.4
India	-	-	90.0	-	-	-	-	-	-	353.5	-	162.0	-	-	18.0	6,402.0	-	9,023.5
Indonesia	-	-	125.0	-	-	-	-	-	-	136.3	466.7	64.0	-	-	-	5,636.0	-	6,632.9
Iran (Islamic Republic of)	-	-	120.0	-	-	-	-	-	-	84.9	-	17.0	-	-	-	1,335.0	-	2,222.4
Iraq	-	-	93.0	-	-	-	-	-	-	81.9	-	18.0	-	-	-	1,288.0	-	1,584.8
Ireland	-	-	13.0	-	-	-	-	-	-	-	-	-	-	-	-	-	-	13.0
Israel	-	-	100.0	-	-	-	-	-	-	287.8	-	-	-	-	-	-	-	319.0
Italy	-	-	80.0	-	-	-	-	-	-	-	-	-	-	-	-	1,715.0	-	1,715.0
Jamaica	-	-	82.6	-	-	-	-	-	-	161.7	295.9	47.0	-	-	-	1,436.0	-	2,003.1
Japan	-	-	85.0	-	-	-	-	-	-	-	-	-	-	-	-	21.0	-	86.0
Jordan	-	-	85.0	42.0	-	-	-	-	-	96.7	320.8	10.0	-	-	7.0	580.0	-	1,102.7
Kazakhstan	-	-	94.3	-	-	-	-	-	-	126.9	504.2	9.0	-	-	-	50.0	-	784.4
Kenya	-	-	112.0	-	-	-	-	-	-	84.5	172.3	73.0	-	-	20.0	1,788.0	-	2,259.8
Kiribati	-	-	41.0	-	-	-	-	-	-	-	-	3.0	-	-	-	51.0	-	565.0
Kuwait	-	-	84.0	-	-	-	-	-	-	54	-	20.0	-	-	-	131.0	-	205.0
Kyrgyzstan	-	-	108.0	-	-	-	-	-	-	177.0	-	8.0	-	-	32.0	142.0	-	389.0
Laos People's Democratic Republic	-	-	106.0	-	-	-	-	-	-	52.8	128.1	11.0	-	-	-	25.0	-	335.6
Latvia	-	-	96.0	15.0	-	-	-	-	-	216.4	248.3	50.0	-	-	26.0	1,333.0	-	1,990.7
Lebanon	-	-	106.0	-	-	-	-	-	-	112.2	-	12.0	-	-	38.0	1,067.0	-	1,334.2
Lebanon	-	-	107.0	-	-	-	-	-	-	265.9	-	11.0	-	-	-	2,006.0	-	2,389.0
Leban Arab Jamaniya	-	-	86.0	-	-	-	-	-	-	243.7	177.2	-	-	-	-	388.0	-	694.9
Lithuania	-	-	106.0	-	-	-	-	-	-	76.0	155.3	1.0	-	-	-	15.0	-	356.3
Luxembourg	-	-	20.0	-	-	-	-	-	-	-	-	-	-	-	-	-	-	20.0
Macao	-	-	10.0	-	-	-	-	-	-	68.8	-	1.0	-	-	11.0	1,428.0	-	2,487.9
Madagascar	-	-	96.5	-	-	-	-	-	-	213.1	83.1	33.0	-	-	3.0	1,580.0	-	1,899.3
Malawi	-	-	92.0	-	-	-	-	-	-	49.8	365.8	24.0	-	-	-	742.0	-	1,233.6
Malaysia	-	-	91.0	-	-	-	-	-	-	38.8	-	4.0	-	-	4.0	1,596.0	-	1,670.8
Maldives	-	-	82.0	-	-	-	-	-	-	90.2	200.7	10.0	-	-	-	1,896.0	-	2,476.0
Malta	-	-	56.0	-	-	-	-	-	-	17.8	25.8	-	-	-	-	13.0	-	111.4
Marshall Islands	-	-	-	-	-	-	-	-	-	-	-	-	-	-	-	53.0	-	53.0
Marshall Islands	-	-	73.0	-	-	-	-	-	-	2.6	-	-	-	-	-	68.0	-	143.6
Mauritania	-	-	114.5	-	-	-	-	-	-	748.1	-	10.0	-	-	-	1,606.0	-	2,481.6
Mauritius	-	-	114.0	27.0	-	-	-	-	-	18.0	145.2	22.0	-	-	-	677.0	-	862.2
Mexico	-	-	14.0	-	-	-	-	-	-	438.9	573.4	106.0	-	-	-	1,189.0	-	2,425.3
Micronesia (Federated States of)	-	-	81.0	-	-	-	-	-	-	-	-	-	-	-	-	201.0	-	288.0



Table 4 (continued)

Country or area	United Nations	UNCHS	UNCTAD	UNESCO	UNIDO	UNRWA	ECA	ECE	ECLAC	ESCWA	FAO	IAEA	ILO	IMO	ITU	UPU	WHO	WIPO	TOTAL
Thailand				102.0							439.6	439.5	70.0						5 061.1
The former Yugoslav Republic of Macedonia				60.0							9.1	321.0				13.0	4 027.0		431.1
Togo				101.6							56.4		28.0			12.0	1 305.0		1 533.0
Tokelau Islands																	57.0		57.0
Tonga				111.0							148.0						535.0		794.0
Trinidad and Tobago				110.0							196.7		11.0				518.0		837.7
Tunisia				106.0							192.6	354.8	14.0				458.0		1 125.5
Turkey				113.0							339.9	189.9	23.0				198.0		863.8
Turkmenistan				60.0													50.0		110.0
Turks and Caicos Islands																	39.0		39.0
Tuvalu																	21.0		21.0
Uganda				109.0							439.0	212.0	45.0			8.0	1 667.0		2 678.0
Ukraine				99.0								723.6	89.0				5.0		899.8
United Arab Emirates				40.0									2.0				56.0		98.0
United Kingdom				70.0															70.0
United Republic of Tanzania				85.0							435.9	440.9	25.0			19.0	2 016.0		3 021.5
Uruguay				100.0							82.8	236.6	45.0				59.0		525.6
Uzbekistan				115.0								547.5				33.0	37.0		732.5
Vanuatu				80.0							133.5					21.0	814.0		1 048.5
Venezuela				105.0							401.9	126.5	12.0			19.0	1 353.0		2 017.4
Viet Nam				110.0							859.9	599.8	108.0			30.0	1 680.0		3 352.7
West Bank and Gaza												71.0	8.0				755.0		834.0
Yemen				118.0							72.5	226.2	43.0				1 948.0		2 406.8
Yugoslavia <sup>g/</sup>				66.0							314.3		6.0						386.3
Zambia				103.0							410.4	108.4	76.0			7.0	2 128.0		2 830.8
Zimbabwe				106.0							184.7	150.0	60.0			8.0	1 910.0		2 445.8
Others <sup>f/</sup>				962.6							150.3						712.0		1 844.9
Unspecified <sup>g/</sup>												566.5							566.5
Total (All countries)				17 502.1	997.0						31 180.5	31 336.7	4 603.0			909.0	167 691.0		274 202.2
Regional Africa					6.0		3 739.0					695.7	5 622.6	1 141.0		2 773.0	98.0	27 028.0	41 093.4
Regional Arab States				113.5		11 298.7				1 926.0	444.6		402.0				1 256.0		25 177.0
Regional Asia and the Pacific					68.0			1 227.9			200.0	5 464.4	316.0				1 281.0	42.0	33 268.2
Regional Europe					96.0							4 678.7	180.0				1 102.0	15.0	22 453.7
Regional Latin America and the Caribbean					76.0				2 255.6		837.1	4 484.7	811.0			1 329.0	145.0	20 903.0	30 844.4
Interregional <sup>h/</sup>	4 177.2		1 139.0								50.9	2 062.6	1 104.0	2 504.0					11 234.7
Global <sup>h/</sup>		422.7			137.0						(3 788.1)						2 650.0		31 301.4
Total (intercountry)	4 177.2	422.7	1 139.0	113.5	588.0	11 298.7	3 739.0	1 227.9	2 255.6	1 926.0	(1 569.5)	22 643.0	3 956.0	2 504.0	10 390.0	465.0	102 581.0	27 715.7	195 372.8
GRAND TOTAL	4 177.2	422.7	1 139.0	17 715.6	1 385.0	11 298.7	3 739.0	1 227.9	2 255.6	1 926.0	29 590.9	53 962.7	8 459.0	2 504.0	10 390.0	1 374.0	290 272.0	27 715.7	469 575.0

a/ This table gives a detailed breakdown of total line A (regular budget) expenditures in table 3.

b/ The data provided by UNESCO under the regular budget represent expenditures incurred under that organization's participation programme.

c/ Data include support costs.

d/ On 1 July 1997, Hong Kong became a Special Administrative Region of China.

e/ The amount under FAO represents expenditure for Kosovo.

f/ UNESCO and FAO reported their respective amounts under their regular budgets with no further breakdown. WHO reported this amount under its regular budget for "newly independent States".

g/ IAEA reported this amount under "Unspecified" with no further breakdown.

h/ IMO and WHO reported combined expenditure for "interregional" and "global" activities.

**Table 5. Executing and specialized agencies: extrabudgetary expenditure financed from non-United Nations system multilateral sources by country or area, 2000 a/**  
 (In thousands of United States dollars)

Country or area	United Nations	UNCHS	UNCTAD	UNV	UNESCO	UNRWA	ECA	ESCWA	FAO	IAEA	ICAO	ILO	IMO	ITC	ITU	UPU	WIPO	TOTAL
Albania	-	66.2	-	-	-	-	-	-	3.0	-	-	-	-	-	-	-	-	81.2
Algeria	-	-	-	(1.7)	-	-	-	-	-	-	-	-	-	-	-	-	-	(1.7)
Angola	-	1.3	-	217.5	-	-	-	-	466.3	-	-	-	-	-	-	-	-	685.1
Anguilla	-	-	-	6.6	-	-	-	-	-	-	-	-	-	-	-	-	-	6.6
Argentina	-	-	-	87.4	48.0	-	-	-	-	-	-	-	-	-	-	-	-	135.4
Azerbaijan	-	-	-	89.6	-	-	-	-	-	-	-	-	-	-	-	-	-	89.6
Bangladesh	-	-	-	22.5	-	-	-	-	(6.8)	-	-	-	-	-	-	-	-	13.9
Benin	-	-	-	3.9	-	-	-	-	-	-	-	-	-	-	-	-	-	3.9
Bhutan	-	-	-	76.2	-	-	-	-	-	-	-	-	-	-	-	-	-	76.2
Bolivia	-	-	-	-	-	-	-	-	-	2.6	-	-	-	-	-	-	-	2.6
Bosnia and Herzegovina	-	-	165.0	358.5	-	-	-	-	2.1	-	292.0	-	-	-	-	-	-	817.6
Botswana	-	-	-	98.6	-	-	-	-	-	-	-	-	-	-	-	-	-	98.6
Burkina Faso	(12.0)	-	-	66.7	-	-	-	-	-	-	-	-	-	-	-	-	-	54.7
Burundi	-	-	-	138.8	-	-	-	-	(7.8)	-	-	-	-	-	-	-	-	132.0
Cambodia	-	-	-	453.7	-	-	-	-	-	-	-	2.0	-	-	-	-	-	455.7
Cameroon	-	-	-	-	-	-	-	-	-	-	-	483.0	-	-	-	-	-	483.0
Cape Verde	-	-	-	2.6	-	-	-	-	-	-	-	-	-	-	-	-	-	2.6
Caribbean Islands	-	-	-	12.8	-	-	-	-	-	-	-	-	-	-	-	-	-	12.8
Central African Republic	1.7	-	-	42.8	-	-	-	-	1	-	-	-	-	-	-	-	-	44.6
Central America	-	-	-	1.5	-	-	-	-	-	-	-	-	-	-	-	-	-	1.5
Chad	-	-	-	12.0	117.0	-	-	-	-	-	-	-	-	-	-	-	-	129.0
Chile	-	-	-	-	2.0	-	-	-	1	-	-	-	-	-	-	-	-	2.1
China	-	-	-	6.8	-	-	-	-	-	-	-	-	-	-	-	-	-	6.8
Comoros	-	-	-	2.4	-	-	-	-	-	-	-	-	-	-	-	-	-	2.4
Côte d'Ivoire	-	-	-	-	-	-	-	-	34.1	-	-	40.0	-	-	-	-	-	74.1
Croatia	-	-	-	100.0	-	-	-	-	-	-	-	-	-	-	-	-	-	100.0
Democratic People's Republic of Korea	-	-	-	6.6	-	-	-	-	-	-	-	-	-	-	-	-	-	6.6
Democratic Republic of Congo	-	-	-	-	-	-	-	-	-	-	-	52.0	-	-	-	-	-	52.0
Dominica	-	-	-	61.7	-	-	-	-	-	-	-	-	-	-	-	-	-	61.7
East Timor	-	-	-	-	-	-	-	-	-	-	52.0	-	-	-	-	-	-	52.0
Ecuador	-	-	-	149.2	-	-	-	-	425.1	-	-	-	-	-	-	-	-	574.3
Egypt	-	-	-	57.1	-	-	-	-	-	-	-	-	-	-	-	-	-	57.1
Equatorial Guinea	-	-	-	25.1	-	-	-	-	-	-	-	-	-	-	-	-	-	25.1
Eritrea	-	-	-	19.6	-	-	-	-	-	-	-	-	-	-	-	-	-	19.6
Estonia	-	-	(11.0)	-	-	-	-	-	-	-	-	-	-	-	-	-	-	(11.0)
Ethiopia	-	-	-	10.2	-	-	-	-	-	-	-	-	-	-	-	-	-	10.2
Fiji	-	-	-	9	-	-	-	-	-	-	-	-	-	-	-	-	-	9
Gabon	-	-	-	25.3	-	-	-	-	-	-	-	-	-	-	-	-	-	25.3
Gambia	-	-	-	168.1	208.0	-	-	-	190.9	-	-	-	-	-	-	-	-	567.0
Georgia	-	-	-	289.7	-	-	-	-	-	-	-	-	-	-	-	-	-	289.7
Germany	-	-	-	346.2	-	-	-	-	-	-	-	-	-	-	-	-	-	346.2
Ghana	-	-	-	1.9	-	-	-	-	(7.7)	-	-	-	-	-	-	-	-	(5.8)
Grenada	-	-	-	31.0	-	-	-	-	-	-	-	-	-	-	-	-	-	31.0
Guatemala	-	-	-	43.9	-	-	-	-	-	-	-	-	-	-	-	-	-	43.9
Guinea	-	-	-	16.1	13.0	-	-	-	3.0	-	-	-	-	-	-	-	-	32.1
Guinea-Bissau	-	-	-	34.3	-	-	-	-	196.6	-	-	-	-	94.6	-	-	-	325.7
Guyana	-	-	-	47.2	-	-	-	-	-	-	-	-	-	-	-	-	-	47.2
Haiti	-	-	-	2.9	-	-	-	-	(51.6)	-	-	-	-	-	-	-	-	(48.7)
Honduras	-	-	-	1.0	-	-	-	-	-	-	-	-	-	-	-	-	-	1.0
India	-	-	-	15.0	-	-	-	-	-	-	-	-	-	39.7	-	-	-	54.7

Table 5 (continued)

Country or area	United Nations	UNCHS	UNCTAD	UNV	UNESCO	UNRWA	ECA	ESCWA	FAO	IAEA	ICAO	ILO	IMO	ITC	ITU	UPLU	WIPO	TOTAL
Indonesia				46.5														46.5
Iran		401.8							62.0									463.8
Jamaica				14.1														14.1
Japan				150.2														150.2
Jordan									49.5									49.5
Kazakhstan				113.5	31.0													144.5
Kenya				24.6														24.6
Kiribati				5.0														5.0
Kyrgyzstan				130.1														130.1
Lao People's Democratic Republic				434.8														434.8
Latvia			36.0															36.0
Lesotho				81.1														81.1
Liberia				9.0					(20.2)									(11.2)
Lithuania			(20.0)															(20.0)
Madagascar				24.4					50.2									74.6
Malawi				113.2														113.2
Maldives				12.5														12.5
Mali				26.8	17.0													43.8
Marshall Islands				9.6														9.6
Mauritania				4.1	12.0													16.1
Micronesia (Federated States of)				5.0														5.0
Mongolia				(6.8)														(6.8)
Montserrat				1.3														1.3
Morocco					19.0													19.0
Mozambique				156.6					911.3									1068.1
Namibia				22.5														22.5
Nepal			6.0	100.4								29.0						135.4
Nicaragua				.3														.3
Niger				182.4								294.0						476.4
Nigeria				116.4														116.4
Pakistan									18.2									18.2
Papua New Guinea				18.5														18.5
Peru				179.0					6.6									185.6
Philippines				(1.2)								30.0						28.8
Republic of Korea				24.5														24.5
Romania			22.0															22.0
Russian Federation				1.3								37.0						38.3
Rwanda				439.9	160.0													599.9
Saint Vincent and the Grenadines				9.3														9.3
Samoa				2.5														2.5
Sao Tome and Principe				3.6														3.6
Senegal				50.6	31.0													81.6
Sierra Leone				.6	116.0							73.0						195.8
Slovakia			1.0						6.2									1.0
Somalia		252.1	4.0	25.5					471.2									752.8
South Africa				71.5														71.5
South Pacific				4.6														4.6
Sri Lanka				6.4														6.4
Sudan			24.0	20.9														44.9
Suriname				3.6														3.6

Table 5 (continued)

Country or area	United Nations	UNCHS	UNCTAD	UNV	UNESCO	UNRWA	ECA	ESCWA	FAO	IAEA	ICAO	ILO	IMO	ITC	ITU	UPU	WIPO	TOTAL
Swaziland	-	-	-	8.6	-	-	-	-	-	-	-	-	-	-	-	-	-	8.6
Syrian Arab Republic	-	-	-	(3.6)	-	-	-	-	-	-	-	-	-	-	-	-	-	(3.6)
Tajikistan	-	-	-	2.4	-	-	-	-	-	-	-	-	-	-	-	-	-	2.4
Thailand	-	-	-	-	-	-	-	-	20.4	-	-	-	-	-	-	-	-	20.4
Togo	-	-	-	-	-	-	-	-	(3.6)	-	-	-	-	-	-	-	-	(3.6)
Trust Territory of the Pacific Islands	-	-	-	8.5	-	-	-	-	-	-	-	-	-	-	-	-	-	8.5
Turkey	-	-	-	1.2	-	-	-	-	-	-	-	91.0	-	40.8	-	-	-	133.0
Turks and Caicos Islands	-	-	-	41.6	-	-	-	-	-	-	-	-	-	-	-	-	-	41.6
Tuvalu	-	-	-	.8	-	-	-	-	-	-	-	-	-	-	-	-	-	.8
Uganda	-	-	-	41.3	-	-	-	-	19.6	-	-	-	-	-	-	-	-	60.9
Ukraine	-	-	-	-	-	-	-	-	-	-	-	16.0	-	-	-	-	-	16.0
United Republic of Tanzania	-	-	2.0	57.5	-	-	-	-	28.0	-	-	105.0	-	-	-	-	-	192.5
Uzbekistan	-	-	-	2.5	121.0	-	-	-	-	-	-	-	-	-	-	-	-	123.5
Viet Nam	-	-	-	208.1	-	-	-	-	-	-	-	-	-	-	-	-	-	208.1
West Bank and Gaza	-	-	-	151.7	-	-	-	-	-	-	-	416.0	-	-	-	-	-	567.7
Yemen	-	-	-	99.5	-	-	-	-	-	-	-	-	-	-	-	-	-	99.5
Yugoslavia <sup>b/</sup>	-	-	-	81.1	-	-	-	-	108.0	-	-	-	-	-	-	-	-	189.1
Zambia	-	-	-	24.9	-	-	-	-	16.4	-	-	-	-	-	-	-	-	41.3
Zimbabwe	-	-	-	8.3	-	-	-	-	-	-	-	-	-	-	-	-	-	8.3
Others <sup>c/</sup>	-	-	-	-	-	-	-	-	-	-	-	-	-	-	-	-	380.2	380.2
Total (All countries)	(10.3)	743.3	229.0	6 530.9	865.0	-	-	-	2 969.5	2.6	344.0	1 678.0	-	175.3	-	-	380.2	13 957.5
Regional Africa	-	1.9	513.0	450.5	109.0	-	39.0	-	651.3	15.2	-	-	-	-	-	-	49.0	1 628.9
Regional Arab States	-	-	-	-	12.0	286 668.4	-	5.2	128.2	-	-	16.0	-	-	-	-	31.0	286 668.8
Regional Asia and the Pacific	-	-	-	196.9	-	-	-	-	1 575.4	-	-	-	-	3.4	-	-	.0	1 777.7
Regional Europe	-	-	-	115.9	-	-	-	-	-	5.9	-	11.0	-	-	-	-	.0	132.8
Regional Latin America and the Caribbean	-	45.5	-	522.0	51.0	-	-	-	132.3	-	184.0	191.0	-	-	-	11.0	-	1 136.8
Interregional <sup>d/</sup>	-	-	100.0	4 476.3	7.0	-	-	-	5 856.5	-	-	-	-	-	-	-	-	10 921.0
Global	-	(1.5)	-	6 621.7	-	-	-	-	19.6	-	-	-	547.0	107.2	-	27.0	.0	6 785.2
Total (Intercountry)	-	45.9	613.0	12 385.3	179.0	286 668.4	39.0	5.2	8 163.3	21.1	184.0	218.0	547.0	110.6	125.3	118.0	-	309 423.2
GRAND TOTAL	(10.3)	780.2	842.0	18 918.2	1 074.0	286 668.4	39.0	5.2	11 152.8	23.7	528.0	1 896.0	547.0	265.9	125.3	118.0	380.2	323 380.8

a/ This table gives a detailed breakdown of total B2 (expenditures from non-United Nations system multilateral sources) in table 3 of this annex. All B2 expenditures are incurred by the executing and specialized agencies. That is, agency B1 = total B1 of table 3 - [UNFPA+WFP+UNICEF+UNDP].

b/ The amount under FAO represents expenditure for Kosovo.

c/ WIPO reported this expenditure under "Others" with no further breakdown.

d/ IMO reported combined expenditure for interregional and global activities.









Table 6 (continued)

Country or area	United Nations	UNCHS	UNCTAD	UNESCO	UNIDO	ECA	ECE	ECLAC	ESCAP	ESCWA	FAO	IAEA	ICAO	ILO	IMO	ITC	ITU	UPLU	WHO	WIPO	TOTAL	
Republic of Korea	-	-	-	2.0	14.0	-	-	-	-	-	-	17.0	-	-	-	-	-	-	-	-	19.0	
Republic of Moldova	-	-	-	-	5.0	-	-	-	-	-	-	-	-	-	-	17.1	7.0	-	-	-	38.1	
Romania	-	259.0	478.0	5.0	-	-	-	-	-	-	-	1.2	-	92.0	-	23.6	-	-	-	-	858.8	
Russian Federation	-	-	230.0	89.0	-	-	-	-	-	-	148.9	-	-	121.0	-	-	-	-	14.0	180.7	828.6	
Rwanda	-	-	47.0	301.0	-	-	-	-	-	-	731.2	-	-	31.0	-	-	-	-	-	-	1110.2	
Saint Lucia	-	58.0	-	-	-	-	-	-	-	-	-	-	-	-	-	-	-	-	-	-	58.0	
Samoa	-	-	-	-	-	-	-	-	-	-	68.7	-	-	-	-	-	-	-	65.0	-	133.7	
Sao Tome and Principe	-	-	-	-	-	-	-	-	-	-	-	-	-	-	-	-	-	-	4.0	-	4.0	
Saudi Arabia	-	-	-	20.0	-	-	-	-	-	-	-	-	-	-	-	-	-	-	99.0	-	119.0	
Senegal	-	-	173.0	258.0	-	-	-	-	-	-	3 531.4	15.1	-	329.0	-	103.4	-	-	1.0	-	4 410.0	
Sierra Leone	-	-	-	-	-	-	-	-	-	-	329.0	-	-	-	-	-	-	-	-	-	329.0	
Slovenia	-	-	-	82.0	-	-	-	-	-	-	-	-	-	-	-	-	-	3.0	-	-	85.0	
Slovenia	-	-	-	-	-	-	-	-	-	-	-	6	-	-	-	-	-	-	-	8	1.7	
Solomon Islands	-	-	3.0	(9.0)	-	-	-	-	-	-	-	-	-	-	-	-	-	-	-	-	(6.0)	
Somalia	244.7	18.7	-	279.0	-	-	-	-	-	-	438.4	-	-	-	-	-	-	-	-	-	978.8	
South Africa	-	-	-	92.0	-	-	-	-	-	-	-	90.1	-	785.0	-	62.9	-	-	33.0	-	1 043.0	
Spain	-	-	-	-	-	-	-	-	-	-	-	-	-	-	-	-	-	-	-	66.8	66.8	
Sri Lanka	-	2.0	34.0	588.0	-	-	-	-	-	-	36.0	-	-	491.0	-	-	-	-	-	-	151.0	
Sudan	82.5	-	-	-	-	-	-	-	-	-	562.2	17.2	-	-	-	-	-	-	23.0	-	684.9	
Suriname	-	-	10.0	-	-	-	-	-	-	-	207.9	-	-	-	-	-	-	-	-	-	217.9	
Sweden	-	-	-	-	-	-	-	-	-	-	-	-	-	-	-	-	-	-	-	171.8	171.8	
Switzerland	-	-	-	-	-	-	-	-	-	-	-	-	-	-	-	-	-	-	-	93.6	93.6	
Syrian Arab Republic	84.5	-	14.0	-	-	-	-	-	-	-	1 586.4	12.7	-	-	-	-	-	-	32.0	-	1 732.6	
Tajikistan	-	-	10.0	-	-	-	-	-	-	-	436.1	-	-	-	-	-	-	-	-	-	446.1	
Thailand	145.8	(51.2)	69.0	203.0	-	-	-	-	-	-	-	-	7.5	771.0	-	-	-	-	13.0	-	1 158.1	
The former Yugoslav Republic of Macedonia	-	-	12.0	89.0	-	-	-	-	-	-	3.9	-	-	-	-	-	-	-	173.0	-	191.0	
Togo	-	-	-	-	-	-	-	-	-	-	-	-	-	-	-	-	-	-	-	-	101.0	
Tonga	-	-	6.0	-	-	-	-	-	-	-	-	-	-	-	-	-	-	-	-	-	6.0	
Trinidad and Tobago	-	-	-	-	-	-	-	-	-	-	-	-	-	106.0	-	-	-	-	-	-	106.0	
Tunisia	136.0	-	10.0	111.0	-	-	-	-	-	-	375.6	-	-	-	-	-	-	-	-	-	632.6	
Turkey	-	-	-	-	-	-	-	-	-	-	-	-	-	410.0	-	-	-	-	(2.0)	-	425.7	
Turkey	-	-	-	5.0	1 165.0	-	-	-	-	-	597.9	12.7	-	922.0	-	465.5	-	-	75.0	-	3 123.8	
Uganda	(131.6)	56.0	35.0	1 165.0	-	-	-	-	-	-	597.9	-	-	922.0	-	465.5	-	-	75.0	-	3 123.8	
Ukraine	-	-	160.0	79.0	-	-	-	-	-	-	-	783.2	-	189.0	-	-	-	-	-	-	1 171.2	
United Kingdom	-	-	-	-	-	-	-	-	-	-	-	-	-	-	-	-	-	-	-	53.9	53.9	
United Republic of Tanzania	(117.7)	67.0	75.0	571.0	-	-	-	-	-	-	594.9	-	-	1 079.0	-	207.9	-	-	115.0	-	2 562.1	
United States	-	-	-	-	-	-	-	79.6	-	-	-	16.2	-	66.0	-	-	-	-	-	90.4	90.4	
Uruguay	-	-	-	-	-	-	-	-	-	-	-	-	-	-	-	-	-	-	-	5.3	106.1	
Uzbekistan	-	-	125.0	21.0	-	-	-	-	-	-	-	-	-	-	-	-	-	-	-	-	146.0	
Vanuatu	-	8.0	4.0	-	-	-	-	-	-	-	-	-	-	-	-	-	-	-	-	-	12.0	
Venezuela	-	-	40.0	-	-	-	-	-	-	-	-	-	-	-	-	-	-	-	-	244.2	284.2	
West Bank	184.5	34.8	80.0	588.0	-	-	-	-	-	-	940.3	116.8	-	828.0	-	33.2	-	4.0	-	-	3 219.8	
West Bank and Gaza	300.7	-	80.0	261.0	-	-	-	-	-	-	-	20.7	-	362.0	-	-	-	-	-	-	1 084.4	
Yemen	-	-	6.0	-	-	-	-	-	-	-	1 219.8	3.8	-	-	-	-	-	-	19.0	-	1 248.6	
Yugoslavia	-	1 351.0	49.0	-	-	-	-	-	-	-	8 035.7	-	-	-	-	-	-	-	-	-	9 435.7	
Zambia	58.1	-	10.0	86.0	-	-	-	-	-	-	848.0	5	-	240.0	-	-	-	-	3.0	-	1 152.6	
Zimbabwe	-	-	317.0	436.0	-	-	-	-	-	-	5	-	-	451.0	-	-	-	-	288.0	-	1 493.5	
Others	-	-	-	-	-	-	-	-	-	-	-	-	-	-	-	-	-	-	119.8	-	139.9	
Total (All countries)	3 939.1	1 026.3	1 456.0	17 698.0	14 400.0	-	-	3 478.7	-	-	57 480.3	2 172.8	327.0	23 982.0	-	2 021.5	-	84.0	14 440.0	3 802.0	146 615.5	
Regional Africa	263.2	78.0	930.0	3 862.0	1 357.0	1 741.0	-	-	-	-	4 946.7	311.5	75.0	6 576.0	-	1 527.7	-	28.0	14 708.0	-	35 268.2	
Regional Arab States	802.6	-	-	2 328.0	(3.0)	-	-	-	-	110.0	-	2 438.2	-	5 507.0	-	-	-	-	224.0	-	6 596.8	
Regional Asia and the Pacific	316.5	7	1 884.0	4 288.0	806.0	-	4 420.8	-	7 734.0	-	6 838.9	634.6	496.0	5 507.0	-	93.0	-	6.0	2 009.0	-	34 005.5	
Regional Europe	-	-	6.0	1 717.0	236.0	-	-	-	-	-	-	376.8	-	513.0	-	-	-	-	71.0	842.0	-	3 854.6
Regional Latin America and the Caribbean	850.8	316.4	4.0	1 321.0	(4.0)	-	-	4 191.7	-	-	2 357.8	271.8	(1.0)	8 105.0	-	128.8	-	53.0	232.0	-	17 626.9	
Interregional	18 472.4	-	7 560.0	8 087.0	283.0	-	-	-	-	-	26 570.6	210.1	-	16 884.0	6 063.0	6 623.8	-	-	-	-	89 673.9	
Global	-	4 324.4	-	12 027.0	10 298.0	-	-	-	-	-	-	-	-	-	-	-	-	80.4	-	37 615.0	-	94 633.8
Total (Intercountry)	20 225.9	4 717.6	10 193.0	33 440.0	12 963.0	1 741.0	4 420.8	4 191.7	7 734.0	110.0	43 151.2	1 806.4	572.0	36 485.0	6 063.0	7 464.0	80.4	157.0	55 928.0	-	251 452.4	
GRAND TOTAL	24 163.8	5 742.9	11 948.0	51 438.0	27 383.0	1 741.0	4 420.8	7 870.4	7 734.0	110.0	100 641.4	3 978.9	620.0	80 487.0	6 063.0	9 485.5	80.4	241.0	70 368.0	3 802.0	388 067.9	

a/ This table gives a detailed breakdown of total C1 expenditures as given in table 3 of this annex. C1 expenditures, based on contributions from bilateral sources, are specific to the executing and specialized agencies; no other entity in the United Nations system has C1 expenditures.

b/ The amount under FAO represents expenditure for Kosovo.

c/ The amount under WHO represents expenditure for "newly Independent States". WIPO reported this amount under "Others" with no further breakdown.

d/ IMO and WHO reported combined expenditure for Interregional and global activities.







**Table 8. United Nations system: a detailed view of total technical cooperation assistance delivered, 2000**  
(in thousands of United States dollars)

Country or area	Agency regular budgets a/	Agency extra-budgetary b/	Self-supporting expenditures	Total agency	UNFPA	UNICEF	WFP c/	UNDP central funds d/	UNDP-administered funds e/	Total UNDP	GRAND TOTAL
Afghanistan	3 361.4	555.9	4 912.0	8 829.3	754.9	13 543.7	62 491.1	8 475.0	2 631.0	11 106.0	96 725.1
Albania	445.2	752.8	1 556.0	2 754.0	220.5	5 758.8	1.0	4 260.0	761.0	5 021.0	13 755.2
Algeria	2 167.2	840.1	144.1	3 151.5	425.1	877.6	4 312.4	912.0	280.0	1 192.0	9 958.5
Andorra	87.5	-	-	87.5	-	-	-	-	-	-	87.5
Angola	1 978.6	2 309.3	4 457.0	8 744.9	1 312.9	13 762.3	108 492.8	2 763.0	3 543.0	6 306.0	138 618.9
Anguilla	-	6.6	-	6.6	-	-	-	10.0	7.0	17.0	23.6
Antigua and Barbuda	171.8	-	-	171.8	-	-	-	76.0	242.0	318.0	489.8
Argentina	2 126.1	3 098.9	23 516.3	28 741.3	(0.2)	2 815.2	-	179 021.0	1 919.0	180 940.0	212 496.3
Armenia	488.7	114.4	1.0	604.1	107.7	930.3	5 417.2	1 315.0	(374.0)	941.0	8 000.3
Aruba	88.0	-	-	88.0	-	-	-	179.0	-	179.0	267.0
Australia	99.0	14.6	-	113.6	-	-	-	-	-	-	113.6
Austria	70.0	101.1	-	171.1	-	-	-	-	-	-	171.1
Azerbaijan	370.3	160.9	287.0	818.2	620.2	1 680.1	3 514.7	3 983.0	500.0	4 483.0	11 116.3
Bahamas	329.5	-	41.0	370.5	-	-	-	-	76.0	76.0	446.5
Bahrain	126.5	57.0	22.0	205.5	.9	-	-	1 029.0	288.0	1 317.0	1 523.4
Baïlic countries	-	-	-	-	-	7 534.4	-	(53.0)	-	(53.0)	7 481.4
Bangladesh	5 483.0	1 762.8	3 569.1	10 814.9	3 679.6	34 770.6	23 134.9	19 601.0	335.0	19 936.0	92 336.0
Barbados	353.6	-	11.0	364.6	-	-	-	14.0	14.0	28.0	392.6
Belarus	835.4	-	-	835.4	98.2	(6.7)	-	934.0	70.0	1 004.0	1 930.9
Belgium	68.0	1.0	-	69.0	-	-	-	-	-	-	69.0
Belize	571.2	10.0	-	581.2	22.4	628.7	45.1	33.0	1 156.0	1 189.0	2 466.5
Benin	1 873.1	605.4	146.8	2 625.3	715.2	2 769.3	1 977.7	3 327.0	1 200.0	4 527.0	12 614.5
Bhutan	1 774.7	218.6	173.3	2 166.7	1 431.4	2 076.6	1 622.8	3 407.0	1 542.0	4 949.0	12 246.6
Bolivia	1 673.7	2 567.8	2 591.4	6 832.9	1 108.0	7 748.2	6 255.2	9 366.0	2 111.0	11 477.0	33 421.4
Bosnia and Herzegovina	325.0	1 950.2	230.0	2 505.2	129.2	6 070.7	-	4 478.0	2 611.0	7 089.0	15 794.0
Botswana	1 745.0	147.6	90.2	1 982.8	350.2	1 066.5	-	3 555.0	485.0	4 040.0	7 439.4
Brazil	3 131.5	6 015.7	90 153.8	99 300.9	847.2	8 048.4	-	186 244.0	8 132.0	194 376.0	302 572.6
British Virgin Islands	98.0	-	-	98.0	-	-	-	(7.0)	-	(7.0)	91.0
Brunei Darussalam	14.0	-	-	14.0	-	-	-	-	-	-	14.0
Bulgaria	743.1	346.3	19.0	1 108.4	74.4	-	-	14 178.0	373.0	14 551.0	15 733.8
Burkina Faso	2 624.3	893.9	1 087.0	4 605.2	1 128.9	5 974.7	1 000.4	4 226.0	1 357.0	5 583.0	18 292.2
Burundi	2 897.2	2 549.0	68.6	5 514.7	674.0	6 598.2	4 186.0	6 400.0	1 413.0	7 813.0	24 785.8
Cambodia	2 628.2	5 786.0	2 542.9	10 957.1	3 231.2	12 379.7	23 679.3	4 598.0	16 053.0	20 651.0	70 898.3
Cameroon	1 826.3	788.0	614.0	3 228.3	1 509.8	2 590.9	406.1	1 098.0	(22.0)	1 076.0	8 811.0
Canada	70.0	36.4	-	106.4	-	-	-	-	-	-	106.4
Cape Verde	1 782.5	1 311.6	172.7	3 266.8	328.6	766.9	893.2	583.0	760.0	1 343.0	6 598.4
Caribbean Islands	1 852.0	64.8	-	1 916.8	878.3	1 795.9	-	667.0	-	667.0	5 258.0
Cayman Islands	-	-	-	-	-	-	-	73.0	-	73.0	73.0
Central African Republic	1 950.8	89.6	112.0	2 152.4	739.7	1 715.9	1 634.5	1 961.0	1 717.0	3 678.0	9 920.5
Central America	-	330.5	-	330.5	-	394.0	-	28.0	82.0	110.0	834.5
Central and Eastern European countries	973.0	-	14 235.0	15 208.0	-	-	-	-	-	-	15 208.0
Chad	2 214.5	166.0	587.0	2 967.5	1 029.1	4 015.8	3 895.9	5 236.0	878.0	6 114.0	18 022.3
Chile	1 437.7	985.1	388.9	2 811.7	62.2	1 002.5	-	18 598.0	726.0	19 324.0	23 200.4
China	5 460.7	12 453.4	4 322.6	22 236.8	3 497.5	23 796.5	13 938.3	22 875.0	17 641.0	40 516.0	103 985.1
Colombia	2 646.9	1 109.2	397.4	4 153.5	340.3	3 222.6	4 145.6	83 981.0	1 248.0	85 229.0	97 091.0
Commonwealth of Independent States	-	-	-	-	43.7	-	-	-	-	-	43.7
Comoros	1 468.8	1.4	40.0	1 510.2	86.3	659.1	7.0	557.0	328.0	885.0	3 147.6
Congo	2 510.3	826.9	95.0	3 432.2	235.2	3 199.0	5 361.3	1 001.0	178.0	1 179.0	13 406.6
Cook Islands	359.7	-	-	359.7	55.4	-	-	140.0	47.0	187.0	602.2
Costa Rica	1 500.6	800.8	416.0	2 717.4	160.1	692.5	-	3 495.0	1 537.0	5 032.0	8 602.0

Table 8 (continued)

Country or area	Agency regular budgets	Agency extra-budgetary	Self-supporting expenditures	Total agency	UNFPA	UNICEF	WFP	UNDP central funds	UNDP-administered funds	Total UNDP	GRAND TOTAL
Côte d'Ivoire	1 703.6	772.3	1 076.0	3 551.9	1 070.7	3 202.8	1 485.2	1 502.0	4 035.0	5 537.0	14 847.7
Croatia	424.6	527.2	(43.0)	908.8	-	998.4	-	113.0	2 593.0	2 706.0	4 613.2
Cuba	1 622.5	1 177.3	17.0	2 816.8	269.4	1 439.2	2 867.8	1 110.0	1 752.0	2 862.0	10 255.1
Cyprus	168.6	14.0	76.0	258.6	-	-	-	6 610.0	-	6 610.0	6 868.6
Czech Republic	475.8	(5.0)	113.2	584.0	-	-	-	346.0	304.0	650.0	1 234.0
Democratic People's Republic of Korea	2 233.5	3 442.7	1 886.0	7 562.1	353.9	4 126.5	123 069.3	1 783.0	310.0	2 093.0	137 204.7
Democratic Republic of the Congo	3 171.1	2 234.1	6 413.5	11 818.7	645.9	29 143.1	22 685.3	3 242.0	173.0	3 415.0	67 708.0
Denmark	85.0	13.6	-	98.6	-	-	-	-	-	-	98.6
Djibouti	1 221.1	25.0	8.0	1 254.1	276.8	939.7	5 979.3	764.0	75.0	839.0	9 289.0
Dominica	277.2	62.0	37.0	376.2	-	-	-	81.0	68.0	149.0	525.2
Dominican Republic	1 549.2	237.1	6 325.0	8 111.3	579.8	1 610.0	1 107.6	10 581.0	774.0	11 355.0	22 763.7
East Timor	-	1 306.1	1 583.0	2 889.1	326.0	8 580.0	23 270.3	1 945.0	-	1 945.0	37 010.5
Ecuador	2 051.7	2 488.8	323.5	4 863.9	622.2	3 604.2	2 627.9	16 001.0	1 301.0	17 302.0	29 020.2
Egypt	2 083.3	1 420.5	727.0	4 230.8	1 899.2	6 565.3	9 130.6	16 148.0	2 729.0	18 877.0	40 723.0
El Salvador	1 333.8	1 152.8	28.0	2 514.6	560.9	2 761.8	874.3	17 077.0	2 976.0	20 053.0	26 764.6
Equatorial Guinea	1 362.6	39.1	9.0	1 410.7	508.0	978.8	-	924.0	62.0	986.0	3 883.5
Eritrea	2 317.1	1 314.8	163.0	3 794.9	636.7	10 357.0	41 433.9	2 455.0	1 861.0	4 316.0	60 538.5
Estonia	126.5	42.0	2.0	170.5	24.7	-	-	296.0	2 072.0	2 368.0	2 563.2
Ethiopia	4 442.6	3 081.7	6 830.2	14 354.5	2 955.6	33 108.0	236 952.9	20 326.0	2 226.0	22 552.0	309 923.0
Fiji	1 653.1	230.2	1.0	1 884.3	108.7	-	-	274.0	108.0	382.0	2 375.0
Finland	70.0	37.0	-	107.0	-	-	-	-	-	-	107.0
France	70.0	340.4	-	410.4	-	-	-	-	-	-	410.4
French Guiana	19.0	-	-	19.0	-	-	-	-	-	-	19.0
Gabon	1 433.6	78.3	104.0	1 615.9	161.5	720.9	588.2	804.0	245.0	1 049.0	4 135.6
Gambia	2 054.1	753.0	103.0	2 910.0	370.8	1 231.9	1 562.0	1 702.0	1 265.0	2 967.0	9 041.6
Georgia	781.2	1 494.1	(3.0)	2 272.3	80.3	1 727.7	4 380.1	4 463.0	790.0	5 253.0	13 713.4
Germany	65.0	446.6	-	511.6	-	-	-	-	-	-	511.6
Ghana	2 573.0	1 498.2	736.0	4 807.2	1 800.0	6 698.8	1 549.2	5 388.0	855.0	6 243.0	21 098.3
Greece	220.8	-	142.4	363.2	-	-	-	-	-	-	363.2
Grenada	163.8	31.0	13.0	207.8	-	-	-	62.0	124.0	186.0	393.8
Guam	5.0	-	-	5.0	-	-	-	-	-	-	5.0
Guatemala	1 160.1	3 646.2	176.0	4 982.3	266.9	3 757.1	3 076.4	29 847.0	5 182.0	35 029.0	47 111.7
Guinea	2 199.7	136.1	144.0	2 479.9	564.5	4 104.1	996.4	1 680.0	763.0	2 443.0	10 587.9
Guinea-Bissau	1 697.1	1 053.4	131.0	2 881.5	195.0	2 299.6	1 181.3	1 147.0	(264.0)	883.0	7 440.4
Guyana	726.6	69.2	13.0	808.8	281.9	955.9	45.9	1 866.0	410.0	2 276.0	4 368.6
Haiti	620.1	1 404.3	90.0	2 114.4	1 198.4	4 519.4	6 068.4	4 434.0	1 597.0	6 031.0	19 931.6
Honduras	780.7	4 250.4	997.4	6 028.6	758.6	2 385.3	978.4	36 671.0	7 832.0	44 503.0	54 653.9
Hong Kong, China	106.0	-	-	106.0	-	-	-	-	-	-	106.0
Hungary	379.4	250.0	-	629.4	-	-	-	131.0	-	131.0	760.4
Iceland	51.0	-	-	51.0	-	-	-	-	-	-	51.0
India	9 023.5	4 920.0	22 548.4	36 491.9	8 974.0	85 506.8	29 967.5	22 028.0	9 206.0	31 234.0	192 174.2
Indonesia	6 832.9	2 326.6	3 389.0	12 348.5	2 504.7	19 346.4	57 899.4	4 658.0	6 799.0	11 457.0	103 556.0
Iran (Islamic Republic of)	2 222.4	1 805.3	183.9	4 211.6	1 135.3	2 309.5	1 042.7	1 536.0	2 141.0	3 677.0	12 376.1
Iraq	1 564.6	198 870.1	1 274.0	201 708.7	326.2	6 886.3	20 078.4	926.0	87 837.0	88 763.0	317 762.6
Ireland	31.6	-	-	31.6	-	-	-	-	-	-	31.6
Israel	372.6	3.1	-	375.6	-	-	-	-	-	-	375.6
Italy	60.0	2 675.0	20.0	2 755.0	-	-	-	-	-	-	2 755.0
Jamaica	2 003.1	72.1	-	2 075.2	196.7	1 051.8	-	921.0	192.0	1 113.0	4 436.8
Japan	86.0	1 473.6	57.0	1 616.6	-	-	-	-	-	-	1 616.6
Jordan	1 102.7	1 473.6	4.0	2 580.2	437.5	1 158.1	3 728.4	1 604.0	2 217.0	3 821.0	11 725.3



Table 8 (continued)

Country or area	Agency regular budgets a/	Agency extra-budgetary b/	Self-supporting expenditures	Total agency	UNFPA	UNICEF	WFP c/	UNDP central funds d/	UNDP-administered funds e/	Total UNDP	GRAND TOTAL
Kazakhstan	784.4	381.7	365.7	1 531.8	784.9	761.1	-	1 735.0	656.0	2 391.0	5 468.8
Kenya	2 259.9	871.1	2 200.0	5 331.0	1 855.2	8 407.0	115 714.3	5 337.0	1 542.0	6 879.0	138 186.5
Kiribati	565.0	(0.5)	-	564.5	72.2	-	-	402.0	121.0	523.0	1 159.7
Kuwait	205.0	-	47.0	252.0	-	95.3	-	2 328.0	-	2 328.0	2 675.3
Kyrgyzstan	308.4	198.1	84.8	591.3	433.7	906.5	-	2 111.0	827.0	2 938.0	4 869.6
Lao People's Democratic Republic	1 740.9	1 219.9	183.0	3 143.8	1 431.7	4 865.9	1 368.8	6 438.0	10 905.0	17 341.0	28 151.2
Latvia	335.9	36.0	126.0	497.9	51.1	-	-	1 767.0	509.0	2 276.0	2 825.0
Lebanon	1 990.7	1 632.0	424.1	4 046.8	261.2	1 905.1	-	5 501.0	1 525.0	7 026.0	13 239.1
Lesotho	1 334.2	412.1	27.0	1 773.3	183.4	848.6	1 191.6	1 194.0	300.0	1 494.0	5 490.9
Liberia	2 389.9	.1	376.0	2 766.0	739.7	4 528.8	37 710.5	4 325.0	105.0	4 430.0	50 175.0
Libyan Arab Jamahiriya	894.9	43.0	1 666.0	2 603.9	-	-	-	2 493.0	16.0	2 509.0	5 112.9
Lithuania	359.3	45.5	27.0	431.8	29.2	-	-	698.0	229.0	927.0	1 388.0
Luxembourg	20.0	-	75.0	95.0	-	-	-	-	-	-	95.0
Macau	10.0	-	-	10.0	-	-	-	-	-	-	10.0
Madagascar	2 467.9	1 492.7	517.8	4 478.3	1 395.5	10 187.4	6 251.1	6 053.0	2 066.0	8 119.0	30 431.3
Malawi	1 959.3	546.2	117.0	2 622.5	1 129.8	6 474.2	2 543.2	3 493.0	1 734.0	5 227.0	17 996.7
Malaysia	1 269.6	352.0	-	1 621.6	153.9	435.2	-	374.0	2 592.0	2 966.0	5 176.7
Maldives	1 670.8	12.5	120.0	1 803.3	576.3	599.2	-	1 048.0	214.0	1 262.0	4 240.7
Mali	2 408.0	1 372.0	512.0	4 291.9	810.0	8 000.7	3 295.3	2 323.0	5 271.0	7 594.0	23 991.9
Malta	111.4	20.0	1.0	132.4	-	-	-	53.0	-	53.0	185.4
Mariana Islands	53.0	-	-	53.0	-	-	-	-	-	-	53.0
Marshall Islands	143.6	211.6	-	355.2	104.7	-	-	95.0	30.0	125.0	584.9
Mauritania	2 481.6	657.9	507.7	3 647.2	721.9	3 041.4	2 260.0	2 042.0	3 513.0	5 555.0	15 225.5
Mauritius	862.2	75.6	86.9	1 024.7	87.5	630.9	-	531.0	99.0	629.0	2 372.1
Mexico	2 425.3	786.1	1 415.1	4 626.5	1 190.4	1 767.7	-	8 251.0	3 095.0	11 346.0	18 930.6
Micronesia (Federated States of)	268.0	6.0	77.0	351.0	57.5	-	-	257.0	100.0	357.0	765.5
Monaco	50.0	-	-	50.0	-	-	-	-	-	-	50.0
Mongolia	1 843.6	842.2	66.0	2 751.8	1 493.6	1 831.0	-	3 882.0	661.0	4 543.0	10 619.6
Montserrat	1.0	1.3	3.0	5.3	-	-	-	38.0	2.0	40.0	45.3
Morocco	1 994.4	2 543.5	463.5	5 001.4	1 267.9	1 517.2	2 188.8	3 465.0	512.0	3 977.0	13 952.4
Mozambique	2 212.5	7 145.2	942.9	10 300.5	3 407.8	21 877.1	31 023.7	18 600.0	8 743.0	27 343.0	93 952.1
Myanmar	5 435.1	468.2	1 173.0	7 076.3	820.7	11 217.4	1 865.3	14 938.0	-	14 938.0	35 917.7
Namibia	1 751.7	539.5	378.3	2 669.5	439.4	1 994.3	730.2	1 246.0	136.0	1 382.0	7 215.4
Nauru	90.7	-	-	90.7	-	-	-	-	-	-	90.7
Nepal	4 135.5	1 785.0	2 339.3	8 259.8	2 477.9	10 647.4	9 960.8	8 577.0	3 010.0	11 587.0	42 932.8
Netherlands	65.0	1.0	-	66.0	-	-	-	-	-	-	66.0
Netherlands Antilles	113.6	-	-	113.6	-	-	-	395.0	-	395.0	508.6
New Zealand	78.0	-	-	78.0	-	-	-	-	-	-	78.0
Nicaragua	1 161.8	1 821.4	340.8	3 324.0	1 197.9	3 032.4	12 657.3	8 260.0	3 962.0	12 222.0	32 433.6
Niger	2 582.8	1 014.1	2 510.0	6 106.9	984.5	7 859.9	3 301.9	5 889.0	1 141.0	7 030.0	25 283.3
Nigeria	3 269.1	1 514.0	11 131.0	15 914.2	3 683.9	31 555.5	-	6 542.0	1 701.0	8 243.0	59 396.6
Niue	102.0	21.0	-	123.0	-	-	-	123.0	84.0	207.0	330.0
Norway	70.0	54.4	-	124.4	-	-	-	-	-	-	124.4
Oman	946.7	72.0	595.2	1 613.9	9.5	805.2	-	-	-	-	2 428.7
Pacific multi-islands	-	-	-	-	518.7	1 807.0	-	7.0	137.0	144.0	2 469.7
Pakistan	3 790.2	2 164.5	10 340.0	16 294.7	651.8	22 288.1	5 112.1	5 231.0	1 670.0	6 901.0	51 227.7
Palau	151.5	-	-	151.5	-	-	-	-	-	-	151.5
Panama	999.5	39.9	487.0	1 526.4	212.7	904.1	-	94 849.0	976.0	95 825.0	98 468.2
Papua New Guinea	2 415.7	46.5	27.0	2 489.2	686.1	1 546.6	-	2 132.0	525.0	2 657.0	7 378.9
Paraguay	971.3	198.3	225.6	1 395.2	546.1	1 057.1	-	28 936.0	415.0	29 351.0	32 349.4

Table 8 (continued)

Country or area	Agency regular budgets a/	Agency extra-budgetary b/	Self-supporting expenditures	Total agency	UNFPA	UNICEF	WFP c/	UNDP central funds d/	UNDP-administered funds e/	Total UNDP	GRAND TOTAL
Peru	1 949.3	1 057.6	3 468.4	6 475.3	1 394.2	4 819.3	3 840.9	54 678.0	1 144.0	55 822.0	72 351.6
Philippines	1 028.8	3 322.2	2 297.9	6 648.9	997.1	8 115.0	-	4 170.0	2 228.0	6 398.0	22 158.9
Poland	1 668.5	90.7	-	1 759.1	113.3	-	-	1 864.0	431.0	2 295.0	4 167.4
Portugal	155.0	5.7	-	160.8	-	-	-	-	-	-	160.8
Puerto Rico	9.0	-	-	9.0	-	-	-	-	-	-	9.0
Qatar	146.3	297.0	-	443.3	-	-	-	29.0	-	29.0	472.3
Republic of Korea	1 621.1	43.5	125.0	1 789.6	-	-	-	864.0	-	864.0	2 653.6
Republic of Moldova	496.4	38.1	-	534.5	107.8	1 944.8	-	1 604.0	252.0	1 856.0	4 443.1
Reunion	35.0	-	-	35.0	-	-	-	-	-	-	35.0
Romania	510.5	1 813.8	143.0	2 467.3	279.8	1 445.9	-	1 052.0	49.0	1 101.0	5 294.0
Russian Federation	546.6	883.9	3 792.9	5 223.4	151.5	(1.9)	10 246.1	7 225.0	1 012.0	8 237.0	23 856.1
Rwanda	2 876.5	1 713.6	564.0	5 154.2	724.3	5 900.3	73 262.6	5 474.0	20 905.0	26 379.0	111 420.4
Saint Helena	-	-	-	-	-	-	-	259.0	-	259.0	259.0
Saint Kitts and Nevis	336.4	-	13.0	349.4	-	-	-	-	27.0	27.0	376.4
Saint Lucia	353.7	58.0	9.0	420.7	-	-	-	1.0	60.0	61.0	481.7
Saint Vincent and the Grenadines	162.6	9.3	-	171.9	-	-	-	38.0	58.0	96.0	267.9
Samoa	1 020.9	138.2	-	1 159.0	23.6	-	-	665.0	49.0	714.0	1 896.6
San Marino	58.0	-	-	58.0	-	-	-	-	-	-	58.0
Sao Tome and Principe	1 672.1	7.6	81.0	1 760.7	278.2	404.2	1 166.4	572.0	366.0	938.0	4 547.4
Saudi Arabia	840.1	119.0	9 086.4	10 045.6	-	-	-	3 033.0	-	3 033.0	13 078.6
Senegal	3 194.6	4 576.9	292.1	8 063.5	1 036.8	4 527.4	12 740.6	3 368.0	1 489.0	4 857.0	31 225.3
Seychelles	874.0	-	(2.0)	872.0	51.7	-	-	32.0	24.0	56.0	979.7
Sierra Leone	2 342.1	652.0	1 768.0	4 762.1	224.5	10 424.5	4 006.6	890.0	1.0	891.0	20 308.7
Singapore	316.0	-	17.0	333.0	-	-	-	-	-	-	333.0
Slovakia	600.5	86.0	82.0	768.5	-	-	-	464.0	55.0	519.0	1 287.5
Slovenia	363.6	1.7	-	365.2	-	-	-	45.0	23.0	68.0	432.2
Solomon Islands	636.5	(6.0)	150.0	780.5	58.5	-	-	570.0	-	570.0	1 409.0
Somalia	3 706.9	1 844.8	2 822.0	8 373.7	364.9	16 781.9	14 732.1	9 424.0	779.0	10 203.0	50 455.6
South Africa	2 754.4	1 114.5	221.6	4 090.5	334.3	3 209.5	-	3 476.0	567.0	4 043.0	11 677.4
South Pacific	-	4.6	-	4.6	-	-	-	-	5.0	5.0	9.6
Spain	65.0	65.8	-	130.8	-	-	-	-	-	-	130.8
Sri Lanka	3 348.3	1 226.4	545.0	5 119.7	553.7	3 848.2	3 925.1	6 488.0	1 251.0	7 739.0	21 185.7
Sudan	3 928.5	1 075.8	5 007.8	10 012.1	1 566.8	15 820.6	102 923.2	6 622.0	204.0	6 826.0	137 148.7
Suriname	539.5	221.7	34.0	795.2	572.7	178.8	-	293.0	2 627.0	2 920.0	4 466.7
Swaziland	1 557.4	8.8	64.0	1 630.2	198.5	732.1	-	929.0	207.0	1 136.0	3 696.8
Sweden	65.0	171.8	-	236.8	-	-	-	-	-	-	236.8
Switzerland	69.9	93.6	-	163.5	-	-	-	-	-	-	163.5
Syrian Arab Republic	2 408.2	3 072.0	508.0	5 988.2	944.3	1 064.1	5 951.9	1 273.0	1 873.0	3 146.0	17 094.6
Tajikistan	380.0	658.3	1 187.0	2 225.3	368.6	1 801.2	11 860.1	5 519.0	868.0	6 387.0	22 642.2
Thailand	5 091.1	1 508.5	151.2	6 750.8	569.7	3 059.5	288.7	2 019.0	1 378.0	3 397.0	14 065.7
The former Yugoslav Republic of Macedonia	431.1	538.0	779.0	1 748.1	(10.7)	5 078.7	-	1 875.0	399.0	2 274.0	9 090.0
Togo	1 503.0	173.3	203.0	1 879.3	493.2	1 629.3	-	2 829.0	1 241.0	4 070.0	8 071.8
Tokelau Islands	57.0	-	-	57.0	-	-	-	76.0	-	76.0	133.0
Tonga	794.0	6.0	-	800.0	46.3	-	-	124.0	-	124.0	970.4
Trinidad and Tobago	837.7	106.0	32.0	975.7	-	-	-	107.0	248.0	355.0	1 330.7
Trust Territory of the Pacific Islands	-	8.5	-	8.5	-	-	-	261.0	8.0	269.0	277.5
Tunisia	1 125.5	749.6	406.4	2 281.5	361.4	1 044.7	-	743.0	485.0	1 228.0	4 915.7
Turkey	863.8	1 510.7	331.0	2 705.5	501.9	11 155.8	-	2 327.0	2 404.0	4 731.0	19 094.2
Turkmenistan	110.0	-	27.0	137.0	426.3	943.3	-	1 231.0	88.0	1 319.0	2 825.6
Turks and Caicos Islands	39.0	41.6	-	80.6	-	-	-	363.0	42.0	405.0	485.6



Table 8 (continued)

Country or area	Agency regular budgets a/	Agency extra-budgetary b/	Self-supporting expenditures	Total agency	UNFPA	UNICEF	WFP c/	UNDP central funds d/	UNDP-administered funds e/	Total UNDP	GRAND TOTAL
Tuvalu	21.0	.8	-	21.8	35.1	-	-	165.0	1.0	166.0	222.9
Uganda	2 678.0	3 358.7	2 352.0	8 388.7	2 619.0	22 549.1	20 462.5	5 174.0	5 586.0	10 760.0	64 779.3
Ukraine	899.8	1 187.2	-	2 087.0	114.5	53.8	-	5 074.0	341.0	5 415.0	7 670.3
United Arab Emirates	98.0	-	755.0	853.0	7.7	-	-	3 954.0	10.0	3 964.0	4 824.7
United Kingdom	70.0	53.9	-	123.9	-	-	-	-	-	-	123.9
United Republic of Tanzania	3 021.5	2 784.6	2 676.2	8 482.3	2 387.7	22 442.6	4 597.9	10 305.0	3 209.0	13 514.0	51 424.5
United States	-	99.4	-	99.4	-	-	-	-	-	-	99.4
Uruguay	525.6	297.1	23.0	845.8	106.5	675.5	-	26 232.0	1 145.0	27 377.0	29 004.8
Uzbekistan	732.5	306.5	159.0	1 198.0	552.6	1 549.2	-	9 669.0	1 478.0	11 147.0	14 446.8
Vanuatu	1 048.5	12.0	1.0	1 061.5	78.7	-	-	111.0	-	111.0	1 251.2
Venezuela	2 017.4	903.2	179.9	3 100.5	322.0	4 069.8	635.2	38 659.0	3 814.0	42 473.0	50 600.5
Viet Nam	3 352.7	3 558.7	386.7	7 298.2	4 202.1	10 799.4	10 125.3	15 325.0	2 936.0	18 261.0	50 686.0
West Bank and Gaza	834.0	1 632.1	23.0	2 489.2	1 096.9	1 745.1	1 141.4	-	32 237.0	32 237.0	38 709.5
Yemen	2 405.8	1 360.1	2 076.0	5 841.9	1 823.9	5 063.3	7 196.8	9 827.0	1 976.0	11 803.0	31 728.9
Yugoslavia	386.3	9 641.8	1 136.0	11 164.2	68.7	11 609.5	67 551.5	3 856.0	6 098.0	9 954.0	100 347.9
Zambia	2 830.8	1 193.9	457.8	4 482.5	3 421.3	10 864.3	7 447.4	3 402.0	2 150.0	5 552.0	31 767.4
Zimbabwe	2 445.8	1 782.8	2 231.0	6 459.5	451.1	5 160.2	13.1	3 607.0	602.0	4 209.0	16 292.9
Others	1 844.9 g/	517.0 h/	1 813.0 i/	4 175.0	-	44 179.1 j/	392.3 k/	-	-	-	48 746.4
Unspecified	568.5 g/	-	-	568.5	-	-	8 312.5 j/	-	-	-	8 881.0
<b>Total (All countries)</b>	<b>274 202.2</b>	<b>386 955.8</b>	<b>301 153.9</b>	<b>962 311.9</b>	<b>116 478.9</b>	<b>849 037.0</b>	<b>1 491 034.6</b>	<b>1 354 256.0</b>	<b>386 008.0</b>	<b>1 740 264.0</b>	<b>5 159 126.4</b>
Regional Africa	41 093.4	38 974.8	164 559.4	244 627.7	2 896.8	5 232.9	-	22 346.0	12 191.0	34 537.0	287 294.3
Regional Arab States	25 177.0	293 889.8	8 513.0	327 579.8	665.6	852.3	-	3 281.0	2 647.0	5 928.0	335 025.7
Regional Asia and the Pacific	33 268.2	39 222.6	17 911.0	90 401.9	1 085.1	2 908.6	-	15 094.0	8 214.0	23 308.0	117 703.6
Regional Europe	22 453.7	7 786.3	15 965.8	46 205.8	566.5	585.6	-	2 680.0	4 939.0	7 619.0	54 976.8
Regional Latin America and the Caribbean	30 844.4	20 674.8	2 558.6	54 077.8	1 158.8	1 353.4	-	4 176.0	6 204.0	10 380.0	66 970.0
Interregional	11 234.7	101 972.1	346.3	113 553.1	11 280.6	-	-	11 928.0	10 426.0	22 354.0	147 187.7
Global	31 301.4	74 821.2	78 013.7	184 136.3	-	25 014.3	-	39 681.0	29 159.0	68 840.0	277 990.6
<b>Total (Intercountry)</b>	<b>195 372.8</b>	<b>577 341.8</b>	<b>287 867.8</b>	<b>1 060 582.3</b>	<b>17 653.4</b>	<b>35 947.1</b>	<b>-</b>	<b>99 186.0</b>	<b>73 780.0</b>	<b>172 966.0</b>	<b>1 287 148.8</b>
GCCC k/	-	-	-	-	-	-	-	4 469.0	-	4 469.0	4 469.0
<b>GRAND TOTAL</b>	<b>469 575.0</b>	<b>964 297.6</b>	<b>589 021.6</b>	<b>2 022 894.2</b>	<b>134 132.3</b>	<b>884 984.0</b>	<b>1 491 034.6</b>	<b>1 457 911.0</b>	<b>459 788.0</b>	<b>1 917 699.0</b>	<b>6 450 744.2</b>

a/ Comprising data contained in table 4.

b/ Comprising the sum of the total amounts contained in tables 5-7 less the amounts reported by UNFPA, UNICEF, WFP. Note that the total amount in this column is not the same as the total amount in the column entitled "Funded by extrabudgetary sources other than UNDP, UNDP-administered funds, UNFPA, UNICEF, WFP" of tables 1 and 2 since it excludes self-supporting expenditures.

c/ Includes expenditures against WFP general resources and special trust funds in support of programmes and projects of developing countries. Excludes administrative and other support costs.

d/ Including expenditures against IPF, SPR, SMF/LDC, SIS, cost-sharing and trust funds established by the Administrator, where applicable.

e/ The table showing breakdown by agency may be obtained on request from UNDP.

f/ On 1 July 1997, Hong Kong became a Special Administrative Region of China.

g/ For agency breakdown of this amount, refer to table 4.

h/ For agency breakdown of this amount, refer to tables 5, 6 and 7.

i/ WHO reported this amount for "newly Independent States".

j/ For agency breakdown of this amount, refer to table 7.

k/ UNDP reported this amount for government cash counterpart contribution.











Table 9 (continued)

Contributor	United Nations	UNCHS	UNCTAD	UNV	UNESCO	UNIDO	UNRWA	ECA	ECE	ECLAC	ESCAP	ESCWA	FAO	IAEA	ICAO	ILO	IMO	ITC	ITU	UPU	WHO	WIPO	Other <sup>a/</sup>	TOTAL	
International Transport Workers Federation																500.0	512.0							1 012.0	
International Tropical Timber Organisation																		64.8						64.8	
International Union for Forestry Research													85.8											85.8	
International Vaccine Institute (IVI)					32.0																			32.0	
ICM					63.0																			63.0	
India, United States																			15.0					15.0	
Islamic Development Bank, Jeddah						46.3												16.0						62.3	
Japan FAO Association													50.0											50.0	
Japan Radio, Japan																			2.5					2.5	
Landes Nordrhein - Westfalen, Germany																					6.0			6.0	
Mobil, Egypt																			38.0					38.0	
Motorola, United States																			15.0					15.0	
Niedersachsen, Germany																					30.0			30.0	
Nokia UK, Finland																					46.9			46.9	
Noriel, Canada																					15.2			15.2	
North West (UK) Regional Health Authority, United Kingdom																					12.0			12.0	
Oerlikon Aerospace, Canada																					2.5			2.5	
Olcom, Switzerland																								33.3	
Orbicom, United States																								7.0	
Organisation africaine de communication par satellite						4.8																		4.8	
Organisation africaine de la propriété intellectuelle, Yaoundé, Cameroun																							12.3	12.3	
Organization for African Unity																								0.8	
Organization for Economic Co-operation and Development						57.5		39.0																250.3	
Organization of Petroleum Exporting Countries																								2.8	
Pan American Health Organization																								2.8	
Panama, United States																								9.0	
Parimat													305.1											305.1	
Quacom, United States																								15.4	
Region of Hannover, Germany																								6.0	
Regions del Veneto, Italy																								95.2	
Samsung, Japan																								7.9	
Secomat, France																								5.0	
Siemens, Germany																								11.7	
Sivdive, United States																								15.0	
Stockholm County Council, Sweden																								5.0	
Swisscom, Switzerland																								14.0	
Teledec, United States																								15.0	
Thomson, France																								2.5	
Thuraya, United Arab Emirates																								15.0	
Toyota Foundation						49.0																		49.0	
Transnumeric, France																								2.5	
United States Agency for International Development								164.0																164.0	
Welsh Office Health Department, United Kingdom																								6.0	
Wieskey, Switzerland																								102.0	
World Association of Investment Promotion Agencies					57.5																			57.5	
World Association of Nuclear Operators															3.3									3.3	
World Wide Fund for Nature						5.0																		5.0	
Worldlink Information Technology						8.3																		8.3	
Miscellaneous donors <sup>b/</sup>													5 200.9											5 200.9	
Others <sup>c/</sup>																								86.6	
Subtotal (Non-United Nations system)	1 176.9	1 188.4	915.9	206.0	5 167.2	893.8	46 330.8	203.0	732.5		255.0	125.0	16 817.1	80.9	403.0	1 679.0	1 024.0	232.3	541.9		5 631.0	380.2		83 991.6	
TOTAL (MULTILATERAL sources)	2 334.6	2 520.8	1 282.8	763.0	26 831.5	15 240.3	46 643.6	769.0	732.5		2 256.5	2 054.9	125.0	97 280.1	92.1	403.0	2 766.5	1 662.0	522.9	796.1		74 169.7	380.2	37 786.7	321 029.0
GRAND TOTAL (BILATERAL & MULTILATERAL sources)	33 718.9	6 886.1	15 787.9	3 249.0	118 725.4	49 458.3	282 772.9	2 346.0	4 296.6	10 673.6	12 930.7	125.0	223 494.8	4 117.7	1 472.0	83 336.5	9 798.0	14 403.1	1 656.3	846.0	573 557.9	4 182.2	37 786.7	1 595 643.8	

a/ This column shows contributions to agencies not shown in the header of this table. Detailed contributions are enumerated in individual entries footnoted below.

b/ On 1 July 1997, Hong Kong became a Special Administrative Region of China.

c/ The amount under UNCTAD includes the contribution of \$19,561 received from Fondation portuaire Las Palmas.

d/ UNIDO reported this amount with no further breakdown. The amount under ICAO represents \$147,000 for Regional Africa, \$60,000 for Regional Americas and \$519,000 for Regional Asia and the Pacific.

e/ ITU reported this amount under "Others" with no further breakdown. The amount under WHO represents the figures of: - \$150,300 for adjustments to WHO audited figures incurred in 2000;

\$8,021,000 for the Human Reproduction Programme and \$19,115,000 for Trust funds, both for which the detailed breakdown was not made available.

f/ For purposes of brevity, all non-governmental organizations whose respective contributions to the various agencies fall below \$500,000 have been grouped under "Others".

g/ Contributions received by the ITC from the various governments and allocated to UNCTAD for the Joint Integrated Cooperation Programme (JITAP) ITC/UNCTAD/WTO.

h/ Further to footnote a/ above, the following contributions by UNCDF to the following agencies have been recorded under the "Other" column: \$7,104,650 (UNOPS); \$23,129,709 (Resident Representatives);

and \$7,552,386 (UNCDF).

i/ WHO reported the amount of \$10,725,000 under Trust funds with no further breakdown.

j/ The amount of \$5,200,900 under FAO was reported for \$2,559,400 for miscellaneous donors and \$2,641,500 for multidonor.

k/ UNRWA reported an amount of \$86,600 with no further breakdown.



Table 10. Extrabudgetary contributions to agencies: unilateral self-supporting sources, 2000  
 (in thousands of United States dollars)

Country or area	United Nations	UNCTAD	UNIDO	UNV	UNESCO	ECA	ECLAC	FAO	IAEA	ICAO	ILO	IMO	ITC	ITU	UPU	WHO	WTO	TOTAL
Algeria			3					180.2										180.5
Argentina			835.6							1 547.0								2 806.4
Australia				123.0	423.8													123.0
Bahamas											110.0							110.0
Bangladesh								539.1	200.0									739.1
Belarus			1.5															1.5
Belgium				266.0														266.0
Bhutan								60.0										60.0
Bolivia	135.8		7		20.0				40.0	1 951.0								2 147.5
Bosnia and Herzegovina									30.9									30.9
Botswana										31.0								31.0
Brazil			(288.7)		81 955.8		432.3	9 369.9	15 620.0	(8.0)	22				2 831.0			109 954.3
Burundi		68.0												4.0				72.0
Cambodia		5.2						198.6			100.0			16.7				320.5
Cameroon											817.0							817.0
Chile			4				312.3					21						428.9
China			106.0										50.0				470.0	628.0
Colombia			195.9		10.0		29.6	24.3			500.0			531.1	50.0			840.9
Congo																		500.0
Cote d'Ivoire			7.1									22						29.1
Cuba								10.0		11.0								21.0
Cyprus																		21.0
Czech Republic												70	52.0					122.0
Democratic People's Republic of Korea										97.0								97.0
Denmark				245.0						24.0	284.0							308.0
Dominica																		245.0
Dominican Republic																		245.0
Ecuador					31.4				5.0	4 780.0								22.0
Egypt			23.6					88.0							4.0			4794.0
Ethiopia										44.0								123.4
Finland										(5.0)								(5.0)
Gabon				1 054.0														1 054.0
Germany			32.6								822.0							884.6
Ghana				5.0														5.0
Greece										780.0				7.1				22.0
Guatemala																		787.1
Guinea										402.0								402.0
Honduras																		38.0
Hungary			(166.1)		343.6									38.0				573.6
India			1 036.2					5 004.9		153.0				230.0				(166.1)
Iran (Islamic Republic of)																		6 194.1
Iraq			21.1					259.5	94.9									375.5
Ireland			12.3															12.3
Israel				140.0														140.0
Italy									50.0									50.0
Japan																		1 159.1
Jordan				3 238.0	17.6										42.0			3 297.6
Kazakhstan									39.7									39.7
Kuwait								254.0										254.0
Kyrgyzstan											13.0							13.0
Latvia																		100.0
Lebanon		54.6							60.0									136.6
Libania		48.3						100.0	(212.0)									(63.7)
Libyan Arab Jamahiriya																		42.0
Luxembourg			(11.1)		2 081.5													2 070.4
											135.0							135.0



Table 10 (continued)

Country or area	UN	UNCTAD	UNIDO	UNV	UNESCO	ECA	ECLAC	FAO	IAEA	ICAO	ILO	IMO	ITC	ITU	UPU	WHO	WTO	TOTAL
Madagascar			8.3															8.3
Malaysia	1.1																	1.1
Mauritania								260.0										260.0
Mauritius			2.8											118.0				120.8
Mexico								1 275.0		20.0		22						1 317.0
Micronesia (Federated States of)	1.2																	1.2
Montserrat											20.0							20.0
Morocco								560.1										560.1
Mozambique		74.6						1 420.4										1 494.9
Namibia								553.3		(17.0)								536.3
Nepal		510.0																510.0
Netherlands				524.0														524.0
Nicaragua		110.0						530.3										640.3
Nigeria										1 088.0		132						1 220.0
Oman	1.7		2.3							455.0								459.0
Pakistan										19.0	1.0	13						33.0
Panama			6							441.0	292.0							733.6
Papua New Guinea											87.0							87.0
Paraguay			1.2				25.7	315.1										342.0
Peru			(72.7)							3 229.0					48.8			3 205.1
Philippines								650.0	9.9	483.0		22						1 164.9
Poland			228.4															228.4
Republic of Korea				400.0											111.0			511.0
Russian Federation			363.2									21						384.2
Saudi Arabia			11.9		553.5			4 356.5		5 349.0								10 270.9
Singapore										109.0								109.0
Slovakia			81.9						219.1									301.0
Slovenia			7.1															7.1
Somalia										(1 068.0)								(1 068.0)
Spain				746.0				31.3										777.3
Sri Lanka										(4.0)								(4.0)
Suriname														10.5				10.5
Sweden				351.0														351.0
Switzerland				(73.0)														(73.0)
Syrian Arab Republic								97.0		901.0								998.0
Thailand			1.8							29.0								30.8
Trinidad and Tobago												32						32.0
Tunisia									27.9									27.9
Turkey			8					(7.4)										(6.6)
Uganda										26.0				25.7				51.7
United Arab Emirates										844.0								844.0
United Kingdom				50.0														50.0
United Republic of Tanzania											(7.0)							(7.0)
Uruguay					30.0						(66.0)							(36.0)
Venezuela		929.3			14.0									80.3				1 023.6
Viet Nam										435.0				91.4				526.4
Yemen								311.2										311.2
Yugoslavia									39.0									39.0
Zambia								89.2			238.0							327.2
Zimbabwe		394.5									42.0							436.5
Others a/										437.0						22 926.0		23 363.0
Unspecified b/						80.0												80.0
Grand Total (All countries or area)	4.0	2 330.3	2 445.0	8 181.0	85 623.6	80.0	799.9	26 376.3	831.4	38 247.0	3 380.0	485.0	102.0	1 201.5	3 038.0	22 926.0	470.0	196 520.9

a/ ICAO reported the amount of \$437,000 for Regional Africa.

WHO reported the amount of \$22,926,000 for supply services funds and procurement under the provisions of the Revolving Fund for Teaching and Laboratory Equipment.

b/ ECA reported the amount of \$80,000 under "others" with no further breakdown.

Table 11. WFP, UNICEF and UNFPA: contributions, 1996-2000 a/  
(in thousands of United States dollars)

Country/area/organization/agency	WFP					UNICEF b/					UNFPA				
	1996	1997	1998	1999	2000	1996	1997	1998	1999	2000	1996	1997	1998	1999	2000
(a) Governments b/															
Alghanistan	-	-	-	-	-	-	-	-	-	-	-	-	-	-	-
Algeria	-	-	-	-	-	25.0	-	-	20.0	25.0	-	-	5.1	-	-
Andorra	-	5.0	-	6.0	13.0	5.0	10.0	12.0	62.6	13.3	-	5.0	6.0	-	6.7
Angola	-	-	-	-	-	-	-	-	-	-	-	-	-	-	-
Antigua and Barbuda	-	-	-	-	-	-	-	-	-	-	1.0	-	-	-	1.0
Argentina	-	-	1 000.0	1 000.0	-	341.0	382.0	30.4	47.5	142.0	20.0	-	-	-	-
Armenia	-	-	-	-	-	-	-	-	-	-	-	-	-	-	-
Australia	31 142.3	74 006.3	73 732.8	41 675.1	57 179.1	12 019.0	12 555.0	13 902.4	15 196.1	20 487.4	2 222.2	1 593.8	1 267.7	1 383.8	1 237.0
Austria	4 275.5	6 229.6	3 639.0	3 675.8	1 836.6	3 479.0	2 295.0	2 796.5	1 797.6	1 424.0	700.0	546.0	571.3	418.3	268.0
Azerbaijan	-	-	-	-	-	-	-	-	-	-	-	-	-	-	-
Bahamas	-	-	-	-	-	-	-	-	-	1.0	-	-	-	-	-
Bangladesh	-	1 062.5	1 062.5	-	-	30.0	30.0	35.0	32.0	445.0	25.0	-	-	-	-
Barbados	-	-	6.5	-	-	-	6.0	4.0	8.1	4.0	3.5	3.5	3.5	3.5	-
Belarus	-	-	-	-	-	-	-	-	-	5.0	-	-	-	-	-
Belgium	23 880.7	17 743.5	16 167.7	9 985.0	5 311.7	4 249.0	3 586.0	4 155.4	3 787.2	6 812.2	2 469.7	1 921.7	1 752.0	1 747.5	2 918.0
Belize	-	-	-	-	-	10.0	-	-	50.5	37.9	-	-	-	-	-
Benin	2.0	4.0	-	-	-	4.0	7.0	3.5	4.0	-	2.5	2.5	-	-	-
Bhutan	-	-	2.1	-	-	7.0	-	20.0	-	21.0	2.8	2.8	4.4	-	4.2
Bolivia	-	-	232.8	-	232.8	47.0	486.0	764.0	692.0	932.2	-	-	4.0	4.0	-
Botswana	100.1	-	-	-	-	-	11.0	5.1	-	5.7	-	-	1.5	4.3	4.1
Brazil	-	-	-	-	-	300.0	-	300.0	-	-	-	-	-	-	-
British Virgin Islands	-	-	-	-	-	-	19.0	-	38.4	-	-	-	0.5	-	-
Brunei Darussalam	-	-	-	50.0	-	-	-	-	-	-	-	-	-	-	-
Bulgaria	-	-	-	-	-	-	-	0.1	-	-	-	-	-	-	-
Burkina Faso	-	-	-	-	-	-	5.0	5.2	0.1	7.2	-	1.6	8.1	-	1.3
Burundi	-	-	-	-	-	-	3.0	194.8	49.8	1.3	-	-	-	1.8	1.4
Cambodia	-	-	-	-	-	-	-	-	-	-	-	-	-	-	-
Cameroon	-	-	-	-	206.2	-	-	-	-	-	-	-	-	-	92.3
Canada	62 719.7	96 339.3	54 869.6	72 512.2	44 736.9	28 798.0	22 346.0	23 660.5	40 773.2	19 983.8	7 016.4	6 487.5	6 453.9	6 026.5	6 148.6
Cape Verde	-	-	-	-	-	-	-	-	-	-	-	-	-	-	-
Central African Republic	-	-	-	-	-	-	200.0	-	60.2	-	-	-	-	-	-
Chad	-	-	-	-	-	140.0	500.0	342.2	2 032.0	15.2	-	-	-	-	-
Chile	5.0	100.0	-	-	-	76.0	76.0	77.0	77.0	77.0	5.0	5.0	6.0	-	1
China	1 163.4	1 167.3	42.3	2 326.1	42.3	1 112.0	1 100.0	1 160.4	1 160.5	1 209.6	400.0	400.0	820.0	820.0	820.0
Colombia	385.4	15.0	15.6	(234.4)	14.5	450.0	481.0	450.0	450.0	467.1	40.0	40.1	39.9	43.0	-
Congo	200.0	-	-	-	-	-	-	-	-	-	4.0	-	-	-	-
Cook Islands	-	-	-	-	-	-	-	-	-	-	4.4	-	-	-	-
Costa Rica	8.5	8.9	-	-	-	27.0	-	12.6	-	-	-	4.3	-	-	-
Côte d'Ivoire	-	-	-	-	-	-	-	5.0	5.0	123.7	-	-	-	-	-
Croatia	-	-	-	1 172.0	-	-	-	-	-	-	-	-	-	-	-
Cuba	905.0	461.8	680.8	45.0	542.4	25.0	30.0	110.0	-	50.0	-	-	-	-	-
Cyprus	-	12.9	-	-	9.6	-	1.0	-	-	1.3	-	-	-	-	1.5
Czech Republic	-	-	20.0	569.5	-	149.0	117.0	120.8	148.4	182.4	58.5	61.0	-	58.1	51.0
Democratic People's Republic of Korea	-	-	-	-	-	10.0	-	11.7	0.1	30.2	9.7	-	-	-	9.4
Denmark	57 239.7	43 797.0	39 183.3	45 063.8	38 083.3	32 777.0	36 099.0	37 688.9	33 005.4	29 105.6	47 008.5	33 842.4	33 299.8	27 870.5	23 884.9
Djibouti	-	-	-	-	-	1.0	2.0	1.0	1.0	-	1.0	-	-	-	-
Dominican Republic	-	-	-	179.4	-	-	11.0	67.4	-	-	-	-	-	-	-
Ecuador	87.2	30.9	-	-	-	-	-	-	-	-	-	-	-	-	2.1
Egypt	-	371.8	369.4	158.1	82.7	39.0	39.0	38.3	152.2	140.7	103.9	-	103.2	-	100.0
El Salvador	-	469.9	(18.0)	149.6	149.6	50.0	25.0	25.0	-	26.0	-	-	-	-	1.0
Estonia	-	-	-	-	-	-	-	18.6	-	19.3	-	-	-	-	-
Ethiopia	-	-	-	-	-	50.0	49.0	49.3	49.3	36.9	4.7	4.5	4.3	3.8	3.7
Fiji	-	-	-	-	-	3.0	-	2.5	2.5	2.3	3.6	-	-	-	-
Finland	13 788.6	15 924.4	12 059.1	14 043.8	14 118.0	15 325.0	14 756.0	14 290.1	13 720.7	13 133.7	13 920.7	14 538.6	14 151.2	12 575.9	12 490.3
France	22 487.1	11 613.5	10 715.5	28 970.7	16 492.4	9 674.0	8 667.0	10 120.0	7 626.2	7 518.1	782.8	901.1	1 005.0	1 130.5	1 160.4

Table 11 (continued)

Country/area/organization/agency	WFP					UNICEF b/					UNFPA				
	1996	1997	1998	1999	2000	1996	1997	1998	1999	2000	1996	1997	1998	1999	2000
Gabon	-	-	-	-	-	198.0	-	165.6	154.0	-	79.7	-	-	-	88.9
Gambia	-	-	-	-	-	-	5.0	-	-	4.7	-	-	-	-	-
Georgia	-	-	-	-	-	-	-	-	-	-	-	-	-	-	-
Germany	93 688.6	63 703.7	60 186.9	50 869.9	42 417.1	9 304.0	6 401.0	6 672.4	7 322.5	4 681.0	30 753.1	24 283.0	23 866.9	21 751.7	9 451.1
Ghana	10.0	55.0	-	10.0	-	5.0	5.0	5.0	5.0	5.0	5.0	5.0	-	10.0	-
Greece	-	-	45.0	-	30.0	220.0	210.0	255.0	290.0	260.0	-	-	-	-	-
Guatemala	-	390.9	-	-	-	-	-	31.0	-	-	-	-	-	-	-
Guinea	-	-	-	-	-	-	-	506.2	-	-	-	-	-	-	-
Guinea-Bissau	-	-	-	-	-	3.0	-	-	-	-	-	-	-	-	-
Guyana	63.4	-	27.1	21.2	51.8	1.0	-	-	-	-	-	-	-	-	-
Haiti	-	-	-	-	-	503.0	-	-	-	-	2.0	-	-	-	.8
Holy See	10.0	-	-	-	-	2.0	-	-	-	-	-	-	-	-	-
Honduras	-	5.6	(1.1)	4.9	-	46.0	-	47.2	91.6	24.9	4.9	-	-	4.9	4.8
Hong Kong, China c/	-	-	-	-	-	15.0	16.0	16.9	-	-	-	-	-	-	-
Hungary	58.0	52.0	65.0	73.5	65.0	-	-	-	-	-	-	-	-	-	-
Iceland	7.5	4.3	4.9	5.0	5.0	-	243.0	133.0	131.8	109.0	-	7.0	7.0	6.9	-
India	441.2	297.3	1 760.4	978.3	786.3	-	1 732.0	737.6	718.3	959.7	253.5	249.3	213.0	-	-
Indonesia	194.9	193.1	-	-	-	-	315.0	190.6	-	-	171.4	174.1	145.7	-	25.0
Iran (Islamic Republic of)	-	-	-	-	40.0	88.0	44.0	-	-	100.0	-	-	-	-	-
Ireland	1 064.5	5 850.5	4 362.5	4 884.7	7 176.0	3 342.0	4 070.0	3 758.5	5 009.2	4 948.2	389.6	429.9	421.9	550.2	730.8
Israel	-	10.0	8.0	-	10.0	110.0	15.0	40.0	77.1	64.0	3.0	4.0	-	-	25.0
Italy	27 484.7	6 744.4	5 002.3	21 447.3	21 680.1	9 159.0	18 286.0	12 860.4	14 922.4	16 911.2	1 655.7	1 123.6	1 432.7	2 971.3	2 901.4
Jamaica	-	50.1	-	-	-	-	-	885.9	-	60.0	0.4	-	-	-	3
Japan	95 750.9	106 030.8	110 577.6	87 869.4	290 664.6	37 800.0	31 030.0	38 747.9	64 778.2	71 922.1	54 420.0	54 420.0	48 920.0	48 285.0	48 285.0
Jordan	88.6	-	46.6	177.3	130.6	14.0	14.0	14.1	-	28.2	48.0	48.0	48.0	48.0	-
Kenya	-	-	-	-	2 142.1	-	-	-	-	-	-	4.6	-	-	4.7
Kuwait	-	-	-	-	-	200.0	200.0	-	200.0	200.0	-	-	-	-	-
Lao People's Democratic Republic	-	-	-	-	-	5.0	5.0	5.0	5.0	5.0	1.0	-	-	-	6
Lebanon	-	3.0	-	-	-	5.0	94.0	76.3	32.5	272.1	5.0	3.0	-	-	2.0
Lesotho	-	-	-	-	-	-	62.0	-	3.8	-	1.0	1.3	-	-	7
Libyan Arab Jamahiriya	-	-	-	-	-	447.0	-	-	-	-	-	-	-	-	-
Liechtenstein	-	-	-	-	-	-	3.0	23.4	50.1	81.6	-	-	-	3.5	5.6
Luxembourg	218.1	(6.7)	294.4	130.6	103.7	653.0	1 645.0	970.3	943.4	492.8	254.7	279.9	368.1	426.2	427.3
Madagascar	-	-	-	1.7	289.0	150.0	1.0	141.4	-	123.0	0.5	-	-	-	-
Malawi	-	-	-	22.4	-	3.0	3.0	1.4	1.3	8	-	-	-	-	-
Malaysia	-	-	-	100.0	5.3	84.0	84.0	84.0	84.0	84.0	15.0	-	15.0	15.0	-
Maldives	-	-	-	-	-	5.0	5.0	5.0	7.5	7.6	2.0	2.0	2.0	2.0	3.0
Mali	-	-	-	-	-	-	-	-	-	-	-	-	-	3.4	-
Malta	7.5	-	27.5	-	-	4.0	4.0	4.1	-	3.3	1.2	1.3	-	-	1.2
Marshall Islands	-	-	-	-	-	-	210.5	-	-	-	-	3.0	-	-	-
Mauritania	-	-	-	-	-	4.0	3.0	245.6	-	-	-	-	-	-	-
Mauritius	7.1	-	-	3.9	-	6.0	12.0	20.3	-	14.3	5.6	5.1	4.3	-	-
Mexico	50.0	120.1	-	-	-	211.0	204.0	206.5	203.3	229.1	45.2	44.7	50.0	50.0	-
Micronesia (Federated States of)	-	-	-	-	-	-	-	-	-	-	-	-	-	-	3.0
Monaco	-	-	-	-	-	18.0	16.0	13.1	14.1	14.0	-	-	-	-	-
Mongolia	-	-	-	-	-	10.0	10.0	10.0	10.0	10.0	4.0	4.0	-	3.9	-
Morocco	-	308.3	5.2	668.7	4.0	87.0	75.0	298.1	-	145.7	6.1	6.1	-	-	-
Mozambique	-	65.0	86.0	64.7	-	-	-	-	21.0	3.0	-	-	-	-	1.0
Myanmar	-	-	-	-	-	-	267.0	6.3	-	9.1	10.2	0.2	-	-	2
Namibia	-	-	-	-	-	4.0	-	-	-	-	2.0	-	1.0	-	-
Nepal	-	153.2	-	101.0	148.5	-	-	10.1	-	-	-	6.1	5.1	-	4.7
Netherlands	81 727.2	47 637.2	41 989.2	61 035.7	62 208.5	78 224.0	54 528.0	44 700.2	52 638.7	50 851.5	44 796.5	44 378.2	39 004.8	42 768.6	50 583.8
New Zealand	537.7	747.0	430.6	524.1	663.5	930.0	2 623.0	1 887.5	1 784.7	1 632.3	672.2	821.6	747.4	683.3	634.1
Nicaragua	-	-	50.0	16.7	-	-	-	26.0	-	7.0	-	-	-	5.0	5.0
Nigeria	-	274.1	-	-	-	-	-	-	214.9	-	-	-	-	-	-
Niue	-	-	-	-	-	-	-	-	-	-	1.1	0.3	0.9	-	-
Norway	40 590.1	34 307.1	35 531.7	42 603.4	26 507.2	55 412.0	62 408.0	71 405.8	59 670.4	53 876.4	28 304.2	28 268.7	27 223.4	25 249.3	22 994.1
Oman	-	-	-	-	-	50.0	50.0	150.0	-	100.0	-	-	-	-	-
Pakistan	-	219.7	72.3	-	494.1	127.0	143.0	-	122.2	104.5	504.5	500.0	45.6	-	-
Palau	-	-	-	-	-	-	-	-	-	-	0.5	1.0	2.0	-	-

Table 11 (continued)

Country/area/organization/agency	WFP					UNICEF <sup>b/</sup>					UNFPA				
	1996	1997	1998	1999	2000	1996	1997	1998	1999	2000	1996	1997	1998	1999	2000
Burkina Faso	1.0	1.0	-	1.0	1.0	25.0	100.0	16.7	33.6	22.7	10.0	10.0	6.7	10.9	9.1
Burkina Faso	-	-	-	-	-	-	-	-	-	5.0	4.5	-	-	-	-
Paraguay	-	-	-	-	-	6.0	34.0	-	-	-	27.0	-	-	-	-
Peru	661.7	-	-	100.0	100.0	997.0	30.0	825.9	92.3	-	-	-	-	-	-
Philippines	24.9	20.0	-	-	-	217.0	205.0	140.5	78.6	82.5	76.3	-	48.9	-	-
Poland	-	-	-	230.0	224.7	48.0	-	-	46.0	46.0	24.0	19.5	23.2	22.6	23.6
Portugal	-	50.0	-	1 800.0	110.0	100.0	125.0	200.0	700.0	720.0	25.0	50.0	40.0	40.0	-
Qatar	-	-	(0.8)	-	10.0	-	-	-	-	-	-	-	-	-	-
Republic of Korea	2 441.3	19 050.0	8 483.2	2 552.9	184.0	1 550.0	2 400.0	1 000.0	1 200.0	1 400.0	500.0	525.0	394.0	260.0	260.0
Romania	-	-	-	-	-	3.0	1.0	1.5	4.7	9.9	1.4	0.7	-	6.4	8.5
Russian Federation	-	-	20.0	-	-	-	500.0	500.0	500.0	500.0	150.0	150.0	-	150.0	150.0
Rwanda	-	-	1.7	-	-	-	-	4.5	-	-	-	-	1.3	-	-
Saint Kitts and Nevis	19.8	-	-	-	-	2.0	-	-	2.7	-	-	-	-	-	5
Saint Lucia	12.4	-	-	-	-	3.0	3.0	-	-	-	0.7	-	-	-	-
Saint Vincent and the Grenadines	-	-	-	-	-	-	-	-	-	2.2	-	-	-	-	-
Samoa	-	-	-	-	-	-	-	-	1.0	-	5.0	5.0	2.5	5.0	10.0
San Marino	-	-	9.0	-	-	-	12.0	22.4	-	19.8	-	-	-	-	-
Sao Tome and Principe	-	-	-	-	-	-	-	-	-	-	1.3	-	-	-	-
Saudi Arabia	5 625.0	4 437.0	-	586.9	1 735.0	2 000.0	1 000.0	1 000.0	1 000.0	1 000.0	30.0	30.0	30.0	30.0	-
Senegal	(78.3)	-	-	-	-	-	-	-	-	27.9	7.6	-	-	-	-
Sierra Leone	-	-	-	-	-	-	-	-	-	-	2.2	-	-	-	8.6
Singapore	-	-	-	9.0	-	20.0	40.0	50.0	50.0	50.0	-	-	-	-	-
Slovakia	-	15.0	25.0	15.0	15.0	-	-	-	-	-	-	-	-	-	-
Slovenia	-	-	76.0	221.4	138.8	1.0	3.0	3.1	1.9	3.7	0.7	0.9	0.9	-	-
South Africa	-	-	-	-	175.7	26.0	41.0	336.0	149.6	505.0	10.0	-	17.9	-	7.9
Spain	13 722.9	3 710.2	11 233.1	2 311.6	1 905.3	2 336.0	1 702.0	1 797.0	2 580.8	1 495.7	475.1	408.5	431.3	438.5	499.0
Sri Lanka	10.8	20.8	144.4	140.5	261.3	860.0	1.0	121.7	15.5	34.1	10.0	-	15.0	15.0	15.0
Sudan	-	-	-	-	-	1.0	61.0	112.6	-	-	-	-	-	-	30.1
Suriname	-	-	-	-	-	-	250.0	-	250.0	-	-	-	-	-	-
Swaziland	45.0	-	-	-	-	2.0	-	1.4	-	-	-	-	-	-	-
Sweden	25 122.4	35 215.0	16 216.8	30 529.8	39 238.9	91 700.0	71 130.0	75 066.0	69 684.3	55 941.4	17 458.7	15 178.6	16 053.9	16 710.5	18 432.3
Switzerland	25 955.6	17 711.9	18 294.1	21 915.5	19 264.2	18 177.0	12 931.0	14 310.2	13 318.9	13 694.5	6 976.7	6 896.6	7 194.2	7 189.5	6 969.7
Syrian Arab Republic	6.5	33.3	38.9	65.2	65.2	24.0	-	-	-	18.5	1.9	1.8	1.8	2.5	2.2
Tajikistan	-	-	-	-	-	-	-	-	-	-	-	-	-	-	-
Thailand	-	-	-	-	-	342.0	259.0	225.7	210.6	214.7	84.0	96.0	95.6	96.0	6.5
The former Yugoslav Republic of Macedonia	-	-	-	-	-	-	-	-	-	5.0	-	-	-	-	-
Togo	-	-	-	-	-	-	-	-	-	3.5	-	-	-	-	-
Tokelau	-	-	-	-	-	-	-	-	-	-	0.4	0.4	1.5	-	-
Trinidad and Tobago	-	-	-	-	-	2.0	2.0	-	1.6	1.6	-	5.0	5.0	-	5.0
Tunisia	82.7	91.8	81.5	-	-	37.0	65.0	94.7	34.8	34.8	-	25.7	24.3	-	23.5
Turkey	-	-	-	-	-	132.0	120.0	130.0	120.0	120.0	-	90.0	108.0	108.0	108.0
Turkmenistan	-	-	-	-	-	-	-	-	-	-	-	-	-	-	5.3
Turks and Caicos	-	-	-	-	-	-	-	-	-	-	-	-	4.8	-	-
Tuvalu	-	-	-	-	-	-	-	-	-	-	2.5	-	-	-	-
Uganda	-	-	-	-	-	-	-	-	-	2.0	-	-	-	-	-
United Arab Emirates	-	-	-	-	-	200.0	-	100.0	100.0	100.0	-	-	-	-	-
United Kingdom	35 680.2	34 044.5	71 179.4	21 304.4	58 114.1	30 246.0	35 352.0	38 557.2	51 124.5	84 085.0	16 495.8	21 487.7	21 850.3	24 040.7	22 290.7
United Republic of Tanzania	-	24.7	-	220.0	4.0	4.0	-	-	-	-	-	-	-	-	4.8
United States	448 046.1	351 473.3	438 059.8	805 485.5	683 371.9	143 234.0	165 097.0	161 530.5	203 765.4	247 599.8	22 750.0	25 000.0	20 000.0	-	21 500.0
Uruguay	-	-	-	-	-	-	30.0	-	30.0	-	25.0	-	25.0	4.0	-
Vanuatu	-	-	-	-	-	-	-	-	-	-	5.0	-	-	-	-
Venezuela	10.6	-	-	-	-	12.0	109.0	47.0	-	-	-	-	9.9	-	-
Viet Nam	18.8	55.6	-	-	18.0	12.0	13.0	12.8	-	13.7	3.4	3.5	3.5	-	-
Virgin Islands (United Kingdom)	-	-	-	-	-	-	-	-	-	-	-	-	-	-	-
West Bank and Gaza	-	1.0	-	-	-	-	-	-	-	-	-	-	-	-	-
Yemen	8.3	-	55.0	-	-	17.0	-	-	16.7	18.4	7.7	-	10.0	10.0	10.0
Zambia	-	-	-	-	-	646.0	205.0	176.3	-	-	-	-	-	-	-
Zimbabwe	182.7	78.5	6	125.0	-	5.0	-	-	-	-	-	-	-	-	5.2
Others	-	-	-	-	-	(6 896.0)	11 560.0	-	(55.7)	(0.2)	-	-	-	-	-
Subtotal (All Governments)	1 117 990.6	1 004 612.9	1 038 290.8	1 380 205.8	1 439 876.6	592 762.0	592 520.5	592 221.5	675 664.5	718 609.4	302 400.6	285 417.0	268 431.7	244 069.5	255 777.7

Table 11 (continued)

Country/area/organization/agency	WFP		UNICEF		UNFPA	
	1996	1997	1996	1997	1996	1997
(b) Private sector - countries/area						
Albania	-	-	-	-	-	-
Algeria	-	-	5.7	-	-	-
Andorra	-	-	13.2	-	-	-
Angola	-	-	(41.7)	-	-	-
Argentina	500.0	-	20.0	1.2	241.6	-
			2 513.3	2 966.5	1 841.9	-
Australia	-	-	-	-	-	-
Austria	-	-	9 676.0	6 594.1	4 729.2	-
Azerbaijan	-	-	833.0	3 321.1	2 005.3	-
Bahrain	-	-	-	236.1	100.0	-
Bangladesh	-	-	-	(20.4)	-	-
			-	140.2	-	-
Barbados	-	-	34.0	-	3.8	-
Belgium	-	-	883.0	4 956.0	7 630.3	-
Benin	-	-	-	4.7	10.6	-
Bhutan	-	-	-	3.7	1.1	-
Bolivia	-	-	-	167.1	252.4	-
Bosnia and Herzegovina	-	-	-	-	-	-
Botswana	-	-	-	44.2	(12.9)	-
Brazil	-	-	-	2.2	-	-
Bulgaria	-	-	-	6 911.7	9 810.9	-
Burkina Faso	-	-	180.0	163.5	102.9	-
			-	0.7	11.9	-
Cambodia	-	-	-	-	-	-
Cameroon	-	-	-	(1.8)	2.6	-
Canada	-	-	-	7.7	12.0	-
Cape Verde	-	-	8 105.0	7 384.6	9 453.5	-
Central African Republic	-	-	-	(0.8)	14.1	-
			-	20.1	15.9	-
Chad	-	-	-	(2.2)	3.5	-
Chile	-	-	-	176.3	188.4	-
China	-	-	-	268.0	536.9	-
Colombia	-	-	-	1 535.2	1 613.8	-
Comoros	-	-	-	0.3	-	-
Congo	-	-	-	-	-	-
Costa Rica	-	-	-	2.3	(2.5)	-
Cote d'Ivoire	-	-	-	139.4	(15.2)	-
Croatia	-	-	-	35.2	33.8	-
Cuba	-	-	-	232.3	229.9	-
			-	136.1	183.4	-
Cyprus	-	-	-	80.4	274.6	-
Czech Republic	-	-	223.0	271.3	310.4	-
Democratic People's Republic of Korea	-	-	-	2 495.2	-	-
Democratic Republic of the Congo	-	-	-	19.6	-	-
Denmark	-	-	227.0	2 164.0	1 623.1	-
			-	2 024.4	1 557.8	-
Djibouti	-	-	-	1.9	2.5	-
Dominican Republic	-	-	-	155.2	142.4	-
Ecuador	-	-	-	484.6	449.3	-
Egypt	-	-	-	(125.8)	147.8	-
El Salvador	-	-	-	23.6	13.3	-
Equatorial Guinea	-	-	-	(2.7)	1.8	-
Eritrea	-	-	-	(4.9)	(0.6)	-
Estonia	-	-	-	58.0	106.3	-
Ethiopia	-	-	-	(20.8)	15.0	-
Fiji	-	-	-	(1.6)	-	-

Table 11 (continued)

Country/area/organization/agency	WFP		UNICEF		UN FPA	
	1996	1997	1998	1999	2000	2000
Finland	-	-	4 133.0	2 218.2	3 055.3	3 569.9
France	-	-	3 196.0	3 061.1	40 777.1	31 965.8
Gabon	-	-	-	(4.7)	-	1
Gambia	-	-	-	3.0	2.1	5
Georgia	-	-	-	0.2	-	-
Germany	-	-	56 025.0	47 361.8	74 218.2	64 984.0
Ghana	-	-	-	185.5	8.6	32.1
Gibraltar	-	-	-	11.9	16.0	14.8
Greece	-	-	3 410.0	4 263.8	4 510.2	4 343.0
Guatemala	-	-	-	18.9	10.0	-
Guinea	-	-	-	11.7	-	-
Guinea-Bissau	-	-	-	(5.0)	-	-
Guyana	-	-	-	20.5	-	-
Haiti	-	-	-	8.7	(6.4)	-
Honduras	-	-	-	36.6	(28.9)	8.6
Hong Kong, China	-	-	6 573.4	5 191.9	5 413.9	5 413.9
Hungary	-	-	296.0	304.5	159.9	293.9
Iceland	-	-	20.0	13.8	22.2	24.5
India	-	-	-	1 415.8	125.3	48.0
Indonesia	-	-	-	176.9	440.3	803.9
Iran (Islamic Republic of)	-	-	-	714.9	414.2	128.0
Iraq	-	-	-	5.9	2.3	-
Ireland	-	-	486.0	855.0	1 714.7	1 201.2
Israel	-	-	38.0	(387.5)	29.4	34.7
Italy	-	670.8	23 423.0	22 062.3	26 933.1	23 560.1
Jamaica	-	-	-	45.1	(20.8)	6.9
Japan	-	109.2	41.6	76 981.3	74 362.1	74 139.0
Jordan	-	-	-	(15.7)	53.5	-
Kenya	-	-	-	(143.0)	56.4	60.6
Kuwait	-	-	-	(2.2)	14.1	-
Lao People's Democratic Republic	-	-	-	0.2	5.2	9
Latvia	-	-	-	25.9	5.5	33.5
Lebanon	-	-	15.0	243.7	332.6	41.1
Lesotho	-	-	-	0.7	2.3	-
Libyan Arab Jamahiriya	-	-	-	(101.9)	402.7	-
Liechtenstein	-	-	-	170.3	79.6	-
Lithuania	-	-	79.0	90.2	(10.4)	73.7
Luxembourg	-	-	214.0	1 173.0	1 519.5	1 119.9
Madagascar	-	-	-	23.6	18.0	16.6
Malawi	-	-	-	(6.1)	-	-
Malaysia	-	-	-	129.4	(19.3)	6.3
Maldives	-	-	-	(4.3)	7.4	-
Mali	-	-	-	4.7	5.8	5.5
Mauritania	-	-	-	(1.4)	24.5	-
Mauritius	-	-	-	80.8	41.6	8.1
Mexico	-	-	-	1 381.1	2 590.7	2 266.2
Moldova	-	-	-	25.8	4.8	-
Morocco	-	-	-	42.2	28.1	107.1
Mongolia	-	-	-	6.9	4	-
Morocco	-	-	-	181.7	225.2	529.9
Mozambique	-	-	-	15.7	1.6	-
Myanmar	-	-	-	5.7	4.4	-
Namibia	-	-	-	(6.4)	10.2	(1.6)
Nepal	-	-	-	5.7	10.5	-
Netherlands	-	-	15 515.0	30 361.0	41 069.9	36 081.8

Table 11 (continued)

Country/area/organization/agency	WFP			UNICEF			UNFPA			
	1996	1997	1998	1999	2000	1996	1997	1998	1999	2000
New Zealand	-	-	-	-	202.0	256.0	308.3	(18.0)	122.6	-
Nicaragua	-	-	-	-	-	-	8.0	-	-	-
Niger	-	-	-	-	-	-	2.0	-	-	-
Nigeria	-	-	-	-	-	-	83.1	422.9	523.2	-
Norway	-	-	-	-	71.0	2 114.0	1 208.2	1 208.5	1 082.7	-
Oman	-	-	-	-	-	-	13.1	21.0	4.8	-
Pakistan	-	-	-	-	-	-	116.8	210.1	(10.8)	-
Panama	-	-	-	-	-	-	52.7	133.2	9.8	-
Papua New Guinea	-	-	-	-	-	-	1.4	-	-	-
Paraguay	-	-	-	-	-	-	67.0	51.8	52.5	-
Peru	-	-	-	-	-	-	640.7	503.6	556.3	-
Philippines	-	-	-	-	-	-	1 505.2	799.7	612.5	-
Poland	-	-	-	-	-	631.0	529.0	290.6	241.5	-
Portugal	-	-	-	-	162.0	2 380.0	3 315.8	2 315.2	3 535.6	-
Qatar	-	-	-	-	-	-	2.9	(0.4)	250.0	-
Republic of Korea	-	-	-	-	800.0	3 776.0	243.1	2 681.9	3 780.1	-
Romania	-	-	-	-	-	201.0	-	18.1	-	-
Russian Federation	-	-	-	-	-	-	0.2	-	-	-
Rwanda	-	-	-	-	-	-	(0.1)	5.0	-	-
San Marino	-	-	-	-	81.0	30.0	82.3	(3.3)	72.6	-
Sao Tome	-	-	-	-	-	-	2.3	1.7	-	-
Saudi Arabia	-	-	-	-	-	-	809.5	189.9	340.4	-
Senegal	-	-	-	-	-	-	130.4	150.1	(51.0)	-
Serbia	-	-	-	-	-	-	173.3	-	365.6	-
Sierra Leone	-	-	-	-	-	-	-	0.7	-	-
Singapore	-	-	-	-	-	-	296.3	338.0	69.0	-
Slovakia	-	-	-	-	-	237.0	310.2	222.4	248.5	-
Slovenia	-	-	-	-	-	863.0	1 296.2	1 307.3	1 401.1	-
Somalia	-	-	-	-	-	-	0.1	-	-	-
South Africa	-	-	-	-	-	-	21.9	(0.8)	21.0	-
Spain	-	-	-	-	14 428.0	27 460.0	22 580.8	21 598.2	22 782.5	-
Sri Lanka	-	-	-	-	-	-	7.2	19.2	9.0	-
Sudan	-	-	-	-	-	-	20.9	6.9	-	-
Sweden	-	-	-	-	41.0	2 492.0	2 051.2	2 106.3	3 798.2	-
Switzerland	-	-	-	-	4 530.0	12 100.0	16 120.1	11 330.8	11 675.3	-
Syrian Arab Republic	-	-	-	-	-	-	1.9	48.2	-	-
Thailand	-	-	-	-	-	-	1 463.8	1 652.8	1 902.6	-
The former Yugoslav Republic of Macedonia	-	-	-	-	-	-	46.4	14.0	3.7	-
Togo	-	-	-	-	-	-	(14.6)	1.3	-	-
Trinidad and Tobago	-	-	-	-	-	-	17.8	(1.3)	12.8	-
Tunisia	-	-	-	-	-	-	170.8	192.6	117.0	-
Turkey	-	-	-	-	97.0	1 038.0	971.3	438.5	717.6	-
Uganda	-	-	-	-	-	-	6.4	23.7	-	-
United Kingdom	-	-	-	-	5 472.0	9 644.0	15 342.0	22 264.2	21 834.1	-
United Republic of Tanzania	-	-	-	-	-	-	(7.2)	(7.0)	-	-
United States	-	-	-	-	12 155.0	18 322.0	21 798.9	30 887.8	39 907.7	-
Uruguay	-	-	-	-	-	-	254.6	596.9	192.3	-
Venezuela	-	-	-	-	-	-	522.1	361.3	266.0	-
Viet Nam	-	-	-	-	-	-	12.4	19.5	52.7	-
West Bank and Gaza	-	-	-	-	-	-	(5.1)	0.2	-	-
Yemen	-	-	-	-	-	-	1.5	5.8	2.1	-
Yugoslavia	-	-	-	-	-	-	-	114.0	-	-
Zambia	-	-	-	-	-	-	10.9	(18.3)	(0.7)	-
Zimbabwe	-	-	-	-	-	-	13.5	3.2	3.1	-
Others	183.3	657.0	450.0	20 185.4	13 942.4	-	227.0	992.0	572.6	-
Subtotal (Private sector - all countries/area)	183.3	1 437.0	861.9	21 303.1	14 118.5	113 099.0	302 705.0	373 511.0	433 363.0	398 231.4



Table 11 (continued)

Country/area/organization/agency	1966	1967	WFP 1998	1989	2000	1996	1997	UNICEF 1998	UNICEF 1999	2000	1996	1997	UNFPA 1996	1999	2000	
(c) Private sector -																
Non-governmental organizations and others																
Andoran National Committee for UNICEF	-	-	-	-	-	53.0	114.0	-	-	-	-	-	-	-	-	-
Association mondiale des arts	-	-	-	-	-	-	-	-	81.9	166.3	-	-	-	-	-	-
Audrey Hepburn Tribute	-	-	-	-	-	17.0	-	-	-	-	-	-	-	-	-	-
Bernard Van Leer Fund	-	-	-	-	-	93.0	60.0	100.2	100.7	-	-	-	-	-	-	-
Canada	2 278.9	3 017.6	41.3	117.7	671.1	-	-	-	-	-	-	-	-	-	-	-
Canadian Public Health	-	-	-	-	-	75.0	-	-	-	11.8	-	-	-	-	-	0.2
Central America	-	-	-	-	-	-	-	-	-	-	-	-	-	-	-	-
Chile	-	-	-	-	-	-	-	-	-	-	-	-	-	-	-	-
Church World Service	-	-	-	-	-	-	200.0	-	-	418.5	-	-	-	-	-	-
Columbia University	-	-	-	-	-	-	-	-	1 042.0	4 653.8	-	-	-	-	-	-
Dr. John M. Ely	-	-	-	-	-	-	-	-	-	-	-	-	-	-	-	-
Finland	-	-	-	-	-	-	-	-	-	-	-	-	-	-	-	-
France	-	-	-	-	-	-	-	-	-	-	-	-	-	-	-	-
Gates Foundation	-	-	-	-	-	-	-	-	1 444.8	1 492.2	-	-	-	-	-	-
GAVI Global Fund for Children's Vaccines	-	-	-	-	-	-	-	-	-	1 001.5	-	-	-	-	-	-
GCD (UNICEF Greeting Card Operations)	-	-	-	-	-	150 421.0	-	-	-	-	-	-	-	-	-	-
Germany	42.7	78.8	-	-	-	-	-	-	-	-	-	-	-	-	-	-
Imago, Roy Bell	-	-	-	-	-	-	-	-	-	-	-	-	-	-	-	-
International Child Development Center	-	-	-	-	-	-	10.0	18.7	-	-	-	-	-	-	-	2.7
International Development Research Center	-	-	-	-	-	72.0	3 808.0	723.0	1 381.1	1 254.9	-	-	-	-	-	-
Iran (Islamic Republic of)	-	-	-	-	-	-	-	-	-	-	-	-	-	-	-	-
Italy	-	-	-	-	-	-	-	-	-	-	-	-	-	-	-	-
Japan	-	-	240.8	272.6	208.6	-	-	-	-	-	-	-	-	-	-	-
Kiwanis International	-	-	-	-	-	-	-	-	180.9	-	-	-	-	-	-	-
Kuwait	-	-	-	-	-	-	-	-	-	-	-	-	-	-	-	-
Lebanon	-	-	-	-	-	-	-	-	-	-	-	-	-	-	-	-
Liechtenstein	-	-	-	-	-	-	-	-	-	-	-	-	-	-	-	-
Lions Club	-	-	-	-	-	2.0	-	-	7.1	-	-	-	-	-	-	-
Monaco	-	-	-	-	-	-	-	-	-	-	-	-	-	-	-	-
NetAID Foundation	-	-	-	-	-	-	-	-	-	65.5	-	-	-	-	-	-
Netherlands	-	-	2 950.2	193.2	-	-	-	-	-	-	-	-	-	-	-	-
Nippon Foundation	-	-	-	-	-	2 544.0	1 113.0	-	-	-	-	-	-	-	-	-
Norway	-	-	-	-	-	-	-	-	-	-	-	-	-	-	-	-
OXFAM, Hongkong	-	-	-	-	-	-	197.0	-	-	-	-	-	-	-	-	-
OXFAM, London	-	-	-	-	-	-	82.0	-	-	-	-	-	-	-	-	-
Plan International	-	-	-	-	-	-	80.0	-	-	-	-	-	-	-	-	-
Radda Barnen, Sweden	-	-	-	-	-	32.0	-	33.5	6.5	-	-	-	-	-	-	-
Redd Barna, Norway	-	-	-	-	-	33.0	-	32.7	-	-	-	-	-	-	-	-
Rotary International	-	-	-	-	-	12 760.0	9 252.0	4 510.2	6 981.3	7 881.8	-	-	-	-	-	-
Spain	-	-	-	-	-	-	-	-	-	-	-	-	-	-	-	-
Sweden	-	-	-	-	-	-	-	-	-	-	-	-	-	-	-	-
Switzerland	-	-	-	-	-	-	-	-	-	-	-	-	-	-	-	-
Tetsuko Kurayamagi, Japan	-	-	-	-	-	2 000.0	1 587.0	2 508.5	2 043.6	2 000.4	-	-	-	-	-	-
The Rockefeller Foundation	-	-	-	-	-	20.0	20.0	170.0	25.0	-	-	-	-	-	-	-
United Kingdom of Great Britain and Northern Ireland	-	-	-	-	-	-	-	-	-	-	-	-	-	-	-	-
United Nations Foundation Incorporated	-	-	-	-	-	-	-	-	18 012.3	16 363.7	-	-	-	-	-	-
United States	116.3	365.2	111.3	965.7	577.4	-	-	-	-	-	-	-	-	-	-	-
United States Committee for UNFPA	-	-	-	-	-	-	-	-	-	-	-	-	-	-	-	2 001.2
Wallace Global Fund	-	-	-	-	-	-	-	-	-	-	-	-	-	-	-	50.0
World University Service of Canada	-	-	-	-	-	-	-	-	1 619.2	-	-	-	-	-	-	-
Others	718.9	460.6	743.3	3 228.3	1 318.8	19 011.0	(36 218.0)	-	-	-	-	-	-	-	-	-
Subtotal (Private sector - NGOs and others)	3 156.8	4 161.0	3 985.5	4 767.5	2 775.9	187 133.0	( 19 694.0)	8 096.8	32 906.4	35 310.4	-	-	-	-	-	-
Total (Private sector - countries/area/NGOs & others)	3 340.1	5 598.0	4 867.4	26 070.6	18 894.4	300 232.0	283 011.0	381 607.8	466 269.4	433 541.8	-	-	-	-	-	-



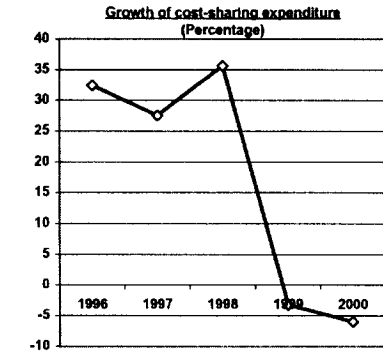
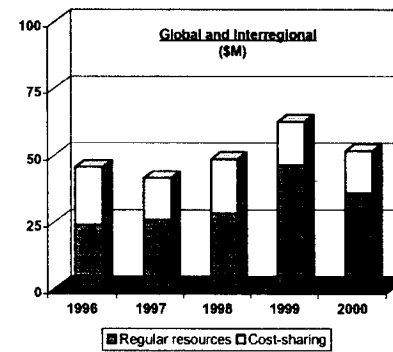
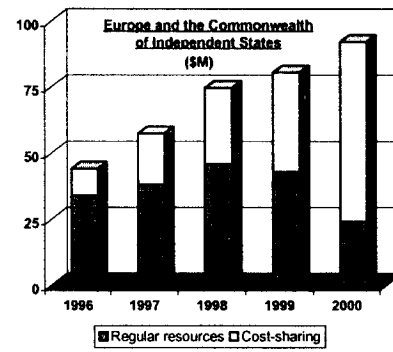
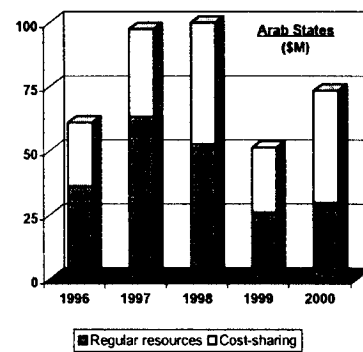
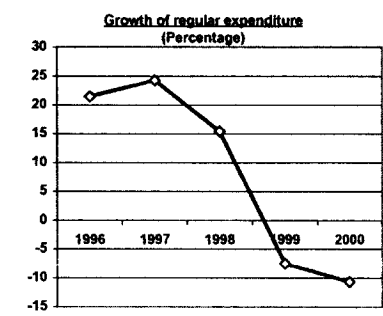
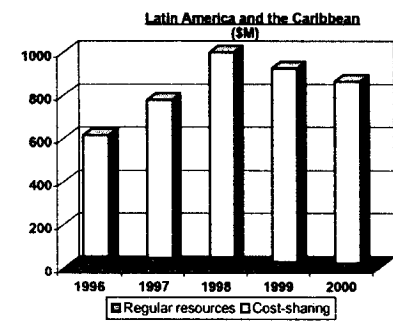
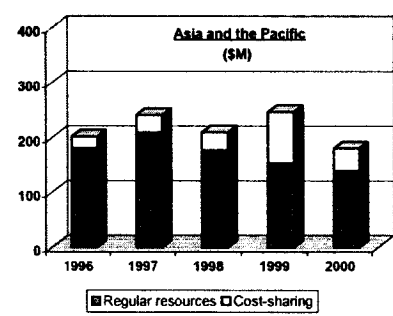
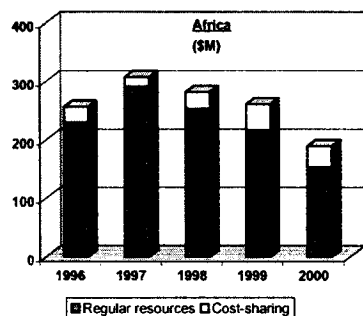
Country/area/organization/agency	WFP					UNICEF <sup>b/</sup>					UNFPA				
	1996	1997	1998	1999	2000	1996	1997	1998	1999	2000	1996	1997	1998	1999	2000
<b>(d) United Nations system</b>															
FAO, Rome	25.4	-	-	-	20.0	-	-	-	-	-	-	-	-	-	-
DHA, New York	1 870.6	12 629.3	13 062.7	19 702.8	3 681.8	1 300.0	11.0	364.7	-	-	-	-	-	-	-
IFAD, Rome	-	-	-	-	75.0	374.0	358.0	235.9	(28.6)	-	-	-	-	-	-
ILO	-	-	-	-	-	-	-	-	-	596.3	-	-	-	-	-
Joint United Nations Programme on HIV/AIDS	-	-	-	-	-	-	-	1 855.4	1 830.3	3 941.5	-	-	-	-	-
OCHA, New York	-	-	-	-	-	-	-	-	156.6	2 068.6	-	-	-	-	-
Office of the Iraq Programme	-	-	-	-	-	-	-	-	622.7	225.2	-	-	-	-	-
United Nations Voluntary Trust Fund for Assistance in Mine Action	-	-	-	-	-	-	-	-	1 076.4	-	-	-	-	-	-
UNCDF, New York	-	-	-	-	-	100.0	-	-	-	-	-	-	-	-	-
UNCHS (Habitat)	-	-	-	-	-	-	-	-	1.3	-	-	-	-	-	-
UNCHS, New York	-	-	-	-	-	-	-	-	-	-	-	-	-	-	-
UNDCP	-	-	-	-	-	-	-	186.2	165.6	179.4	-	-	-	-	-
UNDP, New York	-	-	200.0	29.6	168.9	-	98.0	-	-	300.0	-	-	-	-	-
UNDPKO, New York	-	-	-	-	-	-	-	-	-	968.6	-	-	-	-	-
UNESCO, Paris	(2.3)	35.0	(0.3)	(2.9)	-	10.0	40.0	-	-	-	-	-	-	-	-
UNFPA, New York	-	-	-	40.0	-	(1.0)	-	-	-	-	-	-	-	-	-
UNHCR, Geneva	-	40.9	300.1	860.0	911.9	155.0	120.0	10.7	185.3	558.4	-	-	-	-	-
UNICEF, Australia	-	-	-	-	(3.4)	-	-	-	-	-	-	-	-	-	-
UNICEF, New York	200.0	-	-	-	3.3	-	-	-	-	-	-	-	-	-	-
UNIFEM, New York	-	-	-	-	-	-	-	-	52.5	-	-	-	-	-	-
United Nations agencies	-	-	-	-	-	-	-	20.2	-	96.7	-	-	-	-	-
United Nations agencies staff	-	-	-	-	-	6.0	15.0	11.5	-	5.0	-	-	-	-	-
United Nations Emergency Funds (DHA/Iraq)	-	-	-	-	-	925.0	-	-	-	-	-	-	-	-	-
United Nations European Office	(0.1)	-	-	-	-	-	-	-	-	-	-	-	-	-	-
United Nations Foundation Inc.	-	-	-	-	-	-	-	3 049.0	-	-	-	-	-	-	-
United Nations Human Rights Field Operations	-	-	-	-	-	-	-	-	-	134.7	-	-	-	-	-
United Nations Secretariat	-	-	-	-	-	602.0	2 161.0	530.5	190.7	12 000.0	-	-	-	-	-
United Nations Transitional Authority in Canada	(360.3)	-	-	-	-	-	-	-	-	-	-	-	-	-	-
United Nations Women's Guild	-	-	-	-	-	13.0	5.0	-	-	-	-	-	-	-	-
United States of America	-	-	-	-	-	-	-	-	-	-	-	-	-	-	-
UNOPS	-	-	-	-	-	-	-	-	-	162.8	-	-	-	-	-
WFP	-	-	-	-	-	5.0	-	-	-	40.0	-	-	-	-	-
WHO	-	-	-	-	-	-	134.0	859.0	55.4	210.8	-	-	-	-	-
World Bank	-	-	-	-	-	-	382.0	1 118.5	2 978.7	1 669.3	-	-	-	-	-
Others - United Nations system	-	-	-	-	-	35.0	-	-	-	-	-	-	-	-	-
<b>Subtotal (United Nations system)</b>	<b>1 733.3</b>	<b>12 705.2</b>	<b>13 562.5</b>	<b>20 629.5</b>	<b>4 857.5</b>	<b>3 524.0</b>	<b>3 324.0</b>	<b>8 241.5</b>	<b>7 286.9</b>	<b>23 157.3</b>	-	-	-	-	-
<b>(e) Non-United Nations system</b>															
African Development Bank	-	-	-	-	2 250.0	-	-	-	-	-	-	-	-	-	-
Agence de coopération culturelle et technique	-	-	-	-	-	-	81.0	-	-	48.6	-	-	-	-	-
AGFUND	-	-	-	-	-	-	-	115.0	141.0	50.0	-	-	-	-	-
Council of Europe	-	-	-	-	-	-	-	-	-	122.2	-	-	-	-	-
European Commission Humanitarian Office	-	-	-	-	-	-	-	-	16 355.6	10 132.0	-	-	-	-	-
European Economic Community	178 157.2	190 384.2	138 669.8	146 504.0	98 740.6	12 130.0	18 144.0	16 147.5	-	2 483.7	-	-	-	-	-
European Union	-	-	-	-	-	-	-	-	(141.8)	-	-	-	-	-	-
European Union Trust Fund for Mine Clearance	300.0	-	-	-	-	-	-	-	-	-	-	-	-	-	-
International Committee of the Red Cross	1 164.5	239.5	-	-	238.3	-	-	-	-	-	-	-	-	-	-
International Federation of Red Cross and Red Crescent Societies	-	-	-	(505.9)	-	-	-	-	-	-	-	-	-	-	-
Organization of African Unity	-	-	-	-	-	-	-	360.3	463.8	98.2	-	-	-	-	-
Organization of Petroleum Exporting Countries	-	400.0	195.6	100.0	346.8	150.0	700.0	350.0	225.0	75.0	-	-	-	-	-
Security Council Resolution 986 (Bilateral), Iraq	-	8 253.5	2 185.4	14 409.7	12 999.7	-	-	-	-	-	-	-	-	-	-
Others - Non-United Nations system	-	-	-	-	-	1 848.0	-	-	-	-	-	-	-	-	-
<b>Subtotal (Non-United Nations system)</b>	<b>179 621.7</b>	<b>199 277.2</b>	<b>141 050.8</b>	<b>160 507.8</b>	<b>114 575.4</b>	<b>14 128.0</b>	<b>18 925.0</b>	<b>16 972.9</b>	<b>17 043.6</b>	<b>13 009.7</b>	-	-	-	-	-
<b>GRAND TOTAL</b>	<b>1 302 685.7</b>	<b>1 222 193.3</b>	<b>1 197 771.5</b>	<b>1 587 413.7</b>	<b>1 576 203.9</b>	<b>910 646.0</b>	<b>897 780.5</b>	<b>999 043.7</b>	<b>1 166 264.4</b>	<b>1 188 318.2</b>	<b>302 400.6</b>	<b>285 417.0</b>	<b>268 431.7</b>	<b>244 069.5</b>	<b>257 831.8</b>

a/ Includes both regular and extrabudgetary resources.

b/ UNICEF reported revised figures for 1999. For UNICEF 2000 contributions under "Governments", the amount includes contributions made under Regular resources and Other resources.

**Table 12. UNDP: geographical distribution of expenditure, 1996-2000**  
 (in millions of United States dollars)

Region	1996				1997				1998				1999				2000			
	Amount (\$M)	% Amount	Of which cost-sharing	% cost-sharing	Amount (\$M)	% Amount	Of which cost-sharing	% cost-sharing	Amount (\$M)	% Amount	Of which cost-sharing	% cost-sharing	Amount (\$M)	% Amount	Of which cost-sharing	% cost-sharing	Amount (\$M)	% Amount	Of which cost-sharing	% cost-sharing
Africa	256.5	20.8	26.4	4.0	307.8	20.1	16.4	1.9	281.7	16.0	28.5	2.5	261.2	16.0	44.5	4.0	189.8	13.0	36.2	3.4
Arab States	61.0	5.0	24.8	3.7	97.5	6.4	34.3	4.0	113.3	6.4	60.6	5.3	51.2	3.1	25.2	2.3	73.4	5.1	43.6	4.2
Asia and the Pacific	202.1	16.4	21.4	3.2	241.1	15.8	31.7	3.7	209.5	11.9	32.6	2.8	246.7	15.1	92.6	8.3	180.7	12.4	40.8	3.9
Europe and the Commonwealth of Independent States	44.2	3.6	10.3	1.5	57.4	3.8	19.3	2.3	74.6	4.2	28.7	2.5	80.6	4.9	37.6	3.4	92.2	6.3	68.1	6.5
Latin America and the Caribbean	614.6	49.9	562.5	84.3	777.9	50.9	733.5	86.2	1031.9	58.5	982.9	85.2	926.3	56.8	900.0	80.6	865.7	59.4	844.6	80.5
Global and Interregional	45.6	3.7	21.6	3.2	41.4	2.7	15.8	1.8	48.5	2.8	20.4	1.8	62.5	3.8	16.2	1.5	51.6	3.5	15.8	1.5
GCCC	7.0	6	.0	0.0	5.6	0.4	0.0	0.0	4.1	0.2	0.0	0.0	3.3	0.2	0.0	0.0	4.5	0.3	0.0	0.0
<b>Total</b>	<b>1 231.0</b>	<b>100.0</b>	<b>667.0</b>	<b>100.0</b>	<b>1 528.7</b>	<b>100.0</b>	<b>850.7</b>	<b>100.0</b>	<b>1763.6</b>	<b>100.0</b>	<b>1153.7</b>	<b>100.0</b>	<b>1631.8</b>	<b>100.0</b>	<b>1116.1</b>	<b>100.0</b>	<b>1457.9</b>	<b>100.0</b>	<b>1046.1</b>	<b>100.0</b>
Growth of total (%)	21.4		32.4		24.2		27.5		15.4		35.6		-7.5		-3.3		-10.7		-6.0	

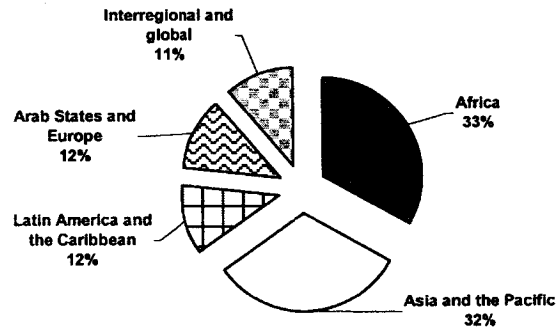


Note: Data refers only to regular expenditure and its associated cost-sharing. Funds and trust funds are excluded from the data.

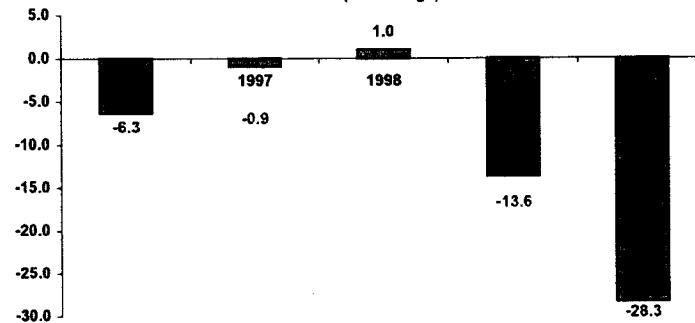
**Table 13. UNFPA: geographical distribution of expenditure, 1996-2000**  
(in millions of United States dollars)

Region	1996		1997		1998		1999		2000		1996-2000
	\$M	%	\$M	%	\$M	%	\$M	%	\$M	%	Average %
Africa	65.7	30.3	74.6	34.8	70.8	32.7	59.6	31.9	47.6	35.5	33.0
Arab States and Europe	26.0	12.0	24.0	11.2	24.4	11.3	21.9	11.7	17.7	13.2	11.9
Asia and the Pacific	74.5	34.4	62.4	29.1	69.9	32.3	63.1	33.7	42.7	31.9	32.3
Latin America and the Caribbean	26.1	12.1	27.4	12.8	24.7	11.4	19.1	10.2	14.8	11.0	11.5
Interregional and Global	24.2	11.2	26.1	12.2	26.8	12.4	23.5	12.6	11.3	8.4	11.3
<b>Total</b>	<b>216.5</b>	<b>100.0</b>	<b>214.5</b>	<b>100.0</b>	<b>216.6</b>	<b>100.0</b>	<b>187.1</b>	<b>100.0</b>	<b>134.1</b>	<b>100.0</b>	<b>100.0</b>
<b>Growth (percentage)</b>	<b>- 6.3</b>		<b>- 0.9</b>		<b>1.0</b>		<b>- 13.6</b>		<b>- 28.3</b>		

**UNFPA: average expenditure by region, 1996-2000**  
(Percentage)



**UNFPA: growth of expenditure, 1996-2000**  
(Percentage)

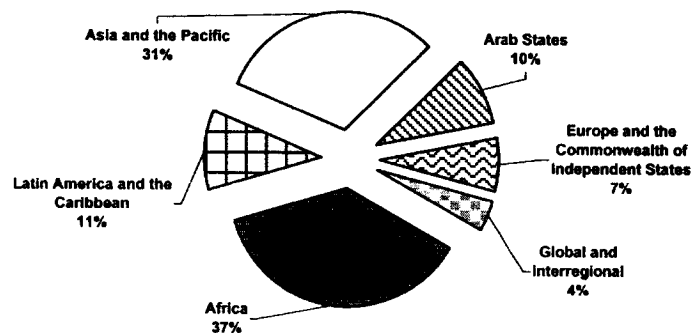


**Table 14. UNICEF: geographical distribution of expenditure, 1996-2000**  
 (in millions of United States dollars)

Region/area	1996		1997		1998		1999		2000		1996-2000
	\$M	%	\$M	%	\$M	%	\$M	%	\$M	%	Average %
Africa	241.2	35.3	258.6	38.4	247.3	38.3	303.2	37.1	333.5	37.7	37.3
Arab States	67.4	9.9	73.1	10.9	70.5	10.9	73.8	9.0	61.4	6.9	9.5
Asia and the Pacific	193.5	28.3	208.2	30.9	203.5	31.6	264.6	32.3	290.4	32.8	31.2
Europe and the Commonwealth of Independent States	46.9	6.9	44.1	6.5	33.9	5.3	75.8	9.3	62.5	7.1	7.0
Latin America and the Caribbean	83.4	12.2	82.3	12.2	73.2	11.4	81.9	10.0	66.3	7.5	10.7
Global and Interregional	51.3	7.5	6.3	0.9	16.5	2.6	18.6	2.3	70.9	8.0	4.3
<b>Total</b>	<b>683.7</b>	<b>100.0</b>	<b>672.6</b>	<b>100.0</b>	<b>644.9</b>	<b>100.0</b>	<b>817.9</b>	<b>100.0</b>	<b>885.0</b>	<b>100.0</b>	<b>100.0</b>
<b>Growth (Percentage)</b>	<b>-14.9</b>		<b>-1.6</b>		<b>-4.1</b>		<b>26.8</b>		<b>8.2</b>		

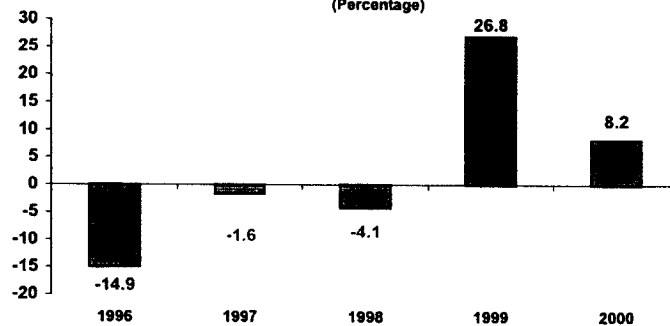
**UNICEF: average expenditure by region/area, 1996-2000**

(Percentage)



**UNICEF: growth of expenditure, 1996-2000**

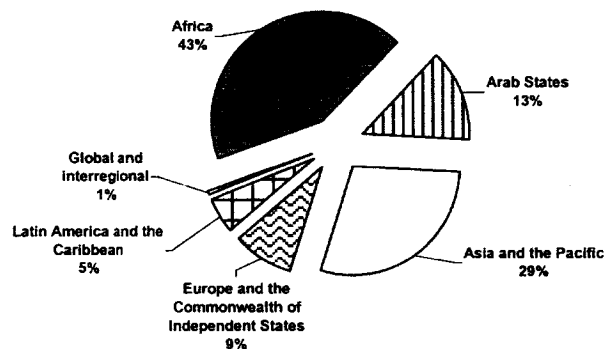
(Percentage)



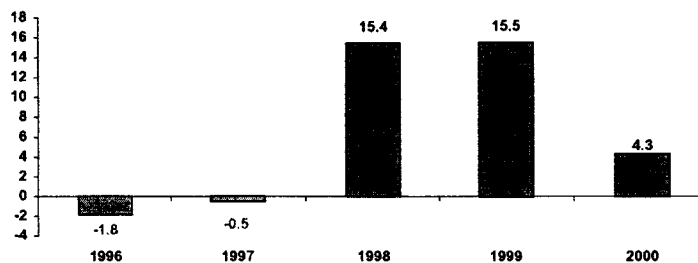
**Table 15. WFP: geographical distribution of expenditure, 1996-2000**  
(in millions of United States dollars)

Region	1996		1997		1998		1999		2000		1996-2000
	\$M	% Total	\$M	% Total	\$M	% Total	\$M	% Total	\$M	% Total	Average %
Africa	539.4	50.1	458.1	42.7	455.9	36.8	482.7	33.8	764.0	51.2	42.9
Arab States	108.5	10.1	122.2	11.4	242.8	19.6	201.9	14.1	176.2	11.8	13.4
Asia and the Pacific	205.2	19.0	359.9	33.6	405.8	32.8	481.3	33.7	392.8	26.4	29.1
Europe and the Commonwealth of Independent States	163.2	15.1	75.9	7.1	56.6	4.6	139.1	9.7	103.0	6.9	8.7
Latin America and the Caribbean	61.1	5.7	52.7	4.9	64.4	5.2	117.8	8.2	45.2	3.0	5.4
Global and Interregional	.4	.0	3.6	.3	11.8	1.0	6.8	.5	9.8	.7	0.5
<b>Total</b>	<b>1 077.8</b>	<b>100.0</b>	<b>1 072.4</b>	<b>100.0</b>	<b>1 237.3</b>	<b>100.0</b>	<b>1 429.6</b>	<b>100.0</b>	<b>1 491.0</b>	<b>100.0</b>	<b>100.0</b>
<b>Growth (Percentage)</b>		<b>-1.8</b>		<b>-0.5</b>		<b>15.4</b>		<b>15.5</b>		<b>4.3</b>	

**WFP: average expenditure by region/area 1996-2000**  
(Percentage)



**WFP: growth of expenditure, 1996-2000**  
(Percentage)



**Table 16. United Nations system: nominal technical cooperation expenditure, 1980-2000 a/**  
 (in millions of United States dollars)

Year	Total agency	Regular budget	Extra-budgetary expenditures	UNFPA	UNICEF	WFP c/	WORLD BANK	IDA	Total WORLD BANK and IDA	UNDP central resources	UNDP-administered funds	Total UNDP	Total United Nations system b/ (1)	Total United Nations system b/ (2)
1980	278.0	40.0	238.0	151.0	247.0	539.0	233.0	131.0	364.0	669.0	34.0	703.0	2 282.0	1 918.0
1981	592.0	213.0	379.0	129.0	213.0	542.0	301.0	216.0	517.0	732.0	70.0	802.0	2 795.0	2 278.0
1982	654.0	242.0	412.0	114.0	205.0	594.0	447.0	284.0	731.0	661.0	61.0	722.0	3 020.0	2 289.0
1983	654.0	257.0	397.0	123.0	246.0	629.0	579.0	294.0	873.0	560.1	64.0	624.1	3 149.1	2 276.1
1984	703.0	281.0	422.0	120.0	244.0	679.0	566.0	279.0	845.0	532.6	81.0	613.6	3 204.6	2 359.6
1985	709.7	297.7	412.0	128.0	279.0	779.0	616.0	332.0	948.0	571.7	77.0	648.7	3 492.4	2 544.4
1986	785.5	310.5	475.0	102.0	326.0	701.0	722.0	341.0	1 063.0	689.2	94.0	783.2	3 760.7	2 697.7
1987	804.4	320.4	484.0	107.0	365.0	791.0	836.0	387.0	1 223.0	700.3	96.0	796.3	4 086.7	2 863.7
1988	762.0	230.0	532.0	130.0	400.0	1 037.0	686.0	412.0	1 098.0	832.6	95.0	927.6	4 354.6	3 256.6
1989	798.2	246.2	552.0	157.0	501.0	952.0	731.0	385.0	1 116.0	903.4	98.0	1 001.4	4 525.6	3 409.6
1990	1 112.1	330.1	782.0	169.0	584.0	956.0	633.0	420.0	1 053.0	1 043.2	98.0	1 141.2	5 015.3	3 962.3
1991	1 106.2	340.2	766.0	172.0	588.0	1 337.9	682.0	415.0	1 097.0	1 133.1	114.0	1 247.1	5 548.2	4 451.2
1992	1 166.4	332.4	834.0	128.0	744.0	1 575.0	748.0	409.0	1 157.0	1 026.8	137.6	1 164.4	5 934.8	4 777.8
1993	1 154.2	345.8	808.4	134.2	803.7	1 487.7	938.0	473.0	1 411.0	1 031.0	173.4	1 204.4	6 195.2	4 784.2
1994	1 240.8	428.8	812.0	201.4	800.6	1 394.1	915.0	562.0	1 477.0	1 036.5	209.8	1 246.3	6 360.2	4 883.2
1995	1 270.3	436.5	833.8	231.0	803.4	1 097.8	1 094.0	648.0	1 742.0	1 014.2	243.2	1 257.4	6 401.9	4 659.9
1996	965.7	383.7	582.0	216.5	683.7	1 077.8	1 160.0	671.0	1 831.0	1 231.0	263.3	1 494.3	6 269.0	4 438.0
1997	1 006.4	402.6	603.8	214.4	672.6	1 072.4	1 401.6	785.6	2 187.2	1 528.7	271.9	1 800.6	6 953.6	4 766.4
1998	1 444.0	426.4	1 017.6	216.6	645.0	1 237.3	421.6	137.5	559.1	1 763.6	367.2	2 130.8	6 232.8	5 673.7
1999	1 525.3	444.0	1 081.3	187.1	817.9	1 429.6	427.2	345.0	772.2	1 631.8	412.3	2 044.1	6 776.2	6 004.0
2000	2 022.9	469.6	1 553.3	134.1	885.0	1 491.0	375.7	305.4	681.1	1 457.9	459.8	1 917.7	7 131.8	6 450.7
TOTAL	20 755.1	6 777.9	13 977.2	3 265.3	11 053.9	21 399.6	14 513.1	8 232.5	22 745.6	20 749.7	3 520.5	24 270.2	103 489.7	80 744.1

a/ The figures in this table have been rounded and may not agree exactly with those of the other tables in this and previous reports.

b/ "Total United Nations system (1)" includes the World Bank and IDA; "Total United Nations system (2)" excludes the World Bank and IDA.

c/ WFP reported revised expenditure figures for 1996, 1997, 1998, 1999.

**Note:** Beginning 1998, the World Bank/IDA does not report technical cooperation expenditure (see "Note on the data" for explanation). This caveat should be borne in mind when using the amounts reported in the column "Total United Nations system (1)" after 1998.

Table 17. United Nations system: growth of nominal technical cooperation expenditure, 1981-2000 a/  
(Percentages)

Year	Total agency	Regular budget	Extra-budgetary expenditures	UNFPA	UNICEF	WFP	WORLD BANK	IDA	Total WORLD BANK and IDA	UNDP central resources	UNDP-administered funds	Total UNDP	Total United Nations system b/ (1)	Total United Nations system b/ (2)
1981	112.9	432.5	59.2	(14.6)	(13.8)	0.6	29.2	64.9	42.0	9.4	105.9	14.1	22.5	18.8
1982	10.5	13.6	8.7	(11.6)	(3.8)	9.6	48.5	31.5	41.4	(9.7)	(12.9)	(10.0)	8.1	0.5
1983	0.0	6.2	(3.6)	7.9	20.0	5.9	29.5	3.5	19.4	(15.3)	4.9	(13.6)	4.3	(0.6)
1984	7.5	9.3	6.3	(2.4)	(0.8)	7.9	(2.2)	(5.1)	(3.2)	(4.9)	26.6	(1.7)	1.8	3.7
1985	1.0	5.9	(2.4)	6.7	14.3	14.7	8.8	19.0	12.2	7.3	(4.9)	5.7	9.0	7.8
1986	10.7	4.3	15.3	(20.3)	16.8	(10.0)	17.2	2.7	12.1	20.6	22.1	20.7	7.7	6.0
1987	2.4	3.2	1.9	4.9	12.0	12.8	15.8	13.5	15.1	1.6	2.1	1.7	8.7	6.2
1988	(5.3)	(28.2)	9.9	21.5	9.6	31.1	(17.9)	6.5	(10.2)	18.9	(1.0)	16.5	6.6	13.7
1989	4.8	7.0	3.8	20.8	25.3	(8.2)	6.6	(6.6)	1.6	8.5	3.2	8.0	3.9	4.7
1990	39.3	34.1	41.7	7.6	16.6	0.4	(13.4)	9.1	(5.6)	15.5	0.0	14.0	10.8	16.2
1991	(0.5)	3.1	(2.0)	1.8	0.7	39.9	7.7	(1.2)	4.2	8.6	16.3	9.3	10.6	12.3
1992	5.4	(2.3)	8.9	(25.6)	26.5	17.7	9.7	(1.4)	5.5	(9.4)	20.7	(6.6)	7.0	7.3
1993	(1.0)	4.0	(3.1)	4.8	8.0	(5.5)	25.4	15.6	22.0	0.4	26.0	3.4	4.4	0.1
1994	7.5	24.0	0.4	50.1	(0.4)	(6.3)	(2.5)	18.8	4.7	0.5	21.0	3.5	2.7	2.1
1995	2.4	1.8	2.7	14.7	0.3	(21.3)	19.6	15.3	17.9	(2.2)	15.9	0.9	0.7	(4.6)
1996	(24.0)	(12.1)	(30.2)	(6.3)	(14.9)	(1.8)	6.0	3.5	5.1	21.4	8.3	18.8	(2.1)	(4.8)
1997	4.2	4.9	3.7	(1.0)	(1.6)	(0.5)	20.8	17.1	19.5	24.2	3.3	20.5	10.9	7.4
1998	43.5	5.9	68.5	1.0	(4.1)	15.4	(69.9)	(82.5)	(74.4)	15.4	35.0	18.3	(10.4)	19.0
1999	5.6	4.1	6.3	(13.6)	26.8	15.5	1.3	150.9	38.1	(7.5)	12.3	(4.1)	8.7	5.8
2000	32.6	5.8	43.7	(28.3)	8.2	4.3	(12.1)	(11.5)	(11.8)	(10.7)	11.5	(6.2)	5.2	7.4

a/ The figures in this table have been rounded and may not agree exactly with those of the other tables in this and previous reports.

b/ "Total United Nations system (1)" includes the World Bank and IDA; "Total United Nations system (2)" excludes the World Bank and IDA.

Note: Beginning 1998, the World Bank/IDA does not report technical cooperation expenditure (see "Note on the data" for explanation). This caveat should be borne in mind when using the amounts reported in the column "Total United Nations system (1)" after 1998.

**Table 18. Executing and specialized agencies: technical cooperation expenditure funded from regular budgets, 1986 - 2000**  
 (in thousands of United States dollars)

Executing Agency	1986	1987	1988	1989	1990	1991	1992	1993	1994	1995	1996	1997	1998	1999	2000	TOTAL 1986-2000
UNITED NATIONS	7 975.0	6 535.0	7 259.0	9 952.0	10 995.0	6 873.0	10 672.0	8 142.0	3 342.0	4 473.0	2 845.0	5 861.0	4 702.0	5 745.0	4 177.2	99 549.2
UNCHS	544.0	523.0	781.0	1 697.0	710.0	483.0	605.0	267.0	365.0	496.0	390.0	493.7	422.5	865.2	422.7	9 065.1
UNCTAD	216.0	714.0	621.0	593.0	1 035.0	757.0	560.0	575.0	544.0	797.0	538.0	430.0	611.0	1 072.0	1 139.0	10 202.0
UNESCO	5 541.0	4 241.0	6 656.0	3 480.0	12 061.0	14 933.0	15 408.0	18 284.0	23 097.0	1 914.0	20 347.1	8 563.0	27 370.1	13 685.0	17 715.6	193 295.8
UNIDO	3 753.0	2 079.0	2 513.0	6 323.0	4 516.0	5 937.0	2 632.0	9 672.0	3 153.0	9 404.0	3 287.0	6 997.0	1 623.0	5 857.0	1 385.0	69 131.0
UNRWA a/	-	-	-	-	-	-	-	-	-	-	-	-	12 000.0	11 841.1	11 298.7	35 139.8
ECA	1 239.0	1 500.0	1 213.0	1 345.0	2 072.0	3 717.0	2 032.0	2 268.0	2 992.0	-	4 031.6	3 361.9	3 007.0	4 995.0	3 739.0	37 512.5
ECE	-	-	-	201.0	138.0	201.0	151.0	294.0	1 014.0	1 979.0	1 411.1	1 163.5	1 398.1	1 407.4	1 227.9	10 586.0
ECLAC	624.0	850.0	681.0	1 249.0	1 125.0	1 458.0	1 240.0	1 401.0	1 892.0	2 282.0	2 020.7	2 080.7	2 731.3	2 300.8	2 255.6	24 191.1
ESCAP	814.0	756.0	1 129.0	1 276.0	1 331.0	1 454.0	1 320.0	1 315.0	-	-	-	-	-	-	-	9 395.0
ESCWA	709.0	985.0	1 105.0	1 243.0	-	-	-	-	-	-	1 183.5	1 470.4	1 642.2	1 805.9	1 926.0	12 070.0
FAO	33 689.0	37 247.0	26 904.0	29 889.0	35 952.0	41 286.0	36 130.0	38 124.0	33 116.0	40 817.0	36 415.9	42 531.6	34 421.1	44 254.2	29 590.9	540 367.7
IAEA	29 592.0	35 460.0	26 810.0	29 249.0	36 695.0	35 801.0	38 634.0	36 720.0	44 548.0	54 480.0	50 704.5	52 754.0	55 625.5	57 843.8	53 982.7	638 899.5
ILO	10 565.0	13 466.0	11 643.0	16 136.0	13 334.0	16 102.0	13 790.0	18 372.0	9 294.0	12 426.0	6 958.0	17 749.0	7 487.0	18 971.0	8 459.0	194 752.0
IMO	737.0	371.0	394.0	554.0	1 158.0	1 296.0	1 527.0	1 319.0	2 079.0	1 844.0	2 056.0	2 150.0	2 267.0	2 184.0	2 504.0	22 440.0
ITU	328.0	817.0	597.0	896.0	956.0	1 573.0	2 487.0	2 960.0	3 399.0	3 101.0	-	2 180.0	4 957.7	8 322.0	10 390.0	42 963.7
UPU	923.0	1 098.0	937.0	943.0	1 160.0	1 654.0	1 093.0	1 394.0	1 377.0	2 036.0	1 519.0	1 964.0	1 900.0	1 640.0	1 374.0	21 012.0
WHO	209 940.0	209 940.0	137 337.0	137 336.0	201 607.0	201 608.0	198 156.0	198 156.0	288 674.0	288 673.0	235 083.5	235 083.5	247 892.5	247 892.5	290 272.0	3 327 651.0
WIPO	2 280.0	2 967.0	2 789.0	3 091.0	4 047.0	3 844.0	5 137.0	5 312.0	8 259.0	10 473.0	13 542.0	17 805.0	16 341.2	13 323.7	27 715.7	136 926.6
WMO	1 011.0	834.0	588.0	796.0	1 222.0	1 243.0	816.0	1 231.0	1 613.0	1 317.0	1 378.0	-	-	-	-	12 049.0
<b>TOTAL</b>	<b>310 480.0</b>	<b>320 383.0</b>	<b>229 957.0</b>	<b>246 249.0</b>	<b>330 114.0</b>	<b>340 220.0</b>	<b>332 390.0</b>	<b>345 806.0</b>	<b>428 758.0</b>	<b>436 512.0</b>	<b>383 710.9</b>	<b>402 638.3</b>	<b>426 399.3</b>	<b>444 006.6</b>	<b>469 575.0</b>	<b>5 447 199.1</b>

a/ The amount under 1998 reflects amended figures as reported by UNRWA in 1999.



**Table 19. Executing and specialized agencies: technical cooperation expenditure funded from extrabudgetary sources, 1986 - 2000**  
(in thousands of United States dollars)

Executing Agency	1986	1987	1988	1989	1990	1991	1992	1993	1994	1995	1996	1997	1998	1999	2000	TOTAL 1986-2000
UNITED NATIONS	12 606.0	13 900.0	19 564.0	14 463.0	15 645.0	18 942.0	20 714.0	22 289.0	19 003.0	21 770.0	23 507.0	22 091.0	18 771.0	21 623.5	24 441.3	289 329.8
UNCHS	1 318.0	906.0	759.0	990.0	1 187.0	4 049.0	5 205.0	3 596.0	4 913.0	7 866.0	8 222.0	20 354.0	43 437.1	45 917.9	60 999.9	209 719.8
UNCTC	641.0	841.0	1 670.0	1 044.0	1 111.0	-	-	-	-	-	-	-	-	-	-	5 307.0
UNCTAD	1 858.0	2 080.0	1 438.0	2 296.0	3 696.0	5 423.0	7 070.0	8 325.0	9 680.0	13 094.0	15 252.0	15 477.0	14 495.0	15 208.0	14 505.0	129 897.0
UNV <sup>a/</sup>	-	-	-	-	-	-	-	-	-	-	-	12 676.1	18 998.0	14 110.8	18 916.2	64 701.1
UNESCO	30 042.0	31 470.0	31 685.0	34 899.0	36 312.0	41 385.0	61 449.0	58 805.0	67 902.0	64 323.0	49 476.1	45 455.0	83 686.0	110 989.0	146 018.0	893 896.1
UNIDO	20 514.0	23 243.0	36 969.0	40 691.0	55 750.0	61 577.0	68 336.0	56 722.0	60 729.0	70 345.0	59 842.0	62 967.0	61 482.0	63 010.0	57 566.0	799 743.0
UNRWA <sup>b/</sup>	-	-	-	-	-	-	-	-	-	-	-	-	256 243.0	273 767.0	287 482.3	817 492.3
ECA	1 926.0	6 271.0	3 238.0	3 387.0	2 612.0	3 155.0	1 753.0	4 805.0	2 492.0	1 298.0	2 262.8	2 121.6	2 374.0	2 950.0	2 346.0	42 991.4
ECE	-	-	-	606.0	1 454.0	1 179.0	1 384.0	2 725.0	3 777.0	2 895.0	3 458.9	3 207.6	3 674.9	4 869.1	4 420.8	33 651.3
ECLAC	4 793.0	5 433.0	5 496.0	4 983.0	4 679.0	6 415.0	7 408.0	6 858.0	5 924.0	6 120.0	7 014.7	6 314.6	7 014.7	5 938.3	8 466.2	92 857.5
ESCAP	6 204.0	6 824.0	7 352.0	7 628.0	8 108.0	8 648.0	8 172.0	10 918.0	11 838.0	11 748.0	14 625.4	13 320.4	11 218.0	9 619.2	10 022.8	146 245.8
ESCWA	77.0	238.0	65.0	139.0	-	-	-	-	-	-	15.7	23.1	5.2	107.6	115.2	785.8
FAO	146 130.0	141 339.0	150 810.0	157 475.0	217 261.0	178 314.0	182 297.0	169 022.0	154 610.0	156 332.0	151 824.2	161 271.9	203 458.4	214 709.3	261 222.3	2 646 076.1
IAEA	7 295.0	7 552.0	7 708.0	9 071.0	9 406.0	8 383.0	7 690.0	7 225.0	7 493.0	7 295.0	7 885.6	7 297.9	6 531.1	5 665.9	4 667.9	111 166.4
ICAO	13 697.0	10 858.0	8 470.0	9 691.0	18 576.0	11 801.0	9 389.0	7 836.0	8 904.0	15 156.0	17 873.0	21 740.0	26 375.0	30 430.0	35 258.0	246 054.0
ILO	40 501.0	40 449.0	38 271.0	46 117.0	53 163.0	57 228.0	61 444.0	57 993.0	58 686.0	60 619.0	60 764.0	53 725.0	56 970.0	54 857.0	64 574.0	805 361.0
IMO	6 639.0	7 225.0	8 048.0	8 228.0	8 487.0	14 814.0	6 363.0	7 183.0	10 096.0	12 390.0	4 857.0	12 016.0	11 371.0	10 253.0	7 779.0	135 749.0
ITC	12 131.0	12 627.0	15 735.0	16 296.0	20 267.0	19 608.0	20 269.0	11 838.0	9 745.0	9 807.0	8 507.0	8 587.0	9 436.1	10 335.7	9 882.3	195 071.1
ITU	4 365.0	4 677.0	8 551.0	5 084.0	4 850.0	5 689.0	4 990.0	5 084.0	4 000.0	3 846.0	-	1 076.0	18 708.0	28 963.5	23 203.6	123 087.1
IUPU	631.0	487.0	383.0	289.0	682.0	878.0	980.0	1 280.0	947.0	1 084.0	1 099.0	1 437.0	7 417.0	1 877.0	1 014.0	20 485.0
WHO	156 998.0	156 998.0	173 248.0	173 248.0	204 960.0	300 620.0	344 483.0	344 486.0	353 613.0	353 615.0	128 819.5	128 819.5	148 726.0	148 726.0	505 877.0	3 623 237.0
WIPO	1 252.0	1 841.0	2 131.0	1 885.0	2 357.0	2 101.0	2 578.0	2 832.0	2 989.0	3 572.0	4 595.0	3 842.0	6 756.1	7 142.0	4 182.2	50 055.2
WMO	5 850.0	9 058.0	9 942.0	13 062.0	15 583.0	15 628.0	12 031.0	18 619.0	14 654.0	10 652.0	12 084.0	-	-	-	-	137 163.0
WTO	-	-	-	-	-	-	-	-	-	-	-	-	457.6	269.4	359.2	1 086.2
AFESD	-	-	-	-	-	-	-	-	-	0.4	-	-	-	-	-	.4
NGOs	-	-	-	-	-	-	-	-	-	0.4	-	-	-	-	-	.4
<b>TOTAL</b>	<b>475 468.0</b>	<b>484 317.0</b>	<b>531 533.0</b>	<b>551 572.0</b>	<b>686 146.0</b>	<b>765 837.0</b>	<b>834 005.0</b>	<b>808 441.0</b>	<b>811 995.0</b>	<b>833 827.8</b>	<b>581 984.9</b>	<b>603 819.8</b>	<b>1 017 605.2</b>	<b>1 081 339.2</b>	<b>1 553 319.1</b>	<b>11 621 210.0</b>

<sup>a/</sup> Prior to 1997, expenditures reported by UNV were combined with those of UNDP.  
<sup>b/</sup> The amount under 1998 reflects amended figures as reported by UNRWA in 1999.

**Table 20. Executing and specialized agencies: extrabudgetary contributions for technical cooperation activities, 1980-2000**  
 (in millions of United States dollars)

Year	Bilateral sources			Multilateral sources			Grand total	
	Country/ territories	NGOs	Unilateral self-supporting sources	Total bilateral	United Nations system	Non-United Nations system		Total multilateral
1980	210.0	7.0	92.0	309.0	107.0	21.0	128.0	437.0
1981	231.0	12.0	108.0	351.0	175.0	8.0	183.0	534.0
1982	231.0	9.0	106.0	346.0	161.0	17.0	178.0	524.0
1983	202.0	12.0	80.0	294.0	127.0	32.0	159.0	453.0
1984	231.0	16.0	122.0	369.0	110.0	21.0	131.0	500.0
1985	193.0	13.0	77.0	283.0	121.0	21.0	142.0	425.0
1986	295.0	12.0	70.0	377.0	134.0	34.0	168.0	545.0
1987	334.0	17.0	69.0	420.0	222.0	25.0	247.0	667.0
1988	450.0	21.0	82.0	553.0	239.0	25.0	264.0	817.0
1989	473.0	22.0	56.0	551.0	264.0	22.0	286.0	837.0
1990	505.0	33.0	69.0	607.0	272.0	47.0	319.0	926.0
1991	582.0	28.0	64.0	674.0	305.0	51.0	356.0	1 030.0
1992	554.0	33.0	78.0	665.0	267.0	41.0	308.0	973.0
1993	601.2	36.3	72.2	709.7	309.0	51.6	360.6	1 070.3
1994	555.5	40.7	72.3	668.5	314.6	61.0	375.6	1 044.1
1995	540.0	61.4	80.9	682.3	387.9	31.5	419.4	1 101.7
1996	508.8	79.1	162.7	750.6	319.3	37.2	356.5	1 107.1
1997	569.2	86.1	91.4	746.7	570.2	33.0	603.2	1 349.9
1998	567.5	124.5	176.8	868.8	369.1	59.0	428.1	1 296.9
1999	875.3	168.1	218.5	1 261.9	139.8	98.9	238.7	1 500.6
2000	1 066.0	208.6	196.5	1 471.1	237.0	84.0	321.0	1 792.1
<b>TOTAL</b>	<b>9 774.6</b>	<b>1 039.7</b>	<b>2 144.2</b>	<b>12 958.6</b>	<b>5 150.9</b>	<b>821.2</b>	<b>5 972.1</b>	<b>18 930.7</b>

**Note:**

Extrabudgetary contributions do not represent total contributions to agencies since contributions to regular budgets, based on assessments, have been excluded.

The figures in this table have been rounded and may not agree exactly with those of the other tables in this and previous reports.

**Table 21. Executing and specialized agencies: growth of extrabudgetary contributions for technical cooperation activities, 1981-2000**  
(Percentages)

Year	Bilateral sources			Multilateral sources			Grand total	
	Country/ territories	NGOs	Unilateral self-supporting sources	Total bilateral	United Nations system	Non-United Nations system		Total multilateral
1981	10.0	71.4	17.4	13.6	63.6	( 61.9)	43.0	22.2
1982	0.0	( 25.0)	( 1.9)	( 1.4)	( 8.0)	112.5	( 2.7)	( 1.9)
1983	( 12.6)	33.3	( 24.5)	( 15.0)	( 21.1)	88.2	( 10.7)	( 13.5)
1984	14.4	33.3	52.5	25.5	( 13.4)	( 34.4)	( 17.6)	10.4
1985	( 16.5)	( 18.8)	( 36.9)	( 23.3)	10.0	0.0	8.4	( 15.0)
1986	52.8	( 7.7)	( 9.1)	33.2	10.7	61.9	18.3	28.2
1987	13.2	41.7	( 1.4)	11.4	65.7	( 26.5)	47.0	22.4
1988	34.7	23.5	18.8	31.7	7.7	0.0	6.9	22.5
1989	5.1	4.8	( 31.7)	( 0.4)	10.5	( 12.0)	8.3	2.4
1990	6.8	50.0	23.2	10.2	3.0	113.6	11.5	10.6
1991	15.2	( 15.2)	( 7.2)	11.0	12.1	8.5	11.6	11.2
1992	( 4.8)	17.9	21.9	( 1.3)	( 12.5)	( 19.6)	( 13.5)	( 5.5)
1993	8.5	10.0	( 7.4)	6.7	15.7	25.9	17.1	10.0
1994	( 7.6)	12.1	0.1	( 5.8)	1.8	18.2	4.2	( 2.4)
1995	( 2.8)	50.9	11.9	2.1	23.3	( 48.4)	11.7	5.5
1996	( 5.8)	28.8	101.1	10.0	( 17.7)	18.1	( 15.0)	0.5
1997	11.9	8.8	( 43.8)	( 0.5)	78.6	( 11.3)	69.2	21.9
1998	( 0.3)	44.5	93.4	16.3	( 35.3)	78.8	( 29.0)	( 3.9)
1999	54.2	35.1	23.6	45.3	( 62.1)	67.5	( 44.3)	15.7
2000	21.8	24.1	( 10.1)	16.6	69.5	( 15.0)	34.5	19.4

Note:

Extrabudgetary contributions do not represent total contributions to agencies since contributions to regular budgets, based on assessments, have been excluded.

The figures in this table have been rounded and may not agree exactly with those of the other tables in this and previous reports.

Table 3. Voluntary contributions received by UNDP, UNEP, UNICEF and WFP, 1983-2000  
(in millions of United States dollars)

Year	UNDP		UNEP		UNICEF		WFP	
	Total	% Change	Total	% Change	Total	% Change	Total	% Change
1983	637.5	-	-	-	-	-	-	-
1984	651.3	(8.7)	-	-	-	-	-	-
1985	658.9	1.2	-	-	-	-	-	-
1986	733.2	10.2	-	-	-	-	-	-
1987	890.7	12.1	-	-	-	-	-	-
1988	931.0	5.7	-	-	-	-	-	-
1989	932.5	0.2	-	-	-	-	-	-
1990	1 001.5	7.4	205.8	-	-	-	870.8	-
1991	948.9	(5.3)	220.7	7.2	-	-	1 107.0	27.1
1992	1 177.9	24.1	233.8	5.9	-	-	1 001.0	(9.6)
1993	890.9	(24.4)	216.7	(7.3)	538.9	-	1 114.8	11.4
1994	928.4	4.2	255.2	17.8	659.3	22.3	1 283.5	15.1
1995	899.8	(3.1)	293.4	15.0	555.3	(0.6)	1 151.2	(10.3)
1996	847.9	(5.8)	302.4	3.1	592.8	(9.5)	1 118.0	(2.9)
1997	760.9	(10.3)	285.4	(5.6)	592.5	(0.1)	1 094.5	(10.1)
1998	745.8	(2.0)	268.4	(6.0)	592.2	(0.1)	1 038.5	3.4
1999	681.4	(8.6)	244.1	(9.1)	675.7	14.1	1 380.2	32.9
2000	634.1	(6.9)	255.8	4.8	718.6	5.3	1 439.9	4.3
TOTAL	15 054.8	-	2 781.7	-	5 025.3	-	12 509.3	-

Note:

Contribution data refer to voluntary contributions from Member States and therefore present only a partial, albeit important, picture of total contributions. In the case of UNDP, the data in the table exclude cost-sharing, funds and trust funds, government cash counterpart contributions, contributions to local office costs, extrabudgetary activities and management services agreements; for UNICEF, data exclude various private sources interorganizational arrangements and miscellaneous; and for WFP, the data exclude contributions from NGOs, the United Nations system and other multilateral donors.